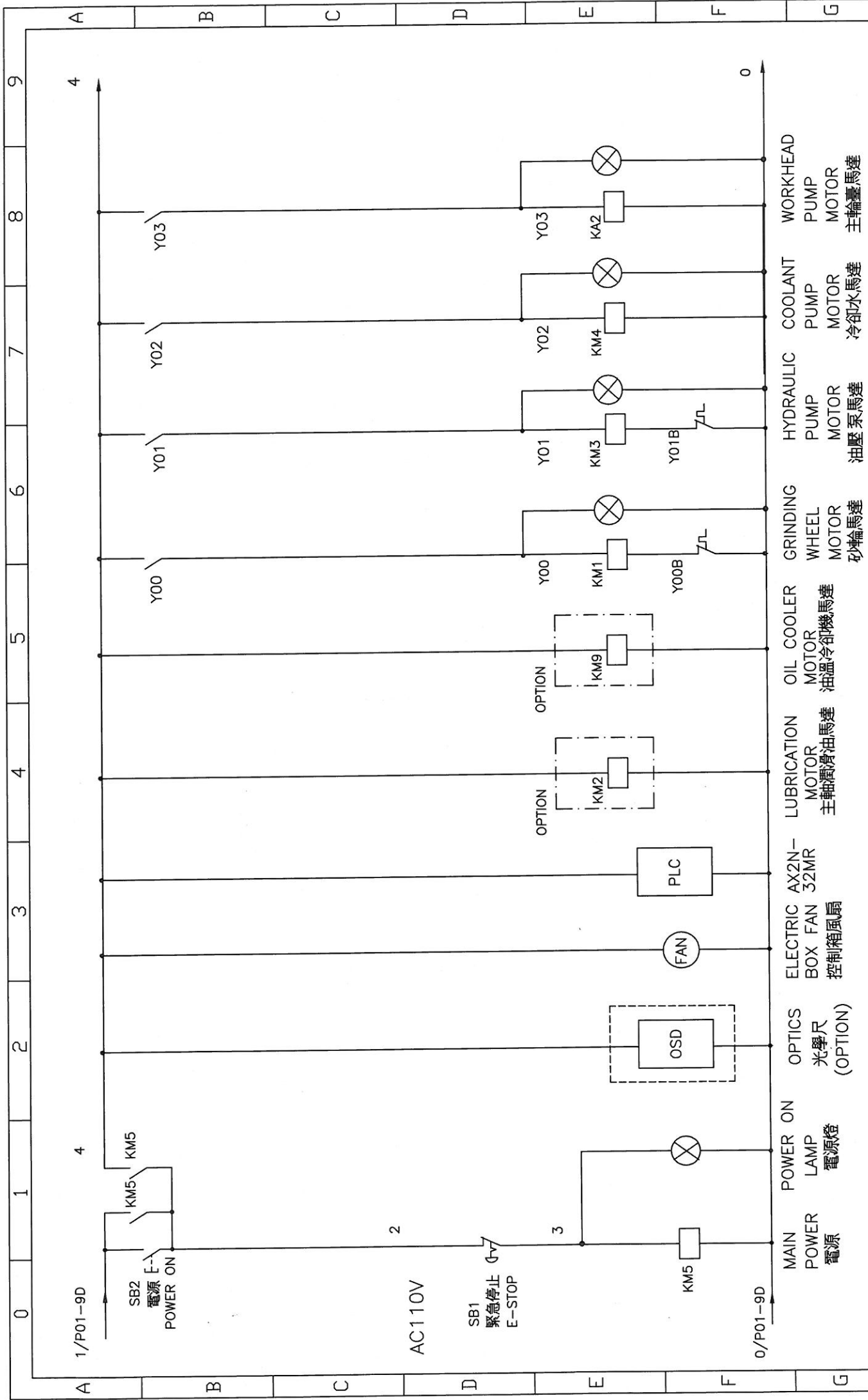
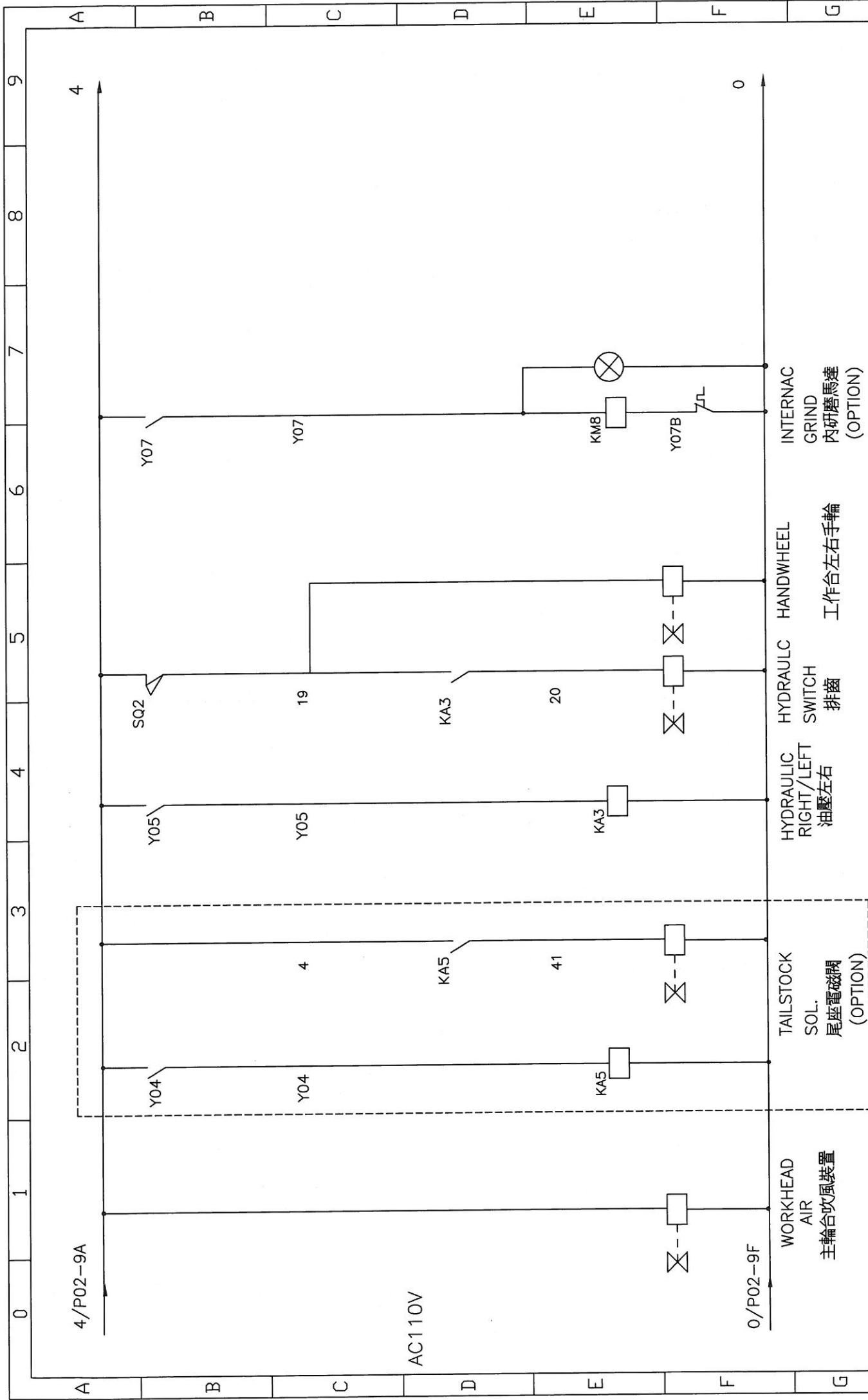


Drawing No.:		01	
MODEL:		OD-SE	
NC Type		AX2N-10GM	
PC ROM			
Title:		MOTOR CONTROL SYSTEM	
<b>SHARP</b>			
d	Modify	17_05_31	Approved
c		SHUN	Checked
b	Edition	G3XP-XXXNC-04	Designed
a		SHUN	Drawn
		08_12_18	SHUN
		08_12_18	SHUN
		08_12_18	SHUN
		08_12_18	SHUN

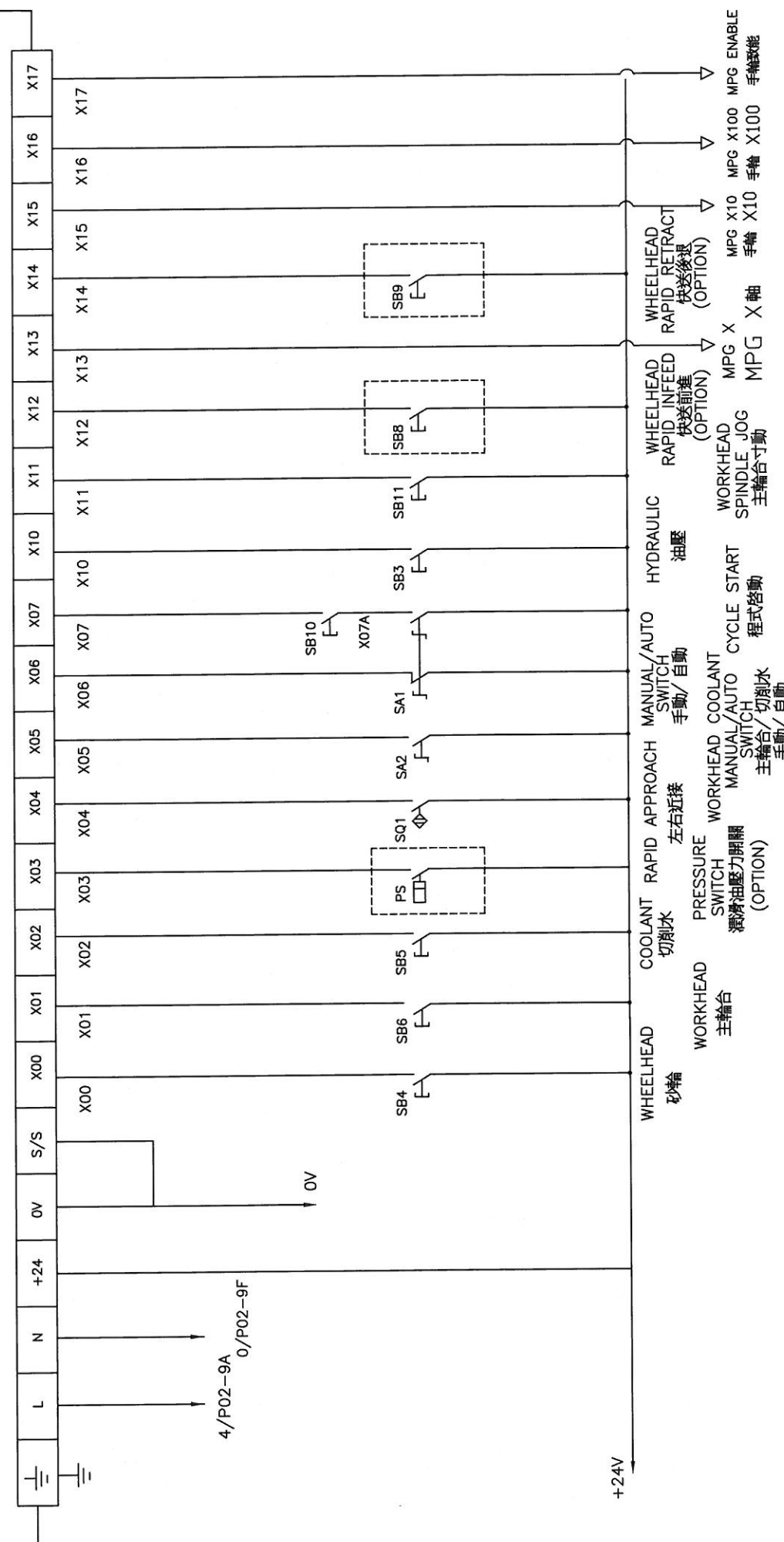


d	Modify	17	05	31	Approved	08	12	18	SHUN	NC Type AX2N-10GM	MODEL: OD-SE	Drawing No.: 02		
c					Checked	08	12	18	SHUN					
b	Edition	G3XP-XXXNC-04			Designed	08	12	18	SHUN				PC ROM	Title: CONTROL CIRCUIT
a					Drawn	08	12	18	SHUN					

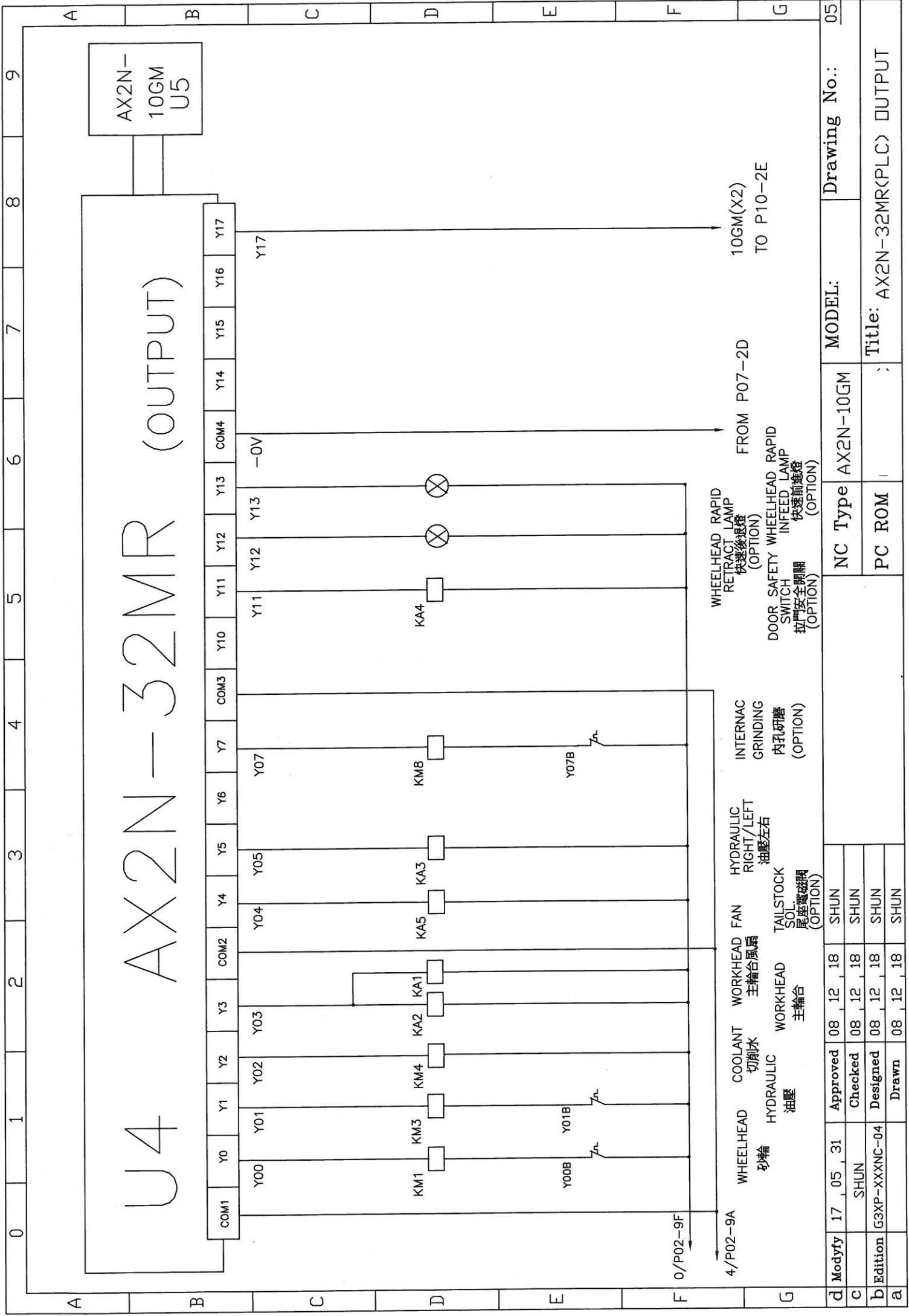


d	Modify	17	05	31	Approved	08	12	18	SHUN	MODEL:	AX2N-10GM	Drawing No.:	03
	c				Checked	08	12	18	SHUN				
b	Edition	G3XP-XXXNC-04			Designed	08	12	18	SHUN	NC Type	PC ROM	Title:	CONTROL CRICUIT
a				Drawn	08	12	18	SHUN					

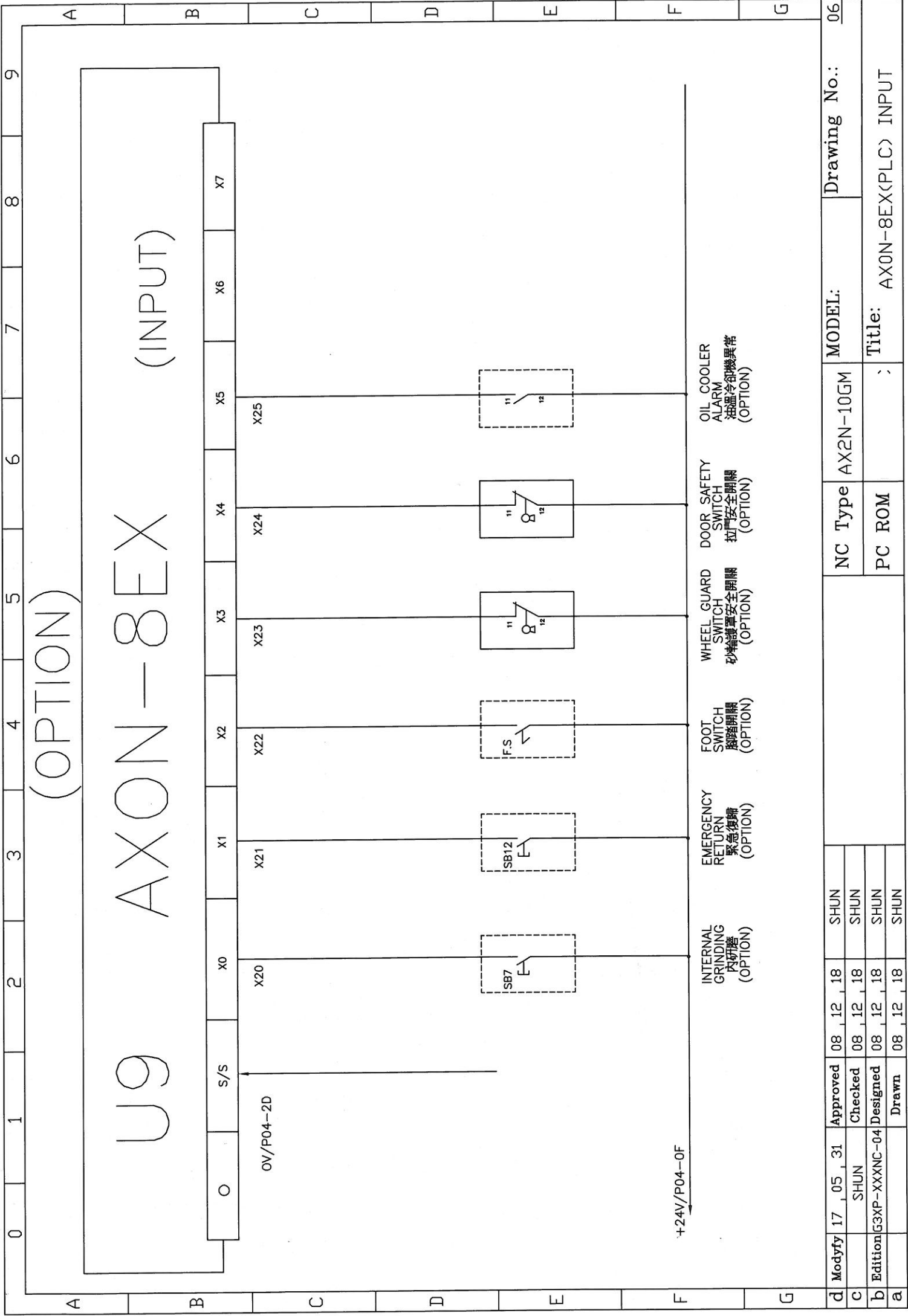
# U4 AX2N-32MR (INPUT)



d	Modyfy	17	05	31	Approved	08	12	18	SHUN	MODEL:	AX2N-10GM	NC Type	AX2N-10GM	Drawing No.:	04
c					Checked	08	12	18	SHUN						
b					Designed	08	12	18	SHUN	MODEL:	AX2N-32MR(PLC)	PC ROM	Title:	AX2N-32MR(PLC) INPUT	
a					Drawn	08	12	18	SHUN						



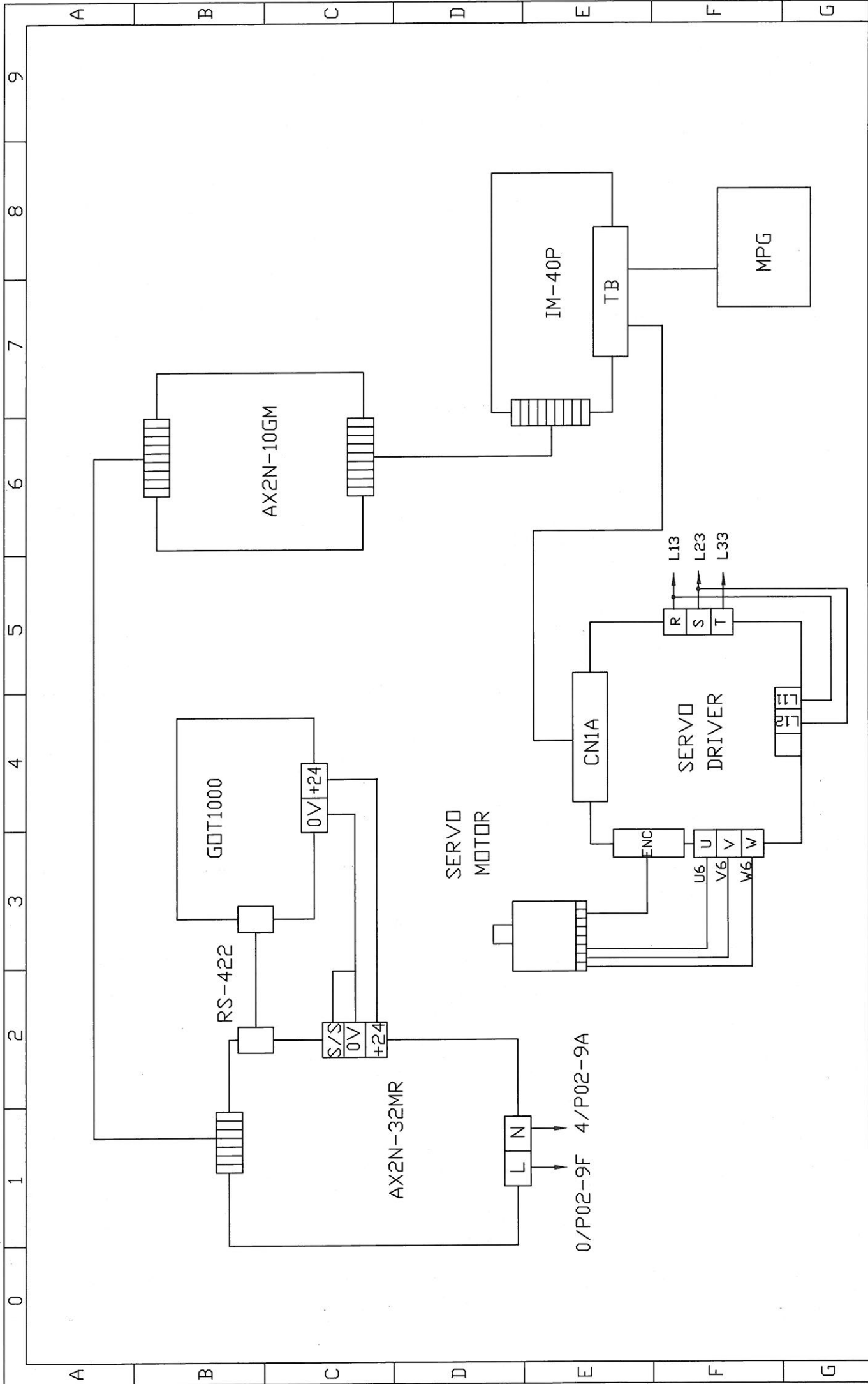
Drawing No.: 05	
MODEL: AX2N-10GM	NC Type
PC ROM	PC ROM
Title: AX2N-32MR(PLC) OUTPUT	



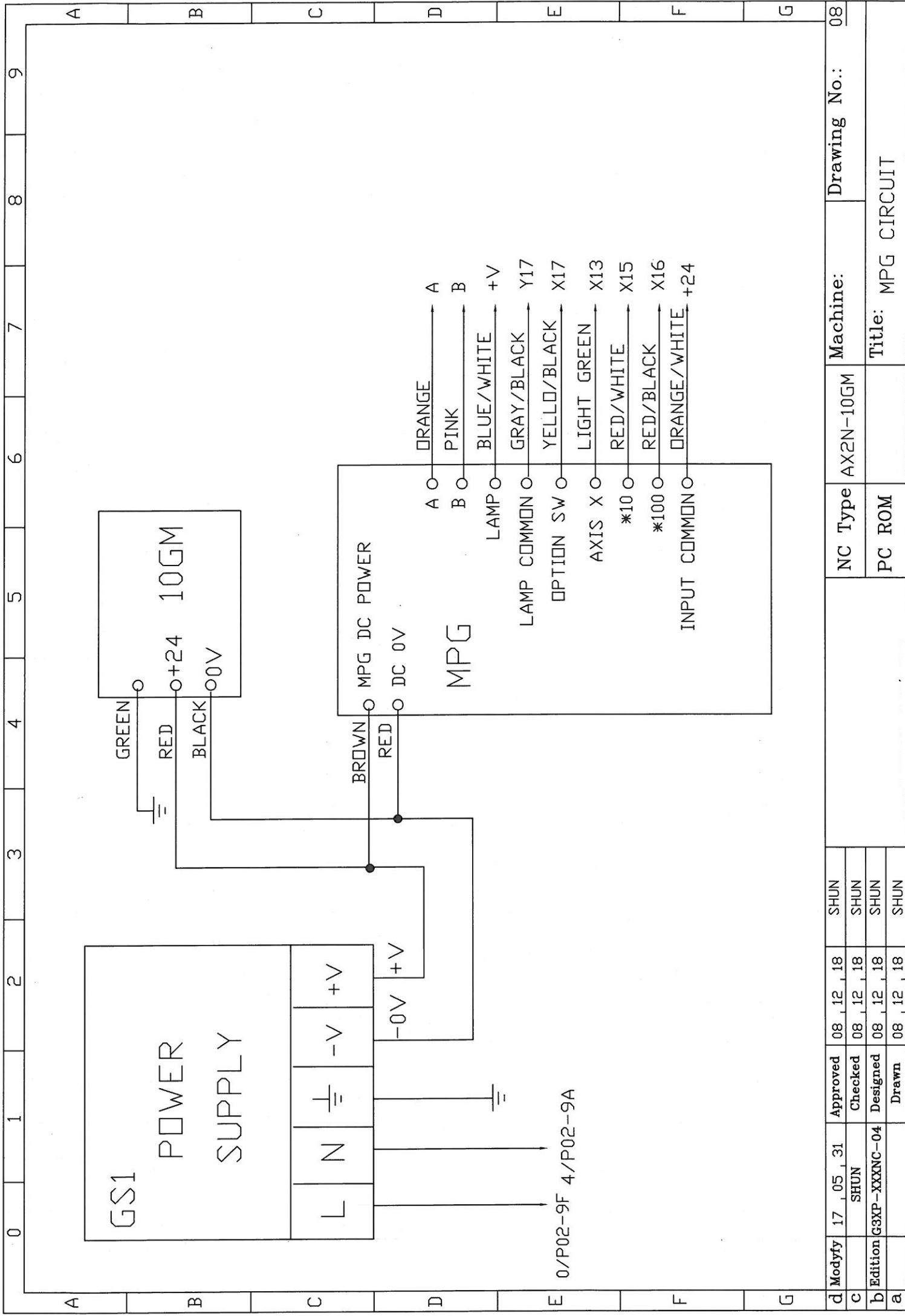
(OPTION)

U9 AXON-8EX (INPUT)

d	Modify	17	05	31	Approved	08	12	18	SHUN	MODEL:	AX2N-10GM	NC Type	AX2N-10GM	Drawing No.:	06
c			SHUN		Checked	08	12	18	SHUN			PC ROM			
b	Edition	G3XP	-XXXNC-04	Designed		08	12	18	SHUN	Title:	AX0N-8EX(PLC) INPUT				
a				Drawn		08	12	18	SHUN						

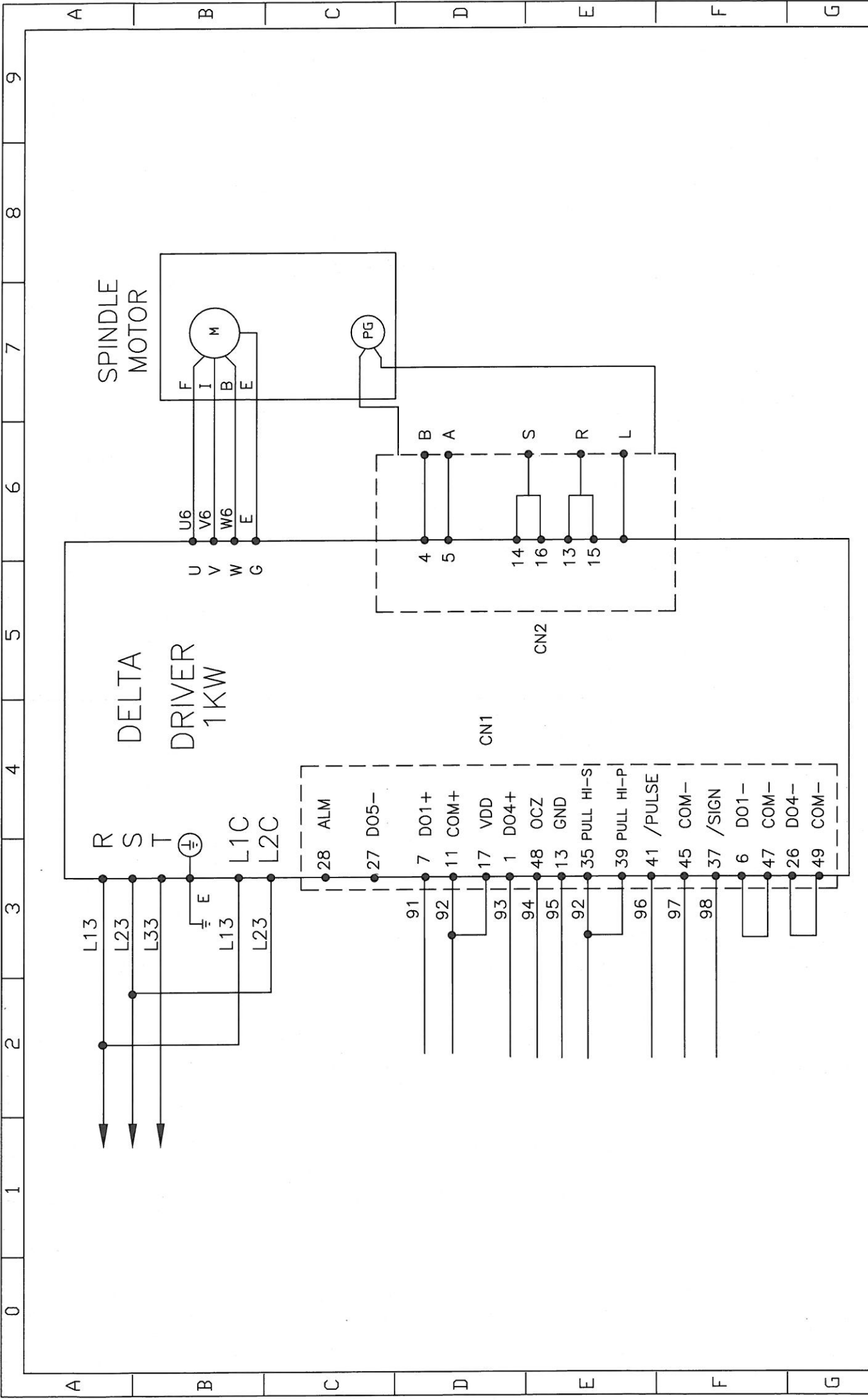


d	Modify	17	05	31	Approved	08	12	18	SHUN	MODEL: _____ Title: DRIVER LAYOUT	Drawing No.: 07
c					Checked	08	12	18	SHUN		
b	Edition	G3XP-XXXNC-04			Designed	08	12	18	SHUN		
a					Drawn	08	12	18	SHUN		



d	Modify	17	05	31	Approved	08	12	18	SHUN	Machine:	Drawing No.: 08
c		SHUN			Checked	08	12	18	SHUN		
b	Edition	G3XP-XXXNC-04			Designed	08	12	18	SHUN	Title: MPG CIRCUIT	
a					Drawn	08	12	18	SHUN		

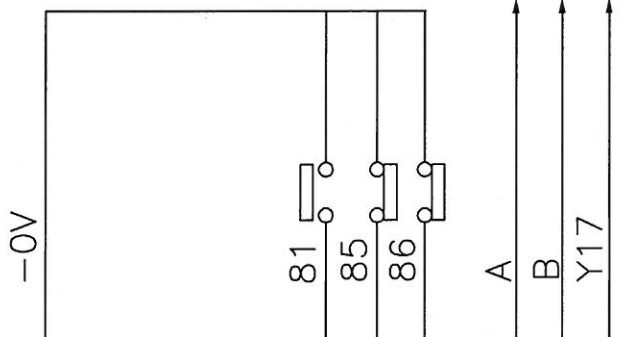




d	Modify	17_05_31	Approved	08_12_18	SHUN	Machine: 0D-SE AX2N-10GM Drawing No.: 09	
c		SHUN	Checked	08_12_18	SHUN		
b	Edition	G3XP-XXXNC-04	Designed	08_12_18	SHUN		
a			Drawn	08_12_18	SHUN		
NC Type						MODEL	Title: X AXIS DRIVER(DELTA)

0 1 2 3 4 5 6 7 8 9

IM-40P	10GM
TB	CON1
4	MANU
COM1	9
START	1
STOP	2
ZRN	3
FWD	4
RVS	5
DOG	6
LSF	7
LSR	8
COM1	19
X0	11
X1	12
X2	13
X3	14
Y0	15
Y1	16
Y2	17
Y3	18
Y4	10
Y5	20
Y5	20



DOG

ORIGIN 原點

FRONT LIMIT 前極限

BACK LIMIT 後極限

MPG-A

MPG-B

FROM P05-8F

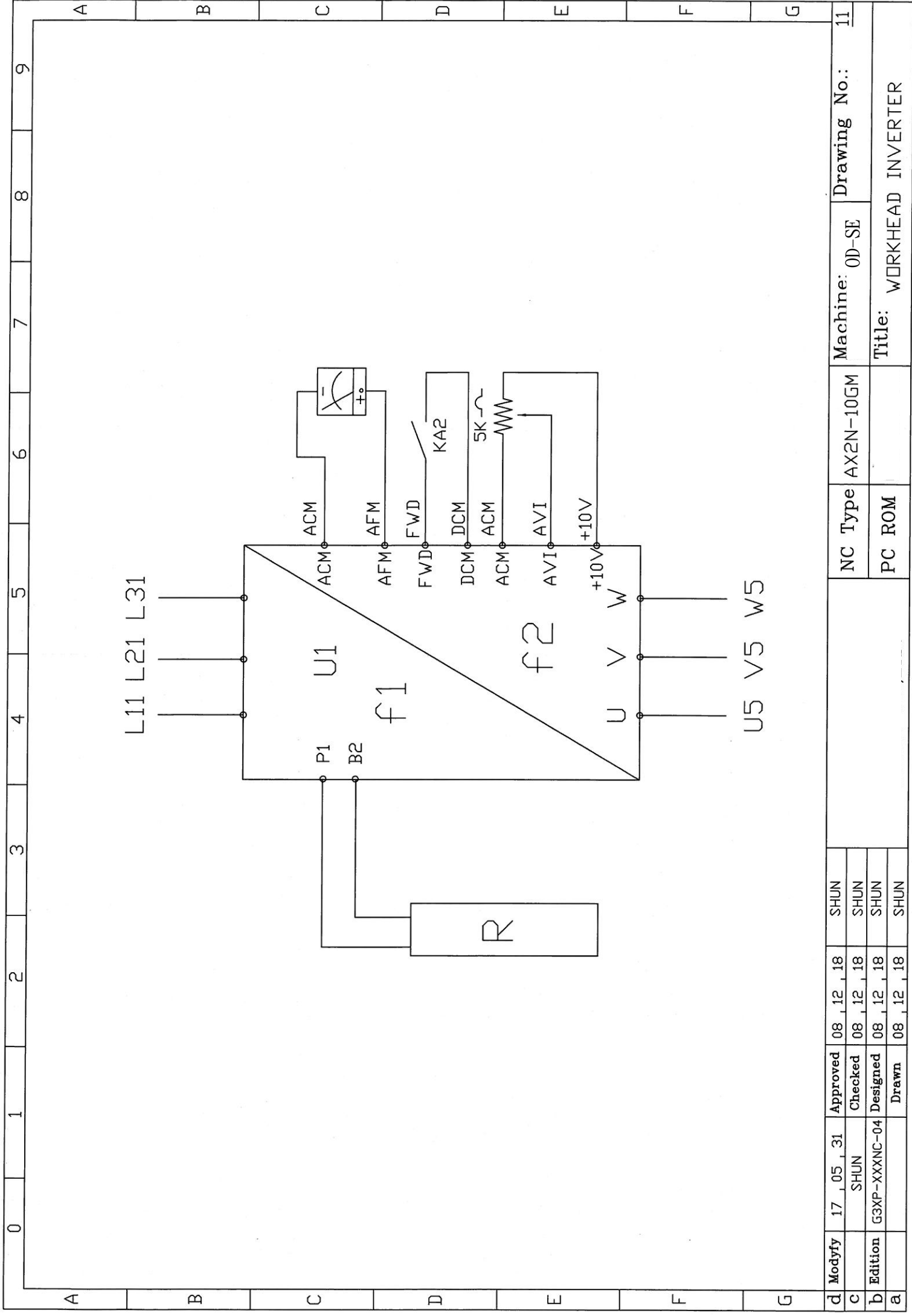
IM-40P	10GM
TB	CON2
40	SVRDY 1
38	COM2 2
37	COM2 12
39	SVEND 11
33	COM4 14
35	PGO 13
28	VIN 7
27	VIN 17
30	FPO 5
23,24	COM5 9,19
29	RP 16
	PPO 15
36	CLR 3
34	COM3 4

SERVO	CN1
7	DO1+
11	COM+
17	VDD
1	DO4+
48	OCZ
13	GND
35	PULL HI-S
39	PULL HI-F
41	/PULSE
45	COM-
37	/SIGN
6	DO1-
47	COM-
26	DO4-
49	COM-

d	Modyfy	17_05_31	Approved	08_12_18	SHUN
c		SHUN	Checked	08_12_18	SHUN
b	Edition	G3XP-XXXNC-04	Designed	08_12_18	SHUN
a			Drawn	08_12_18	SHUN

NC Type	AX2N-10GM
PC ROM	

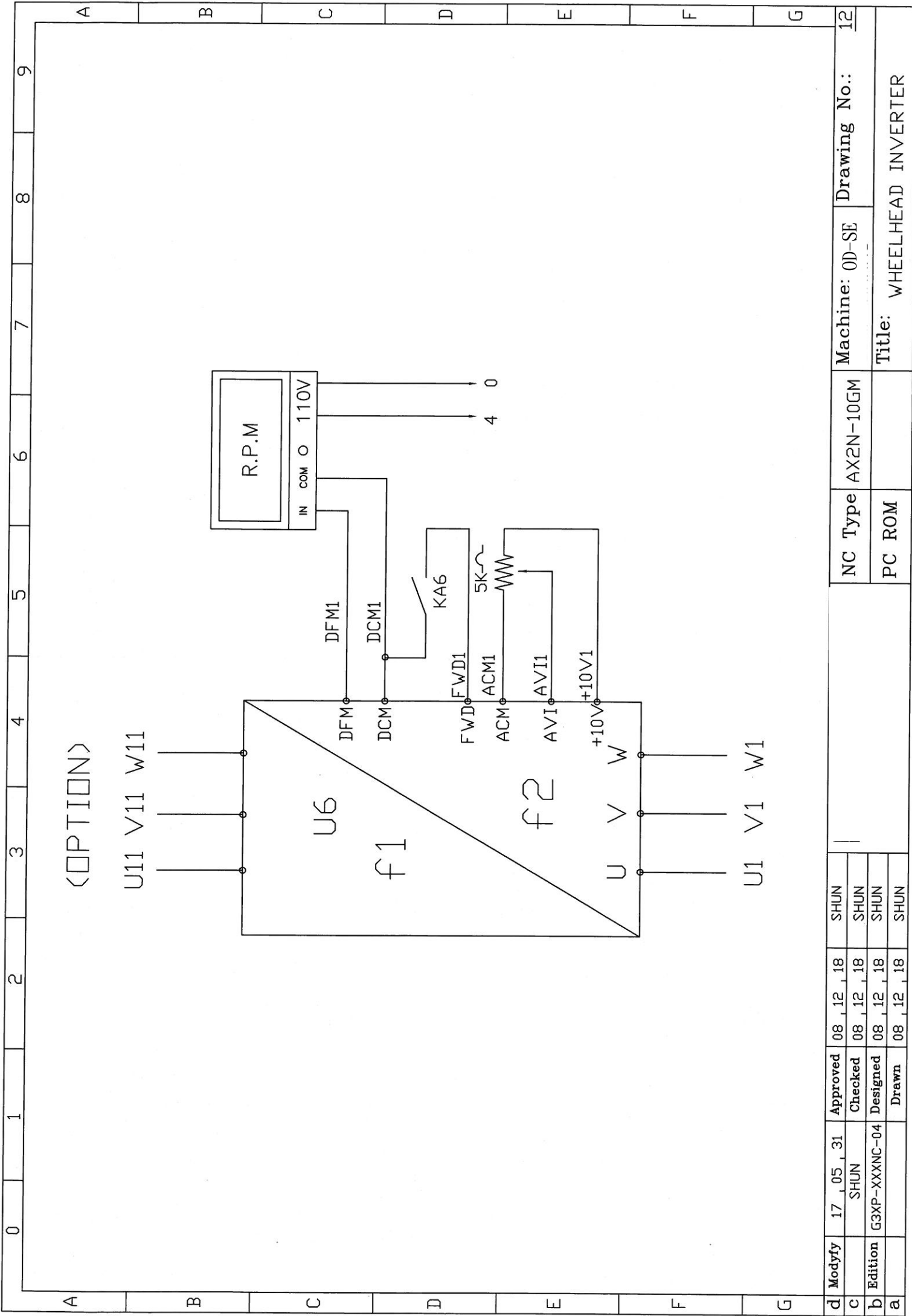
Machine:	0D-SE	Drawing No.:	10
Title: AX2N-10GM CRICUIT<DELTA>			



0 1 2 3 4 5 6 7 8 9

A B C D E F G

d	Modify	17	05	31	Approved	08	12	18	SHUN	Drawing No.: 11
c					Checked	08	12	18	SHUN	
b	Edition	G3XP-XXXNC-04			Designed	08	12	18	SHUN	
a					Drawn	08	12	18	SHUN	
										Machine: OD-SE
										Title: WORKHEAD INVERTER



<OPTION>

U11 V11 W11

U6

f1

f2

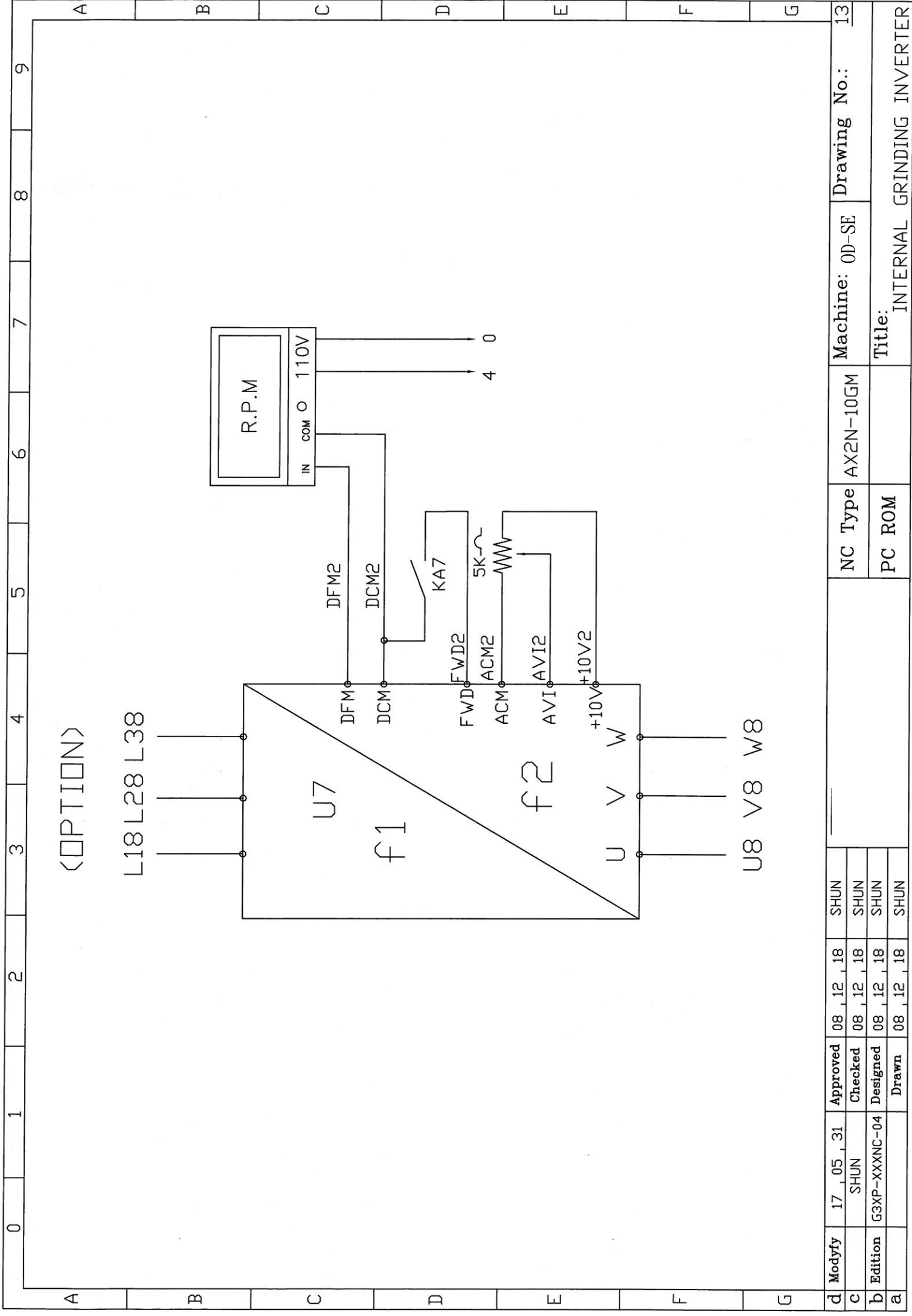
U

V

W

U1 V1 W1

d	Modify	17_05_31	Approved	08_12_18	SHUN	Machine: 0D-SE	Drawing No.: 12
c		SHUN	Checked	08_12_18	SHUN	NC Type AX2N-10GM	
b	Edition	G3XP-XXXNC-04	Designed	08_12_18	SHUN	PC ROM	Title: WHEELHEAD INVERTER
a			Drawn	08_12_18	SHUN		



<OPTION>

L18 L28 L38

U7

f1

f2

U

V

W

U8 V8 W8

R.P.M

IN COM O 110V

DFM2

DCM2

KA7

5k

FWD2

ACM2

AVI2

+10V2

DFM

DCM

FWD

ACM

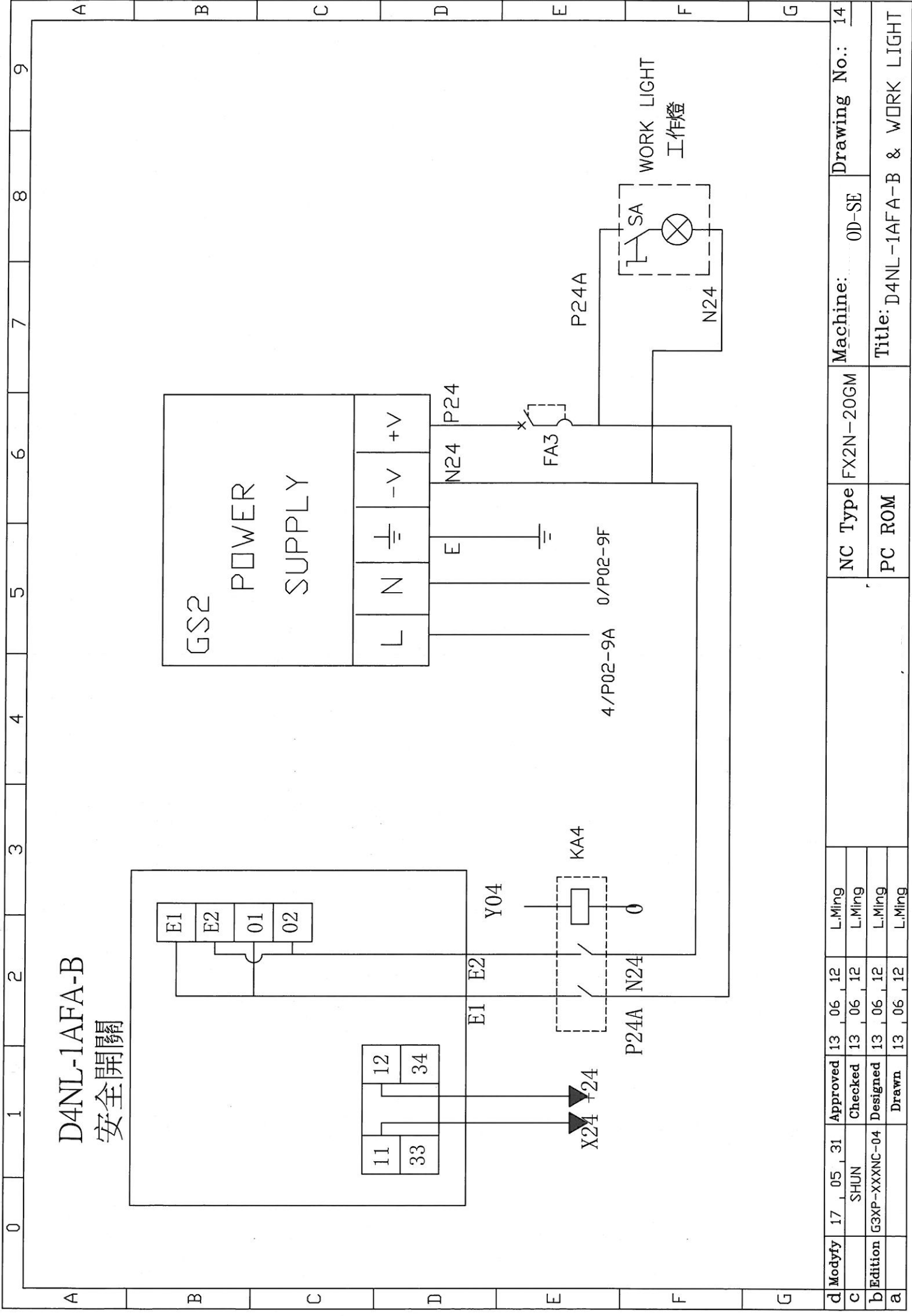
AVI

+10V

4

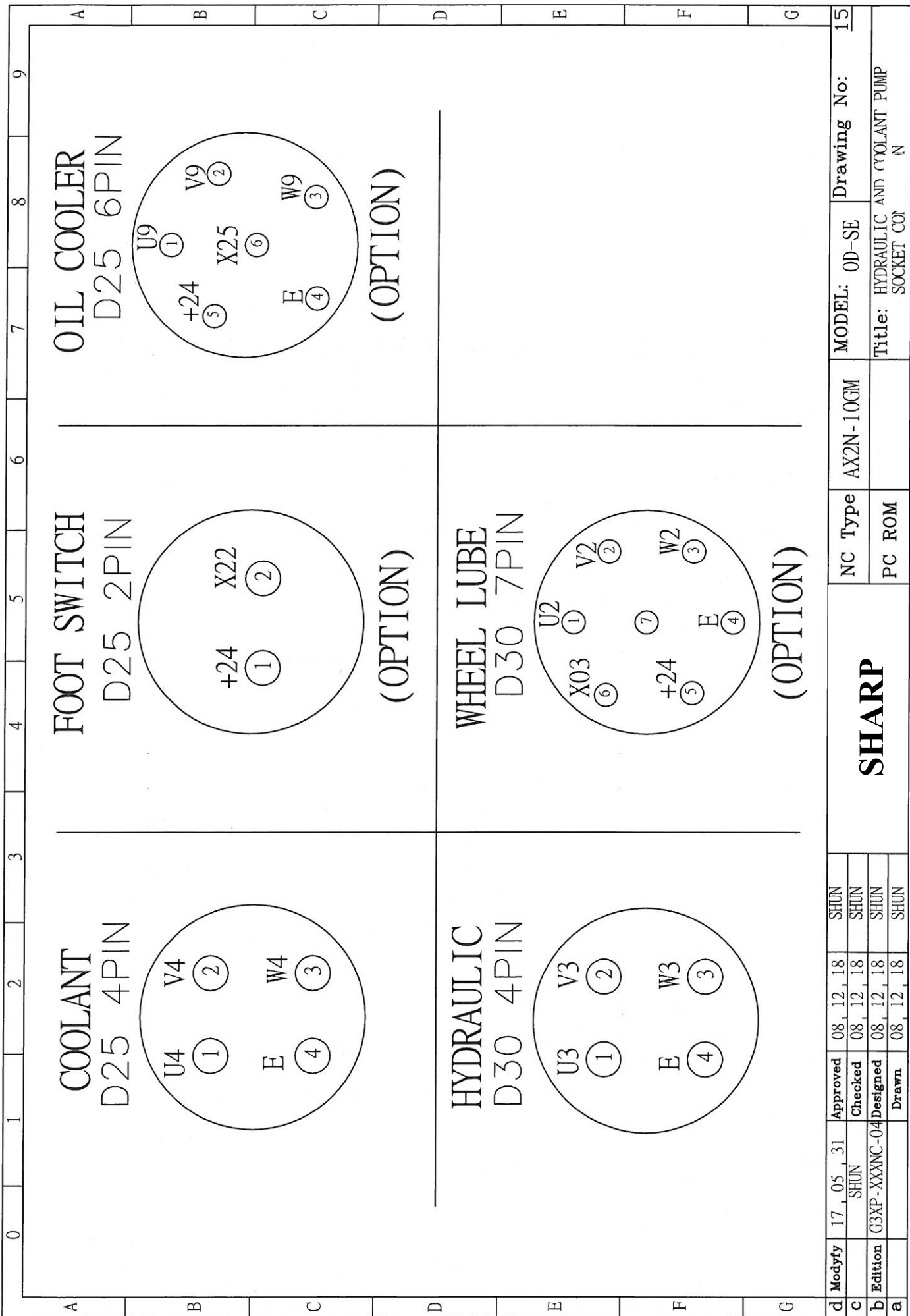
0

d	Modify	17_05_31	Approved	08_12_18	SHUN	
c		SHUN	Checked	08_12_18	SHUN	
b	Edition	G3XP-XXXNC-04	Designed	08_12_18	SHUN	
a			Drawn	08_12_18	SHUN	
		NC Type	AX2N-10GM	Machine:	OD-SE	
		PC ROM		Title:	INTERNAL GRINDING INVERTER	
					Drawing No.:	13

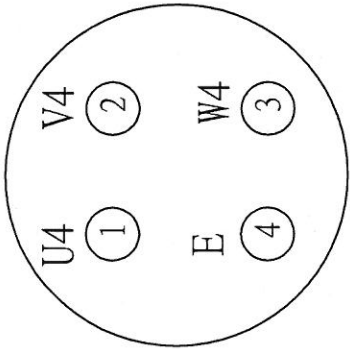


# D4NL-1AFA-B 安全開關

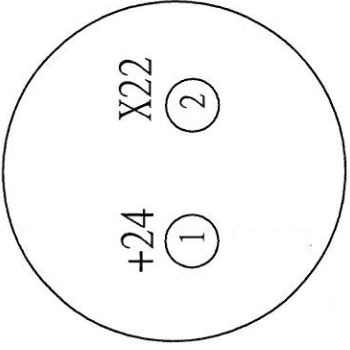
d	Modify	17	05	31	Approved	13	06	12	L.Ming	Drawing No.:	14
c		SHUN			Checked	13	06	12	L.Ming	Machine:	OD-SE
b		G3XP-XXXNC-04			Designed	13	06	12	L.Ming	NC Type	FX2N-20GM
a					Drawn	13	06	12	L.Ming	PC ROM	
										Title: D4NL-1AFA-B & WORK LIGHT	



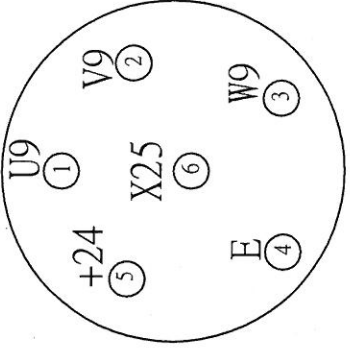
**COOLANT**  
D25 4PIN



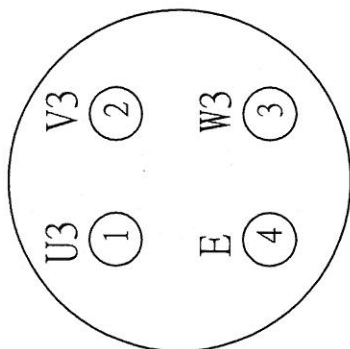
**FOOT SWITCH**  
D25 2PIN



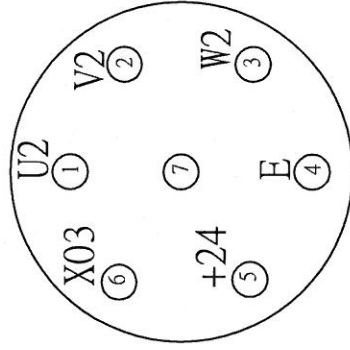
**OIL COOLER**  
D25 6PIN



**HYDRAULIC**  
D30 4PIN



**WHEEL LUBE**  
D30 7PIN

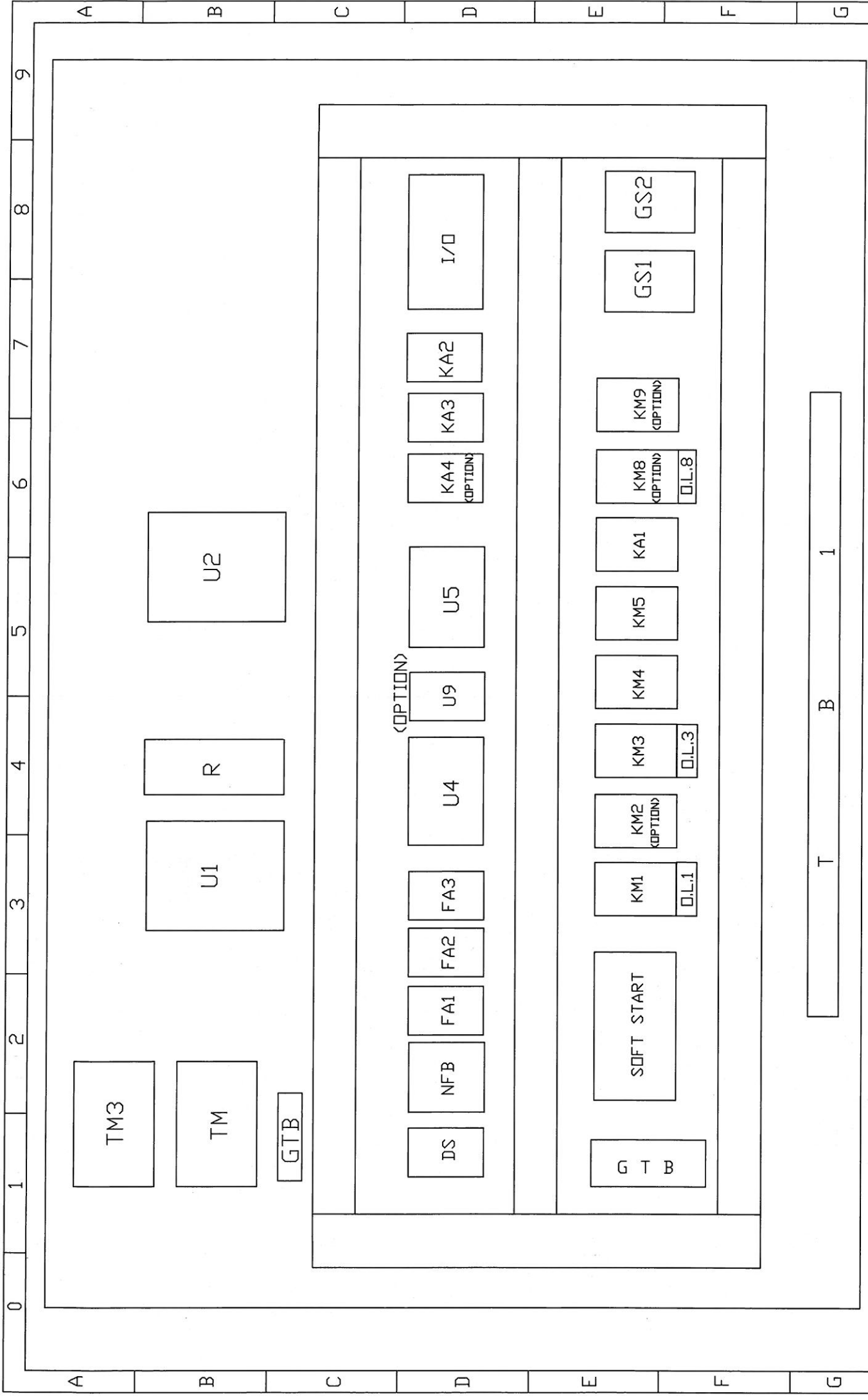


(OPTION)

(OPTION)

(OPTION)

<b>d</b> <b>Modfy</b>	17_05_31	<b>Approved</b>	08_12_18	SHUN	<b>SHARP</b>	<b>NC Type</b>	AX2N-10GM	<b>MODEL:</b>	OD-SE	<b>Drawing No:</b>	15
<b>c</b>	SHUN	<b>Checked</b>	08_12_18	SHUN		<b>PC ROM</b>		<b>Title:</b>	HYDRAULIC AND COOLANT PUMP SOCKET CO <sub>N</sub>		
<b>b</b> <b>Edition</b>	G3XP-XXXNC-04	<b>Designed</b>	08_12_18	SHUN							
<b>a</b>		<b>Drawn</b>	08_12_18	SHUN							



d	Modify	17	05	31	Approved	08	12	18	SHUN	NC Type	AX2N-10GM	MODEL:	0D-SE	Drawing No.:	16	
c					Checked	08	12	18	SHUN							
b	Edition	G3XP-XXXNC-04			Designed	08	12	18	SHUN	PC ROM	Title:	LAYOUT				
a					Drawn	08	12	18	SHUN							

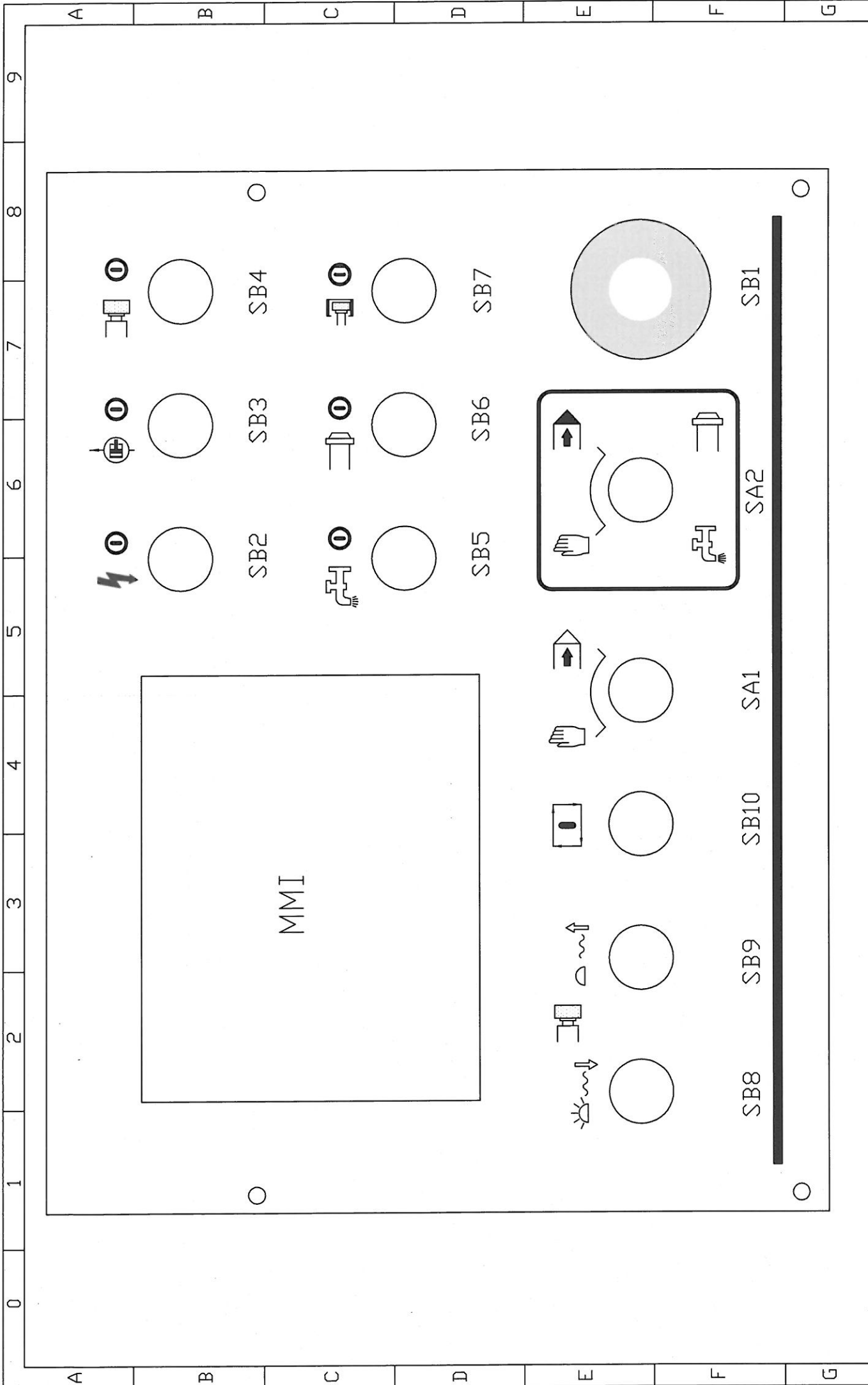


	A	B	C	D	E	F	G
	SUPERTEC DOCUMENT NUMBER	ITEM DESIGNATION	DESIGNATION & FUNCTION	TECHNICAL DATA	QUANTITY	SUPPLIER	REMARKS
9	EFAC0010	NFB	CIRCUIT BREAKER	3P50A	1	MOELLER 3P	CE
8	EFAC0050	FA1	CIRCUIT BREAKER	1P6A	1	MOELLER 1P	CE
	EFAC0050	FA2	CIRCUIT BREAKER	1P6A	1	MOELLER 1P	CE
	EFAC0050	FA3	CIRCUIT BREAKER	1P6A	1	MOELLER 1P	CE
7	ESQP0180	DS	DOOR SWITCH	P1-32/V/SVB-SW	1	MOELLER	CE
	ETRF0020	TM	TRANSFORMER	1φ 400VA	1	SUENN LIANG	CE
	ETRF	TM2	TRANSFORMER (OPTION)	3φ 1.5KVA	1	SUENN LIANG	CE
	ETRF	TM3	REACTOR	3φ 2HP	1	SUENN LIANG	CE
6	EIVT0150	U1	INVERTER	VFD015B23A	1	DELTA	CE
	EREG0620	R	RESISTANCE	300W 100 Ω	1	DELTA	CE
	EDRV0030	U2	SERVO MOTOR DRIVER	MR-J2S-100A	1	MITSUBISHI	CE
	EPLC0120	U4	PLC CONTROLLER	AX2N-32MR	1	SHIHLIN	CE
5	EPLC0150	U5	PLC CONTROLLER	AX2N-10GM	1	SHIHLIN	CE
	ESSR0010	SOFT START	MOTOR CONTROLLER	220V 7.5HP	1	JK	CE
	EDRV0760	I/O	TRANSFORM-MODULE	CS-2 I/O	1	SUPERTEC	
4	EKMR0110	KA1	WORKHEAD FAN	CN-11	1	TECO	CE
	EKAR0190	KA2	RELAY(AC 110V) CONTROL	5A 250VAC	1	OMRON MY4N	CE
	EKAR0190	KA3	RELAY(AC 110V) CONTROL	5A 250VAC	1	OMRON MY4N	CE
3	ESQP0480	SQ1	PROXIMITY SWITCH	BES M12M1 -PSC40B-S04G	1	BALLUFF	CE
	ESQP0120	SQ2	LIMIT SWITCH	MJ2-1306	1	MOJEN	CE
2	ESCR0060	DOG	LIMIT SWITCH	BNS-819-B03 -D12-61-12-3B	1	BALLUFF	CE
1	EKMR0010	KM1	WHEEL	HND-18 7.5HP	1	TECO	CE
	EKMR0110	KM2	LUBRICATION (OPTION)	CN-11	1	TECO	CE
	EKMR0040	KM3	HYDRAULIC	HND-11 2HP	1	TECO	CE
	EKMR0110	KM4	COOLANT	CN-11	1	TECO	CE
	EKMR0110	KM5	POWER	CN-11	1	TECO	CE
	EKMR0040	KM8	INTERNAC GRIND (OPTION)	HND-11 2HP	1	TECO	CE
0	EGSU0210	GS	POWER SUPPLY	NES-15-24	1	MEAN WEEL	CE

d	Modify	17_05_31	SHUN	Approved	08_12_18	SHUN
c				Checked	08_12_18	SHUN
b	Edition	G3XP-XXXNC-04		Designed	08_12_18	SHUN
a				Drawn	08_12_18	SHUN

MODEL: OD-SE      NC Type: AX2N-10GM      PC ROM

Drawing No.: 17  
Title: ELECTRICAL CABINET LIST



d	Modify	17	05	31	Approved	08	12	18	SHUN	NC Type	AX2N-10GM	MODEL:	0D-SE	Drawing No.:	18
c					Checked	08	12	18	SHUN	PC ROM		Title: PANEL LAYOUT			
b	Edition	G3XP-XXNC-04			Designed	08	12	18	SHUN						
a					Drawn	08	12	18	SHUN						

A		B		C		D		E		F		G	
9		8		7		6		5		4		3	
0		1		2		3		4		5		6	
A		B		C		D		E		F		G	
SUPERTEC DOCUMENT NUMBER		ITEM DESIGNATION		DESIGNATION & FUNCTION		TECHNICAL DATA		QUANTITY		SUPPLIER		REMARKS	
ESWP2490		SB1		E-STOP PUSH BUTTON		R2PNR4-1B-R		1		RENY		CE	
ESWP2430		SB2		MAIN POWER PUSH BUTTON		R2PIH-1A-R		1		RENY		CE	
ESWP2410		SB3		HYDRAULC PUSH BUTTON		R2PIH-1A-G		1		RENY		CE	
ESWP2410		SB4		WHEELHEAD PUSH BUTTON		R2PIH-1A-G		1		RENY		CE	
ESWP2410		SB5		COOLANT PUSH BUTTON		R2PIH-1A-R		1		RENY		CE	
ESWP2410		SB6		WORKHEAD PUSH BUTTON		R2PIH-1A-G		1		RENY		CE	
ESWP2410		SB7		INTERNAC PUSH BUTTON		R2PIH-1A-G		1		RENY		CE	
ESWP2410		SB8		RAPID INFEED PUSH BUTTON		R2PNF-1A-G		1		RENY		CE	
ESWP2410		SB9		RAPID RETRACT PUSH BUTTON		R2PNF-1A-G		1		RENY		CE	
ESWP2420		SB10		CYCLE START PUSH BUTTON		R2PIH-1A-W		1		RENY		CE	
ESWP2470		SA1		MODE SELECT SWITCH		R2SNS-2F-1A-B		1		RENY		CE	
ESWP2470		SA2		SPINDLE/COOLANT AUTO/MANUAL SELECT SWITCH		R2SNS-2F-1A-B		1		RENY		CE	
ESWP2580		SB11		WORKHEAD SPINDLE JOG PUSH BUTTON		R2PNF-1A-B		1		RENY		CE	
EMMI0120		MMI		TOUCH SCREEN		GT1050-QBBD		1		MITSUBISHI		CE	

Drawing No.:		19	
MODEL:		0D-SE	
NC Type		AX2N-10GM	
PC ROM			
<b>SHARP</b>			
Modfy		17_05_31	
Approved		SHUN	
Checked		SHUN	
Designed		G3XP-XXXNC-04	
Drawn		SHUN	
SHUN		08_12_18	
SHUN		08_12_18	
SHUN		08_12_18	
SHUN		08_12_18	

Title: PANEL LIST