

PARTS BOOK

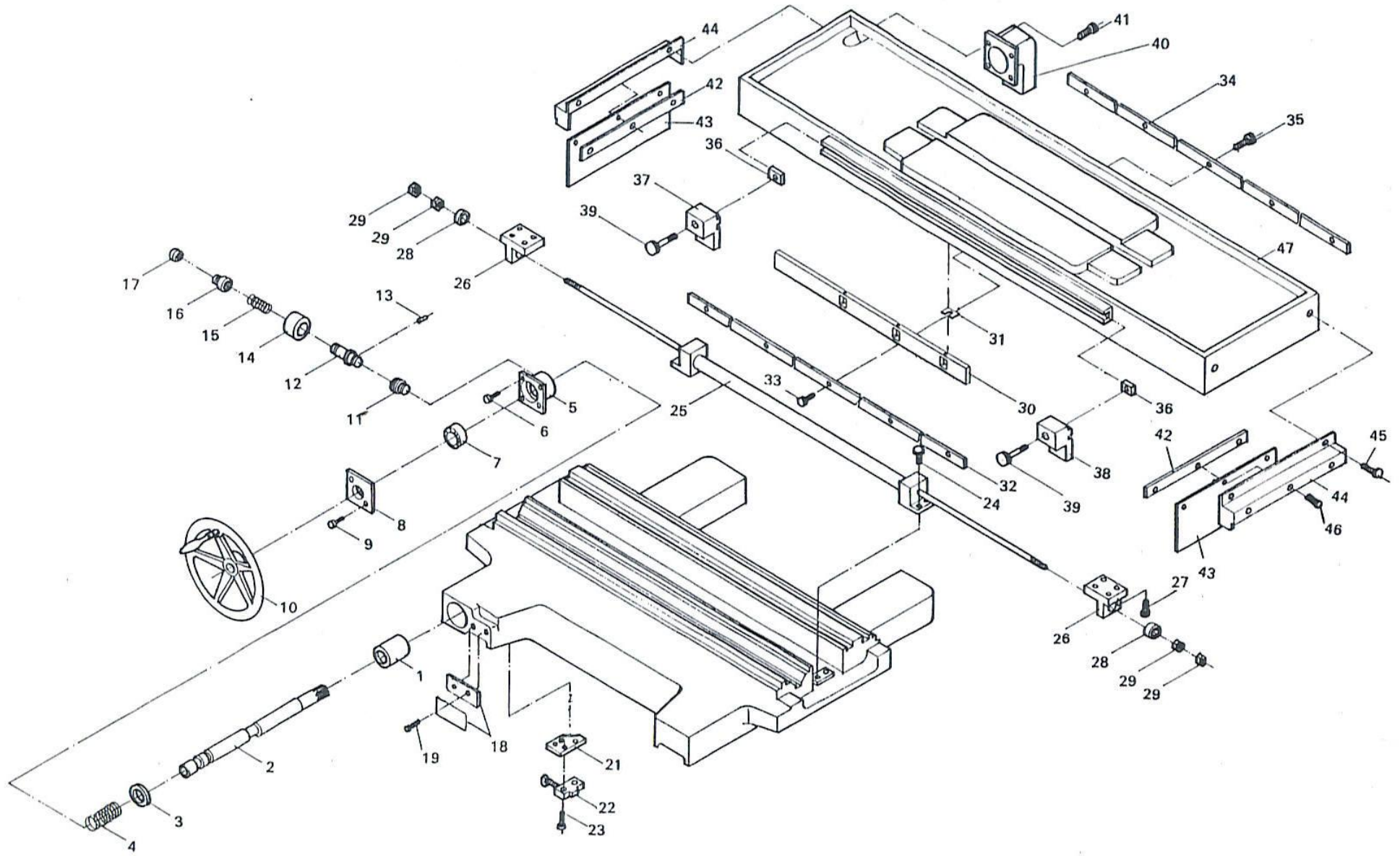
Model - SG-618-2A

協宝専用

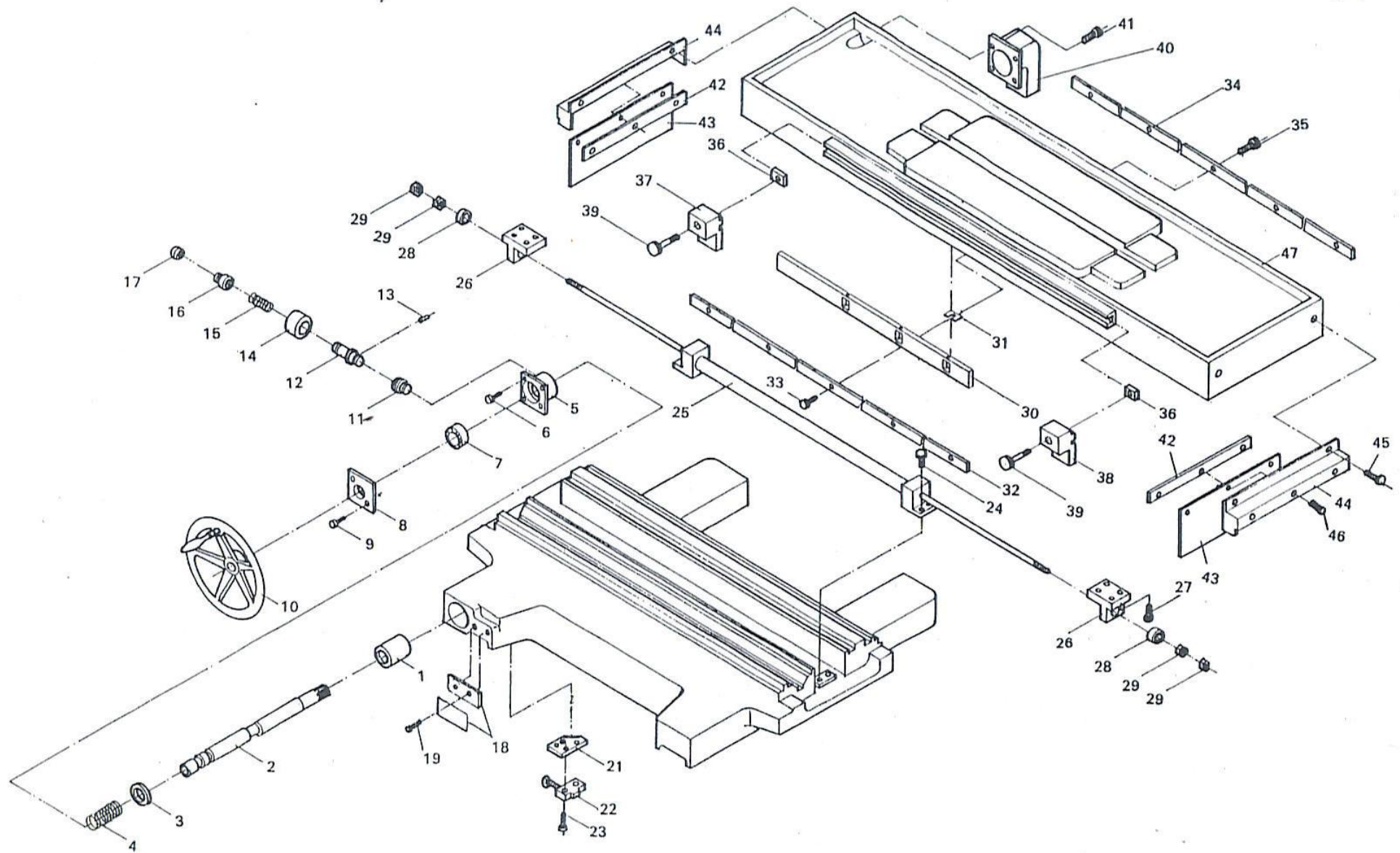
Model: SG-618-2A

CONTENTS

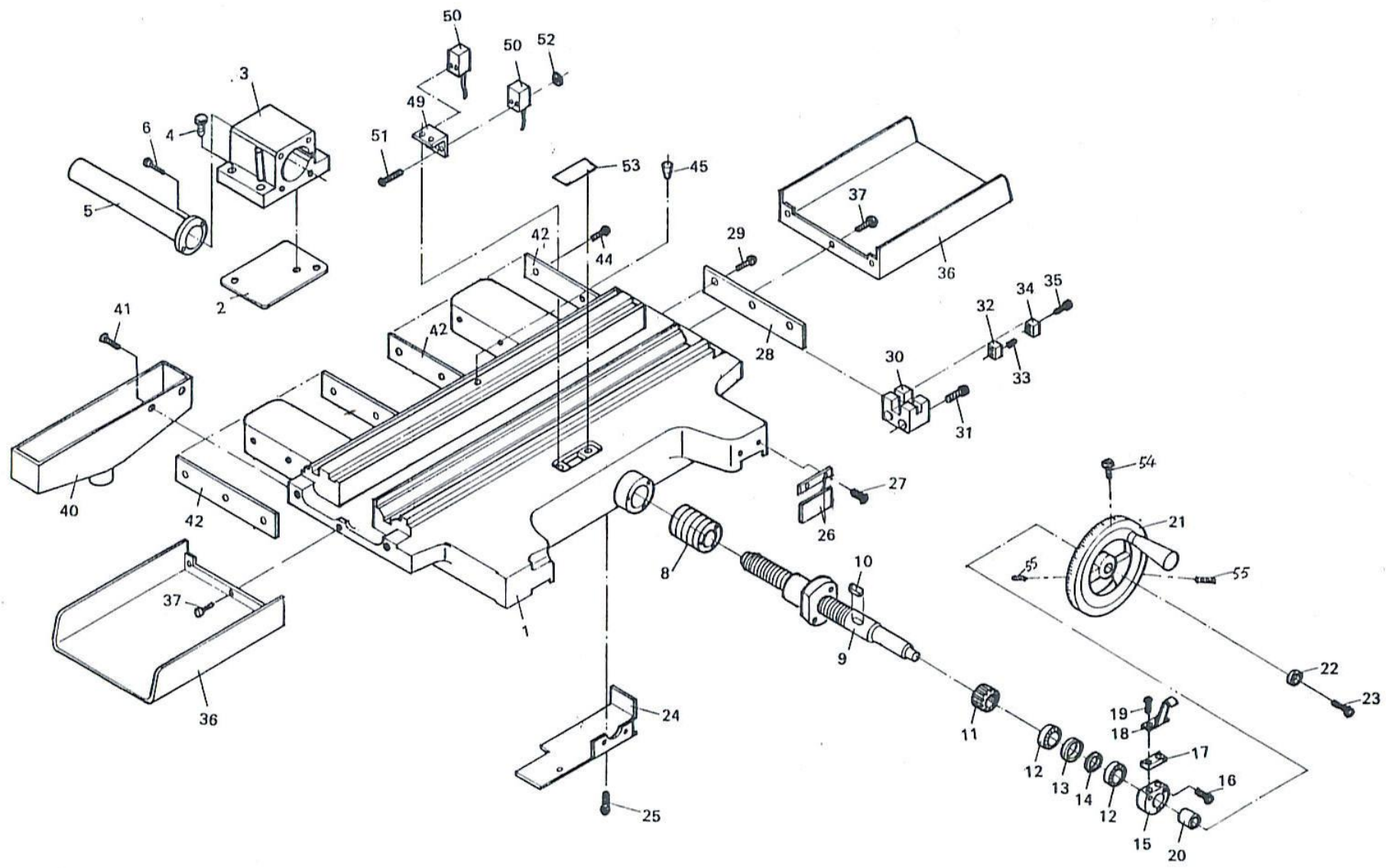
<i>LONGITUDINAL FEED MECHANISM</i>	<i>1 ~ 3</i>
<i>CROSS FEED MECHANISM</i>	<i>4 ~ 6</i>
<i>COLUMN</i>	<i>7 ~ 8</i>
<i>BASE</i>	<i>9 ~ 10</i>
<i>SPINDLE UNIT</i>	<i>11 ~ 13</i>
<i>CONTROL BOX</i>	<i>14 ~ 15</i>
<i>HYDRAULIC FEED MECHANISM</i>	<i>16 ~ 17</i>
<i>COOLANT AND DUST SUCTION SYSTEM</i>	<i>18 ~ 19</i>
<i>HYDRAULIC POWER UNIT</i>	<i>20 ~ 21</i>
<i>HYDRAULIC</i>	<i>22 ~ 23</i>



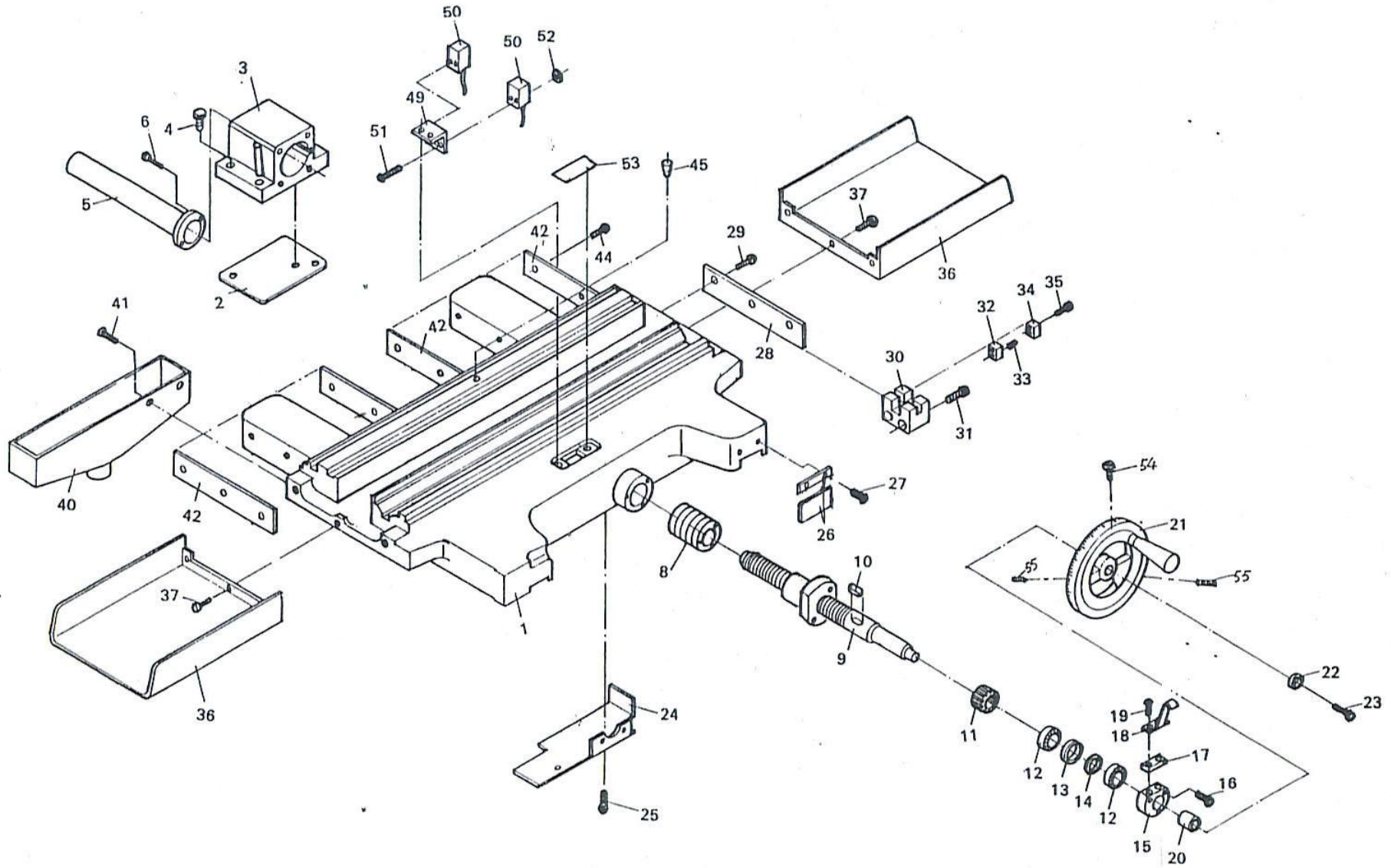
LONGITUDINAL FEED MECHANISM							
NO	PARTS NO	DESCRIPTION	QTY	NO	PARTS NO	DESCRIPTION	QTY
1	H-011	Bush	1				
2	H-316	Pinion	1	21	H-307	Switch base	1
3	H-309	Washer	1	22		Micro switch z-15GQ2 -B	1
4		Spring $\varnothing 30 \times \varnothing 2 \times 90 \text{LX} 8 \text{N}$	1	23		Screw HS M5X15	2
5	H-308	Bracket	1	24		Screw HS M6X20	4
6		Screw HS M5X20	2	25	H-041	Cylinder	1
7		Needle bearing RNAF 223516	1	26	H-016	Bracket	2
8	H-007	Cover	1	27		Screw HS M6X25	8
9		Screw HF M5X10	2	28	301608	Washer	2
10	H-031	Handwheel	1	29		Nut HN M12	4
11	H-304	Nut	1	30	H-010	Rack	1
12	H-302	Shaft	1	31	H-008	Spacer	3
13		Spring washer $\varnothing 2.5 \times 8$	1	32	H-018	Fixing plate	1
14	H-303	Spring guide	1	33		Screw HB M5X6	5
15		Spring $\varnothing 9 \times \varnothing 0.9 \times 30 \times 8 \text{n}$	1	34	H-017	Fixing plate	1
16	H-305	Screw	1	35		Screw HF M5X6	5
17		Knob	1	36	101014	T nut	4
18	H-028	Dust cover	1	37	H-013	L-dog	1
19		Screw HB M5X6	2	38	H-015	R-dog	1



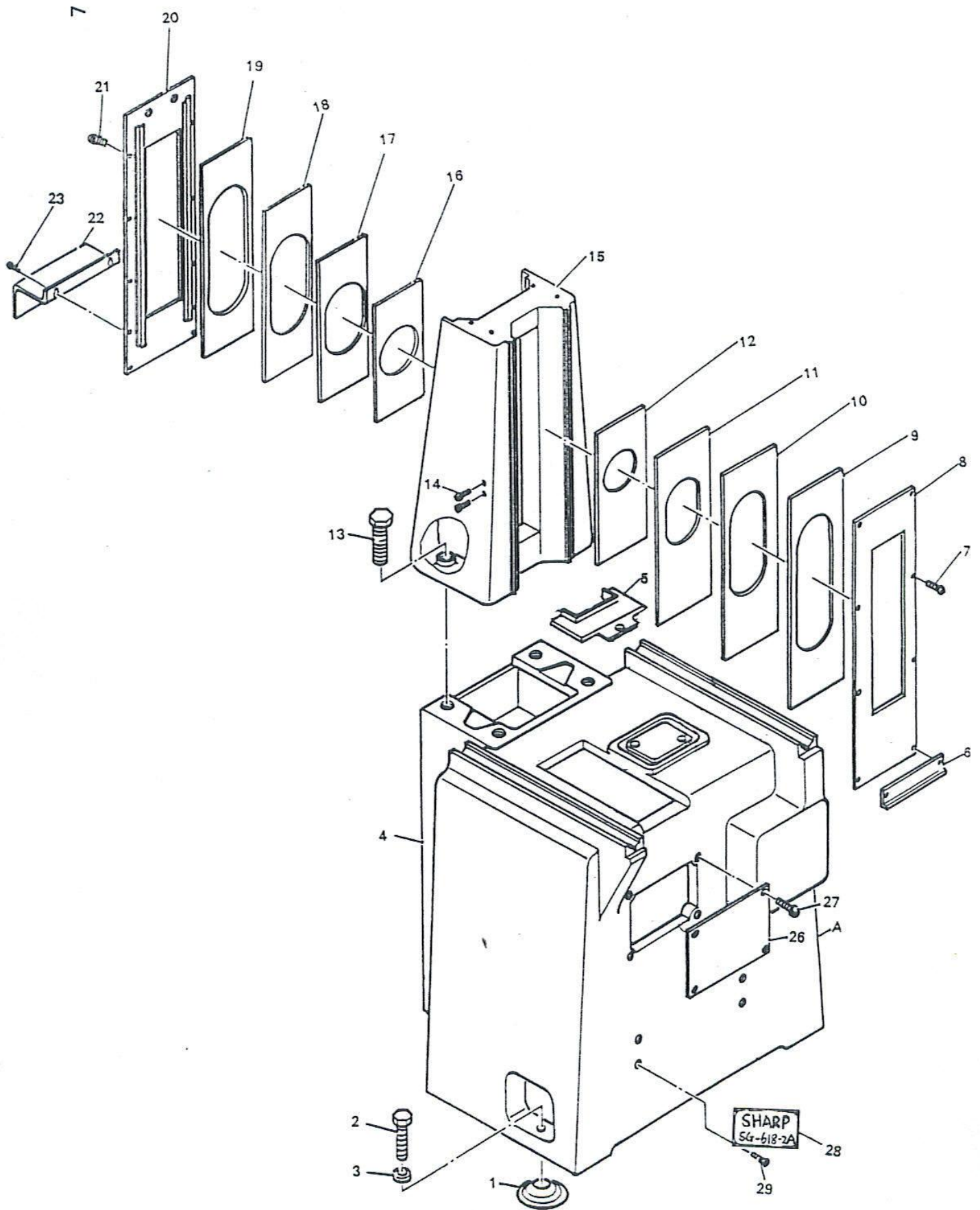
LONGITUDINAL FEED MECHANISM							
NO	PARTS NO	DESCRIPTION	QTY	NO	PARTS NO	DESCRIPTION	QTY
39	H-004	Screw	2				
40	H-030	Drain base	1				
41		Screw HB M5X10	4				
42	H-045	Fixing plate	2				
43		Rubber plate	2				
44	H-014	Dust cover	2				
45		Screw HB M5X6	4				
46		Screw HB M5X6	6				
47	H-001	Table	1				
			1				



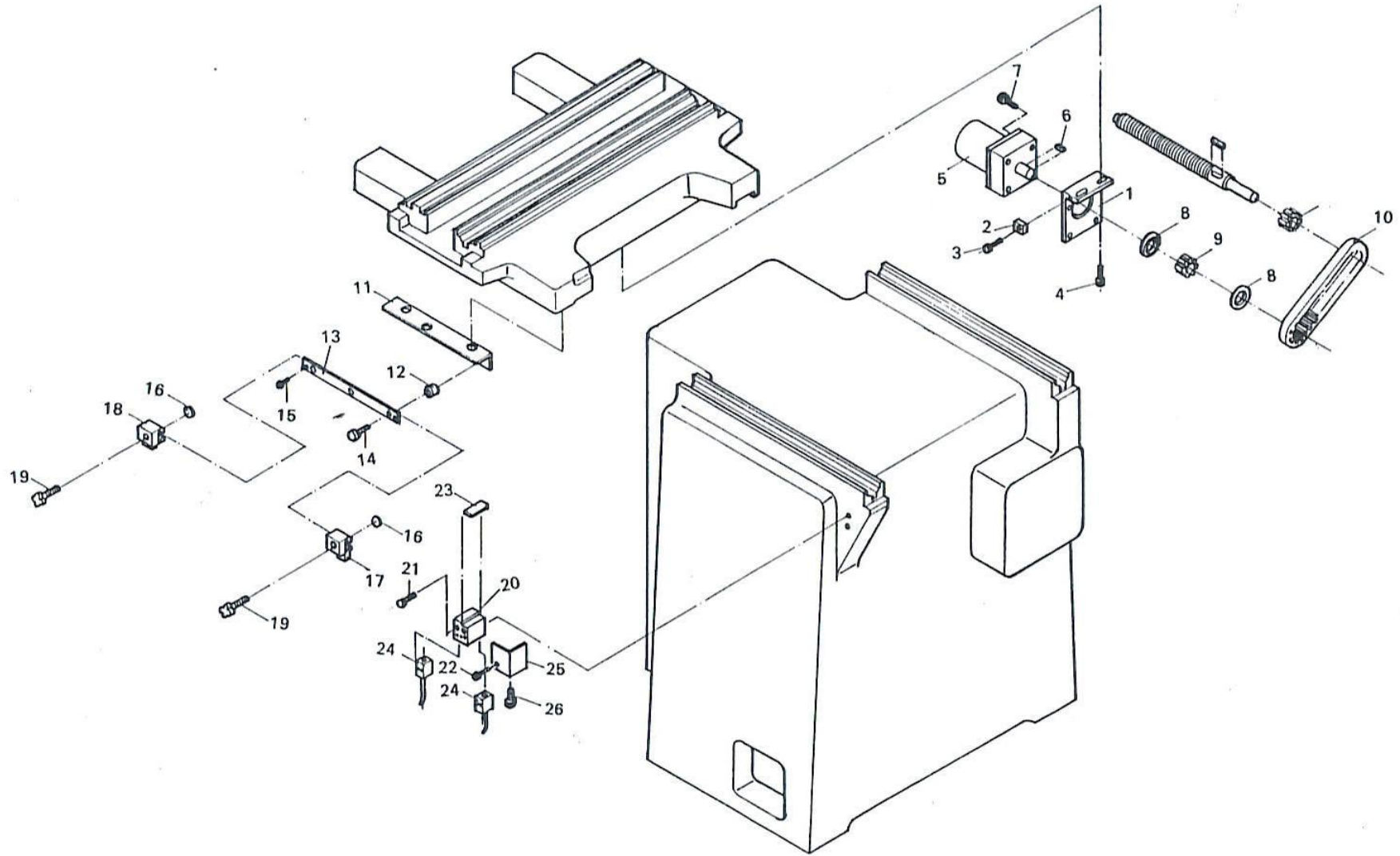
CROSS FEED MECHANISM							
NO	PARTS NO	DESCRIPTION	QTY	NO	PARTS NO	DESCRIPTION	QTY
1	H-202	Saddle	1	20	H-068	Collar	1
2	103016	Spacer	1	21	H-065	Hand wheel	1
3	H-317	Bracket	1	22	H-069	Collar	1
4		Screw HS M8X30	2	23		Screw HS M8X15	1
5	101034	Dust cover	1	24	H-064	Protection cover	1
6		Screw HS M5X10	2	25		Screw HB M5X6	2
				26	113002	Cover	1
8	103028	Bellows	1	27		Screw HS M6X10	3
9	H-058	Ball-screw	1	28	103007	Stroke plate	1
10		Key 15X8X7	1	29		Screw HS M6X10	3
11	H-319	Pulley	1	30	104020	Locking bracket	1
12		Bearing 6202 ZZ	2	31		Screw HS M5X20	2
13	101025	Collar	1	32	104021	Fastener (—)	1
14	103011	Collar	1	33		Screw HSS M5X8	2
15	103025	Indicator bracket	1	34	104022	Fastener (≡)	1
16		Screw HS M5X20	3	35		Screw HS M6X20	1
17	H-066	Spacer	1	36	H-019	U metal	2
18	103014	Indicator	1	37		Screw HS M5X8	6
19		Screw HB M5X8	2				



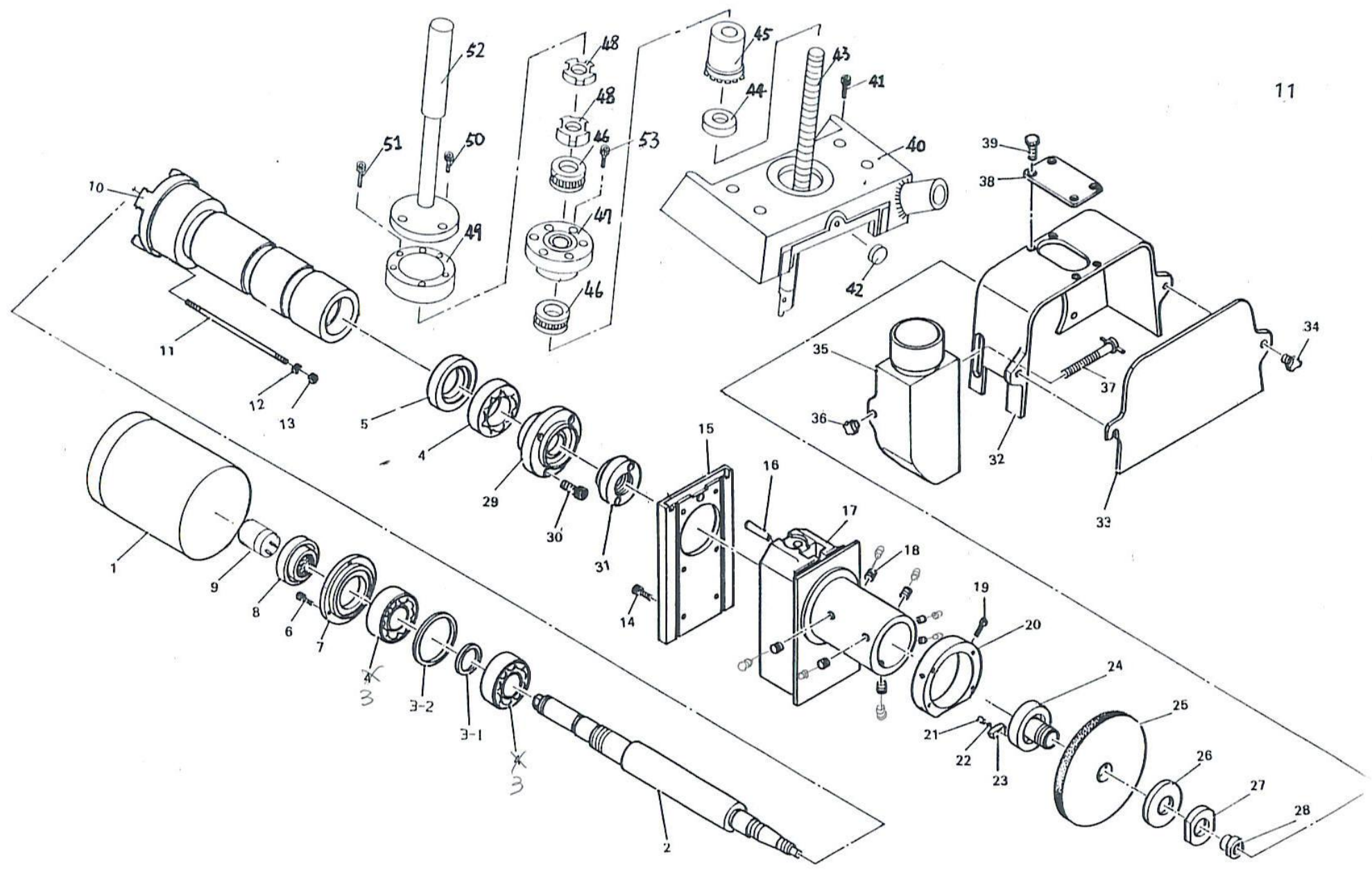
CROSS FEED MECHANISM							
NO	PARTS NO	DESCRIPTION	QTY	NO	PARTS NO	DESCRIPTION	QTY
40	H-032	Drain	1				
41		Screw HS MBX20	2				
42	103024	Fixing plate	4				
44		Screw HB M3X6	12				
45	101035	Taper pin	2				
49	H-026	Bracket	1				
50		Proximity switch TL-03	2				
51		Screw HB M3X25	4				
52		Nut HN M3	4				
53	H-042	Plastic cover	1				
54	103022	Nut HN M3	1				
55	102027	Plastic cover	2				



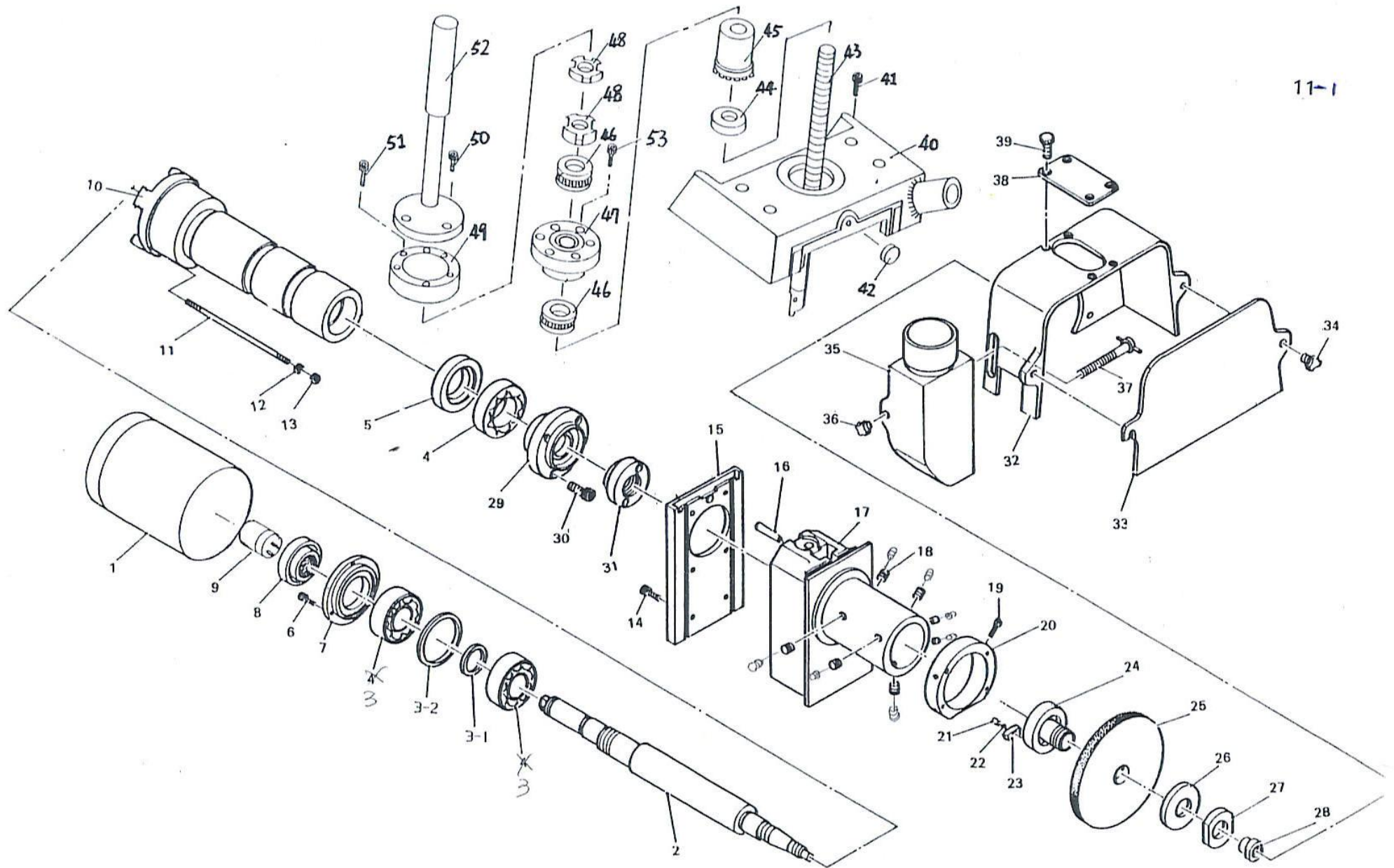
COLUMN							
NO	PARTS NO	DESCRIPTION	QTY	NO	PARTS NO	DESCRIPTION	QTY
1	105006	Base plate	5	20	B-017	Rear fixing plate	1
2	105007	Screw HH M16X75	5	21		Screw HB M5X8	10
3		Nut HN M16	5	22	B-018	Pump cover	1
4	H-203	Base	1	23		Screw HS M5X8	2
5	103021	Cover	1				
6	102048	Cover	1				
7		Screw HB M5X8	6	26	H-035	Sheet metal	1
8	102060	Front cover	1	27		Screw HB M5X10	4
9	102064	Cover-4	1	28	C-034-3	Name plate	1
10	102063	Cover-3	1	28	C-034-4	Name plate	1
11	102062	Cover-2	1	29		Screw HF M4X6	4
12	102061	Cover-1	1				
13		Screw HH M16X65	4				
14		Screw HS M6X15	2				
15	202001	Column	1				
16	102059	Rear cover-1	1				
17	102045	Rear cover-2	1				
18	102046	Rear cover-3	1				
19	102047	Rear cover-4	1				



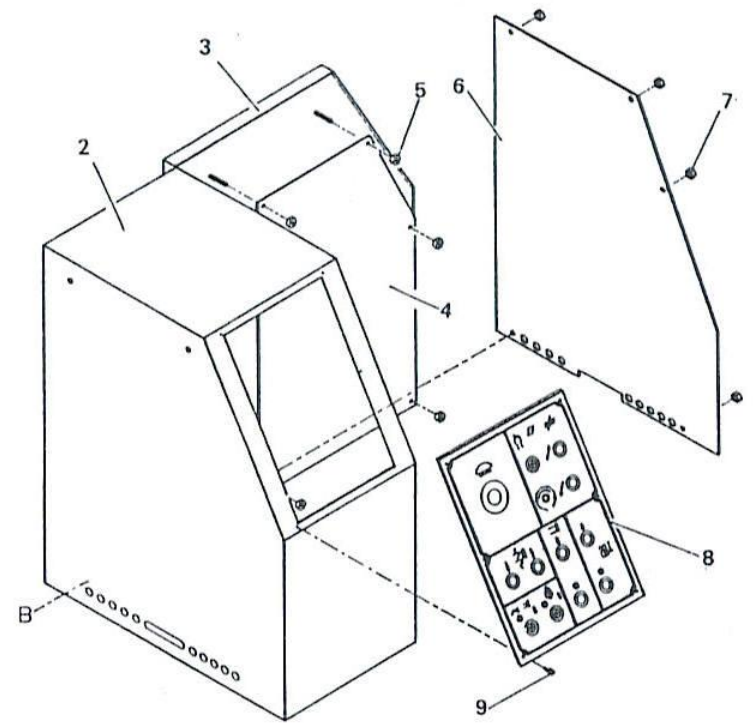
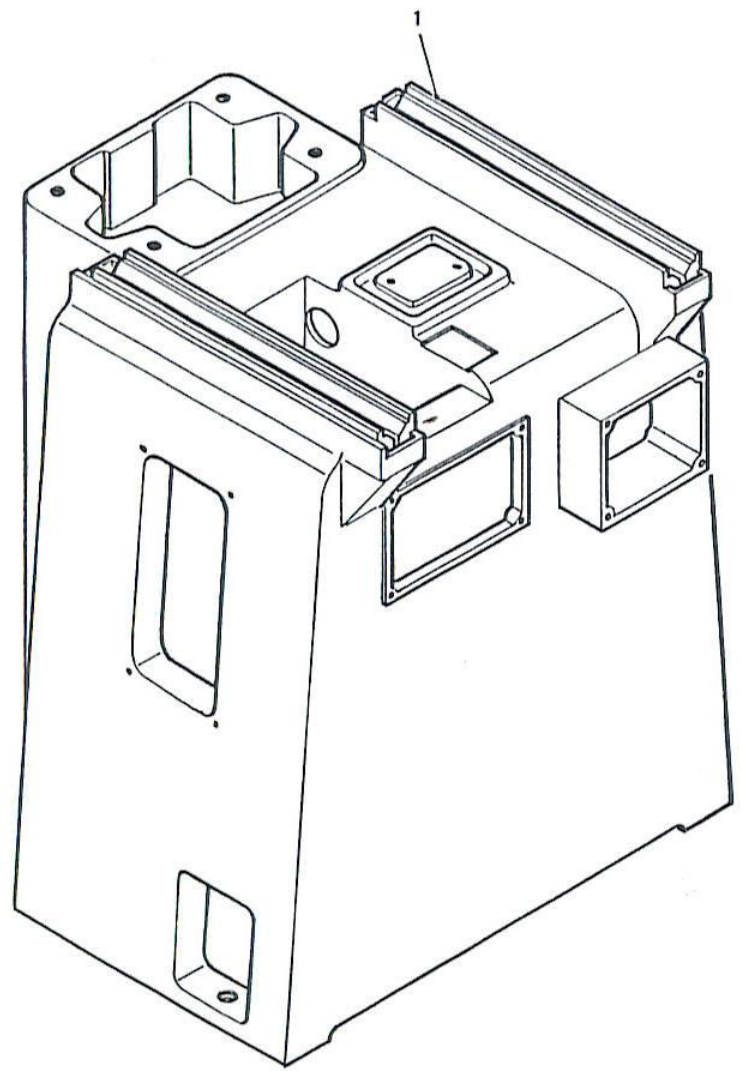
BASE							
NO	PARTS NO	DESCRIPTION	QTY	NO	PARTS NO	DESCRIPTION	QTY
1	H-051	Motor base	1	20	H-314	Proximity switch base	1
2	H-052	Fasten block	1	21		Screw HB M5X6	2
3		Screw HS M5X30	1	22		Screw HS M5X50	1
4		Screw HS M5X25	2	23	H-060	Cover	1
5		Motor 4RK-25GN	1	24		Proximity switch TL-B3	2
6		Key 4X4X15	1	25	H-315	Base	1
7		Screw HS M5X50	4	26		Screw HS M5X50	1
8	H-055	Spacer	1				
9	H-508	Pulley	1				
10		Belt 150L050	1				
11	H-057	Angle	1				
12	H-063	Spacer	1				
13	H-056	Slider	1				
14		Screw HB M5X8	2				
15		Screw HF M5X20	3				
16	H-310	Friction plate	2				
17	H-300	Dog-1	1				
18	H-301	Dog-2	1				
19	102038	Knob	2				



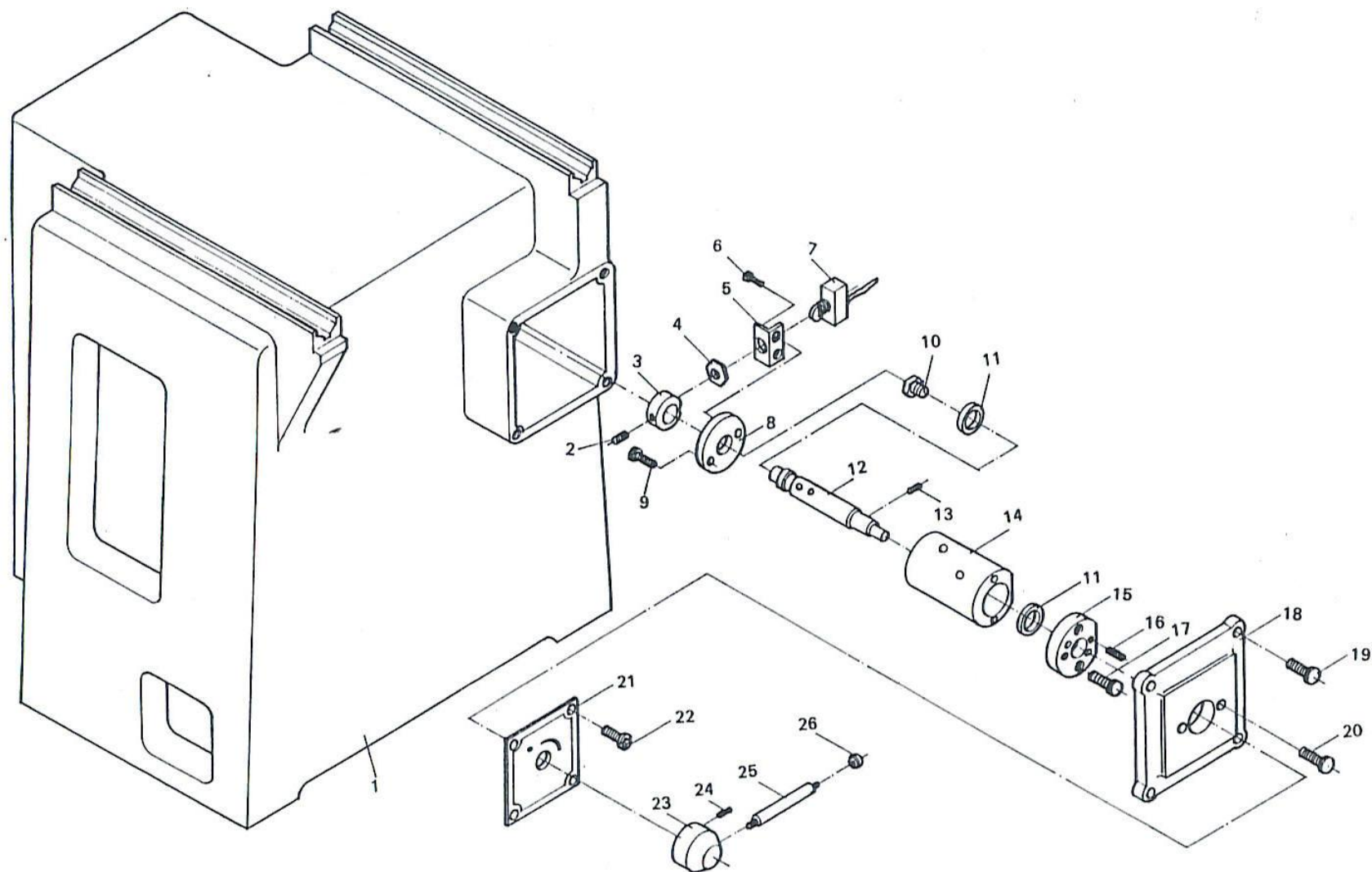
SPINDLE UNIT							
NO	PARTS NO	DESCRIPTION	QTY	NO	PARTS NO	DESCRIPTION	QTY
1		Motor 1.5hp 2p	1	18		Screw HSS M8X8 M8X6	12 6
2	102039	Spindle	1	19		Screw HS M6X25	4
3		Bearing 7307 7208B DB	2	20	102067	Bracket of wheel guard	1
3-1	102016	Spacer	1	21		Screw HSS M8X8	3
3-2	102017	Spacer	1	22		Steel ball	3
4		Bearing NN3006K	1	23	102036	Balancing weight	1
5	102050	Grease collar	1	24	102033	Flange	1
6		Screw HS M5X20	4	25		Grind wheel	1
7	102018	Rear collar	1	26	102034	Collar	2
8	102020	Spindle nut	1	27	102035	Flange nut	1
9	102023	Rotor nut	1	28	102037	Spindle nut	1
10	102015	Sleeve	1	29	102021	Bearing cover	1
11		Screw HH M6X50	1	30		Screw HS M5X15	4
12		Nut	2	31	102022	Bearing nut	1
13		Nut	2	32	102032-1/2	Wheel guard	1
14		Screw HS M8X20	6	33	102032-2/2	Front cover	1
15	102004	Slider	1	34		Knob	1
16		Taper pin	1	35	102058	Suction tube	1
17	102003	Head stock	1	36		Knob	1



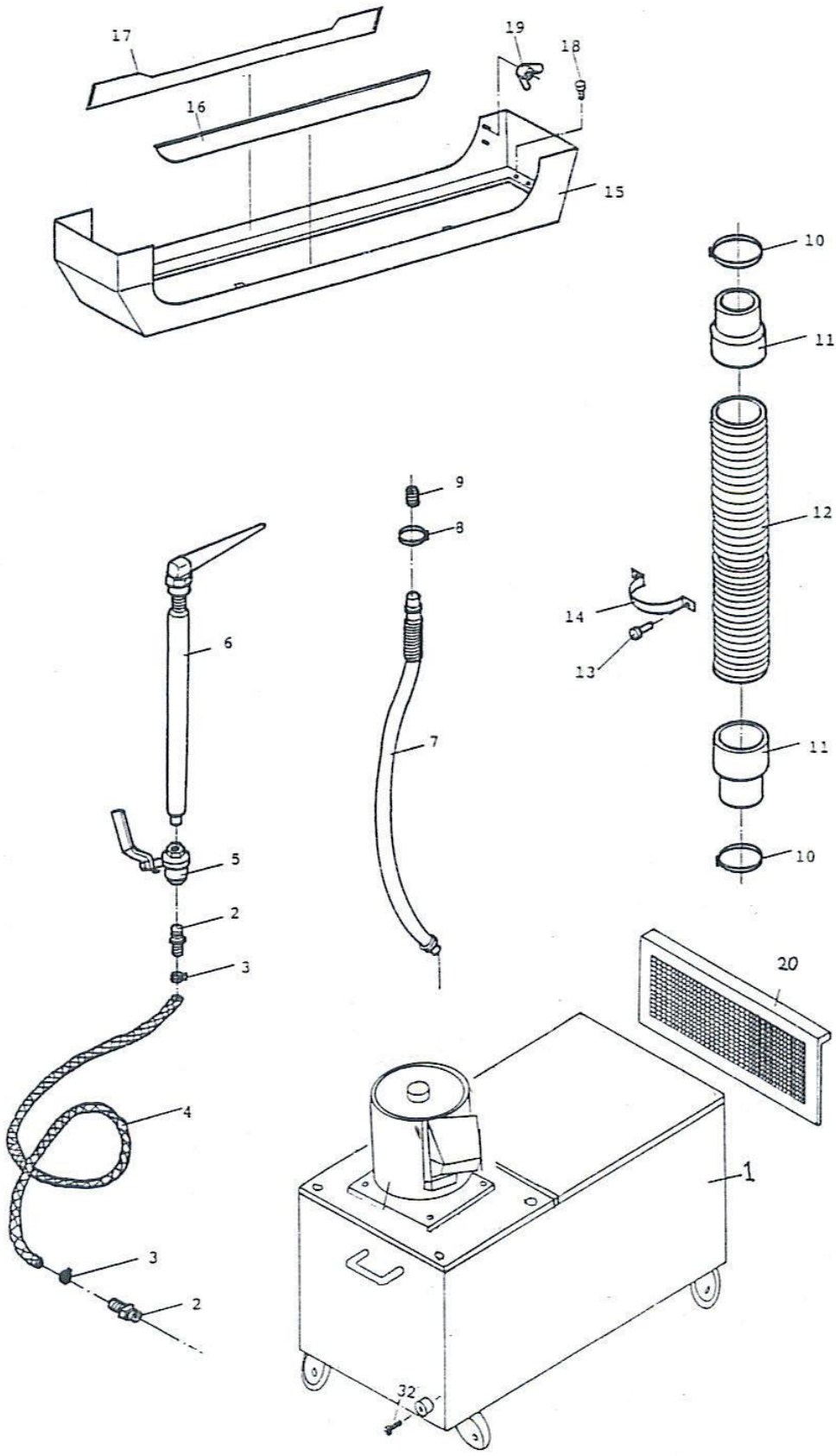
SPINDLE UNIT							
NO	PARTS NO	DESCRIPTION	QTY	NO	PARTS NO	DESCRIPTION	QTY
37		Screw HH M8X80	1				
38	102031	Top cover	1				
39		Screw HB M6X8	4				
40	102002R3	Top cover bracket	1				
41		HS M8X90	4				
42		Oil gage	1				
43	102005R1	Lead screw	1				
44	102007	Washer	1				
45	102006	Spiral gear	1				
46		Bearing 51106	2				
47	102008R1	Bearing base	1				
48	102009	NUT	2				
49	102068	Bearing base	1				
50		HS M5X8	3				
51		HS M5X30	3				
52	102030	Lead screw cover	1				
53		HS M6X15	3				
38	102031	Top cover	1				



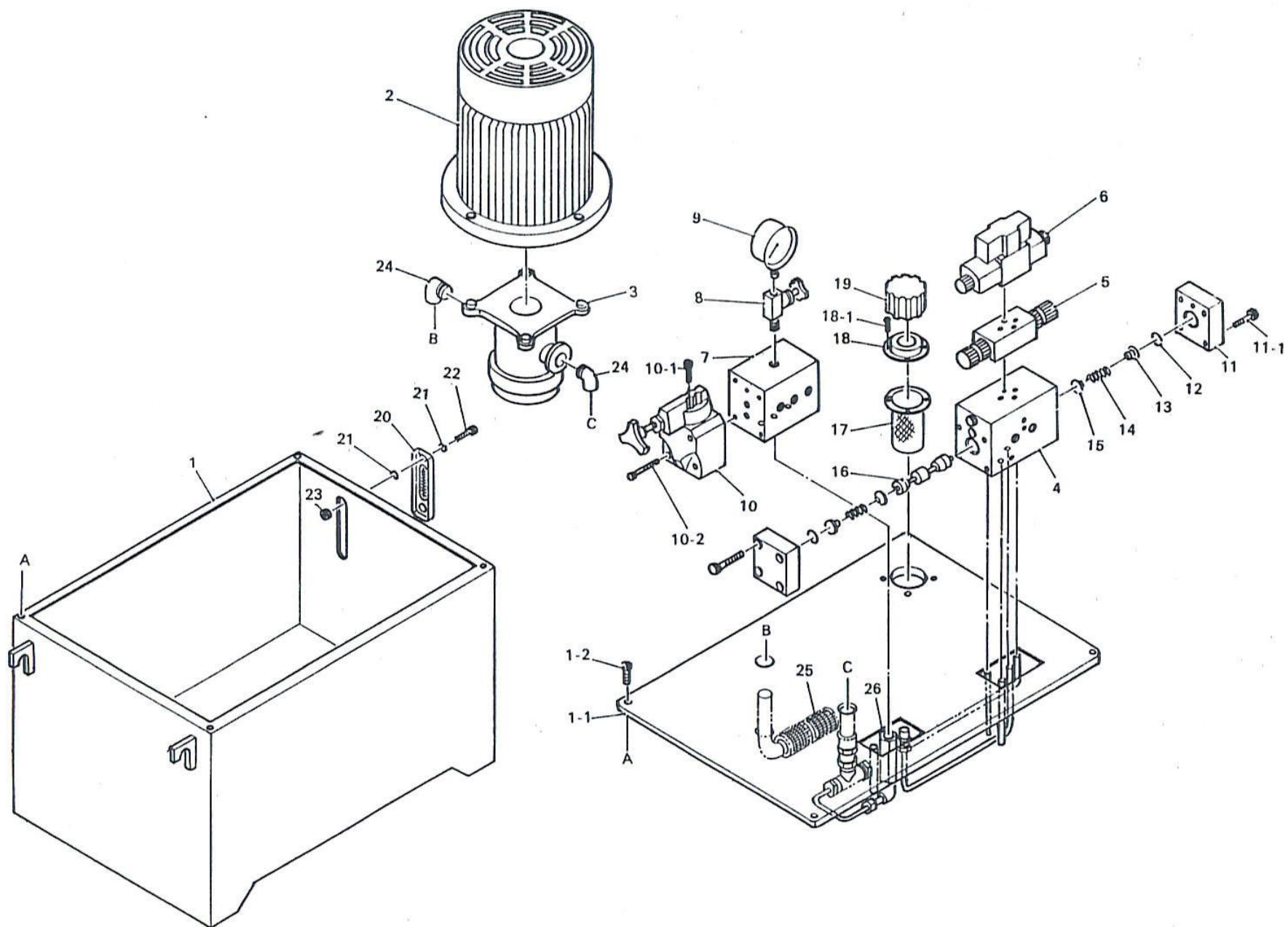
CONTROL BOX							
NO	PARTS NO	DESCRIPTION	QTY	NO	PARTS NO	DESCRIPTION	QTY
1	H-203	Base	1				
2	H-062-2/6	Power box	1				
3	H-062-4/6	Door	1				
4	H-062-5/6	Base plate	1				
5		Nut M5X3	5				
6	H-062-3/6	Base plate	1				
7		Nut M6X4	5				
8	H-061	Name plate	1				
9		Nut M3X6	6				



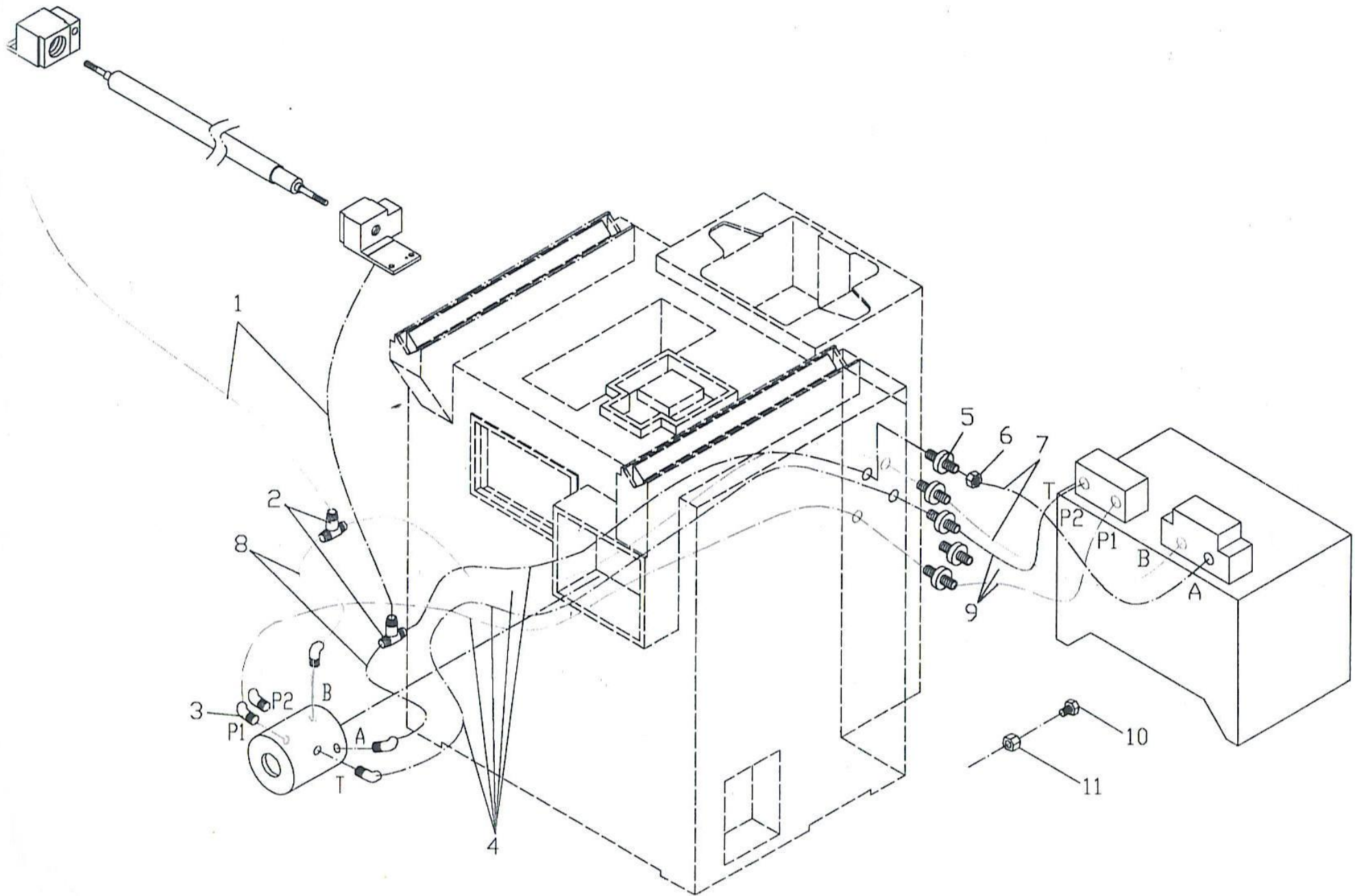
HYDRAULIC FEED MECHANISM							
NO	PARTS NO	DESCRIPTION	QTY	NO	PARTS NO	DESCRIPTION	QTY
1	H-203	Base	1	20		Screw HS M6X20	2
2		Screw HSS M6X6	1	21	307009	Name plate	1
3	307015	Dog ring	1	22		Screw HF M5X10	4
4		Micro switch nut	1	23	307006	Lever base	1
5	307014	Switch base	1	24		Screw HSS M8X6	1
6		Screw HS M5X6	2	25	307007	Lever	1
7		Micro switch	1	26		Knob	1
8	307005	Rear cover	1				
9		Screw HS M5X20	2				
10		Screw HH PT3/8"	1				
11		Oil seal LHS30	2				
12	H-024	Spool	1				
13		Screw HS M5X15	1				
14	307002	Valve body	1				
15	307004	Front cover	1				
16		Screw HSS M5X20	2				
17		Screw HS M5X20	2				
18	H-023	Name plate base	1				
19		Screw HS M6X20	4				



COOLANT AND DUST SUCTION SYSTEM							
NO	PARTS NO	DESCRIPTION	QTY	NO	PARTS NO	DESCRIPTION	QTY
1		Coolant tank	1	20	109001-4/4	Filter	1
2		Joint 3/8"X1/2"	2				
3		Hose clip	2				
4		Plastic tube 1/2"	1				
5		Valve 3/8"	1				
6		Nozzle	1				
7		Flexible tube	1				
8		Hose clip	1				
9		Joint	1				
10		Hose clip					
11		Tube joint	1				
12		Rubber hose	1				
13		Screw HS M5X8	2				
14		Fixing ring	1				
15	H-020-1/2	Splash guard	1				
16	H-021	Plastic plate	1				
17	H-020-2/2	Sheet metal plate	2				
18		Screw HS M5X15	4				
19		Butterfly nut M6	4				



HYDRAULIC POWER UNIT							
NO	PARTS NO	DESCRIPTION	QTY	NO	PARTS NO	DESCRIPTION	QTY
1	308001-A	Tank	1	15	308014	Spring fixer (B)	2
1-1	308001-B	Tank cover	1	16	308015	Valve body	1
1-2		Hex M8X12	4	17	308016	Filter	1
2	308002	Motor 2hp 6p	1	18	308017	Fixing ring	1
3	308003	Pump	1	18-1		HB M5X12	4
4	308004	Valve body	1	19	308018	Cover	1
5	308005	Tarry valve	1	20	308019	Oil level gauge	1
6	308006	Solenoid valve	1	21		O-ring	4
7	308007	Valve body	1	22		Hex M8X25	2
8	308008	Cock	1	23		HN M8	2
9	308009	Pressure gauge	1	24	308020	Elbow 1"X1"	2
10	308010	Relief valve	1	25	308021	Filter	1
10-1		HS M8X35	4	26	308022	Check valve	1
10-2		HS M12X65	4				
11	308011	Side cover	2				
11-1		HS M8X35	8				
12		O-ring p22	2				
13	308012	Spring fixer (A)	2				
14	308013	Spring $\phi 1.4 \times \phi 17 \times 370L$	2				



HYDRAULIC							
NO	PARTS NO	DESCRIPTION	QTY	NO	PARTS NO	DESCRIPTION	QTY
1		Hydr. pipe 1/2"1P x 1200L	2				
2		T Junction connector 1/2H	2				
3		90° Elbow connector 3/8T x 1/2H	5				
4		HYDR. PIPE 1/2"1P x 650L	5				
5		Adaptor 1/2"	5				
6		NUT 1/2"	5				
7		Hydr. pipe 1/2"1P x 600L	2				
8		Hydr. pipe 1/2"1P x 450L	2				
9		Hydr. pipe 1/2"1P x 1000L	3				
10		Male plug	5				
11		Female plug	5				