


SHARP

PARTS LIST

SV-8045(A)

2000-7711-102 B02 

Machine Type :

Machine Number :

Approve:

Drawn	Approve	Date	Edition	Note SUPPLIER Item No
		05.NOV.2007	B02	SV-8045(A) Parts List

SHARP INDUSTRIES, INC.

3501 CHALLENGER STREET

TORRANCE, CALIFORNIA 90503

TEL : (310) 370-5990 FAX : (310) 542-6162

<http://www.sharp-industries.com>

CONTENTS

1. BASIC MACHINE.....	1
1.1 Y Axis.....	1
1.2 X Axis.....	6
1.3 Z Axis.....	13
1.4 Spindle 40# (10000rpm).....	20
1.5 Spindle (#50).....	24
2. LUBRICATION AND AIR SYSTEM.....	32
2.1 Air and Lubricant Cabinet.....	32
2.1 Air and Lubricant Cabinet.....	36
2.2 Table Lubrication Schedule.....	37
2.3 Saddle And Spindle Head Lubrication Schedule.....	38
3. Suggested Spare Part List For After Service.....	39
3.1 Suggested Spare Part.....	39

MODIFICATION RECORD

DATE	PG	ORIGINAL	MODIFIED	ED	REMARK
2006/12/19	All		Add Suggested spare part	B01	
2007/11/05	All		Add suppliers and item no.	B02	

1. BASIC MACHINE

1.1 Y Axis				Note
Parts No.	☆	Pc	Description	SUPPLIER Item No
1		4	SCREW	M10x20
2	2000-2231-100	1	FLEXIBLE CONDUIT	RF40.20.150*2050
3		4	SCREW	M10x20
4		1	SERVO MOTOR	α22i /3000 QSY155D
5		4	SCREW	M12x35
6	2000-2108-100	☆ 1	Y AXIS COUPLING	Φ35XΦ25
7	2000-2142-100	1	BEARING NUT	YSF M30* P1.5
8	2000-2106-100	1	SPACER	2000-2106
9		6	SCREW	M8x25
10	2000-2109-100	1	BEARING HOLDER	2000-2109
11	B-30TAC62BSUC10 PN7B	☆ 4	BEARING	30TAC62BSUC10PN7B
12		39	SOCKET SET SCREW	M6x20
13	2000-2101-100	1	COLUMN	2000-2101
14		2	SCREW SELF TAPPING	24mm
15	2000-2223-100	1	FLEXBLE CONDUIT HOLDER	2000-2223
16	2000-2222-100	1	BRACKET	2000-2222
17		4	SCREW	M8x25
18	2000-2230-100	1	FLEXIBLE CONNECTER	RF58.1.100*1100

1.1 Y Axis				Note
Parts No.	☆	Pc	Description	SUPLINER Item No
19		2	SCREW	M5x16
20	5541-1063-100	2	DOG(OT)	5MC-1063
21		2	SCREW	M5x16
22	5541-1059-100	1	DOG(HOME)	5MC-1059
23	CRH-LC183-1240 CRH-LC193F-1240	1	H.D.H. SCALE (Y)	LC183-1240 LC193F-1240
24		15	SCREW	M5x25
25		2	SCREW	M5x16
26		1	O RING	P38
27	2000-2107-100	2	BUFFER BLOCK	2000-2107
28		4	SCREW	M6x20
29	2000-2110-100	1	BALL SCREW (Y)	R40-10B2-FDV-1427-1769-0.008 R40-10B2-FDVC-1427-1769-0.008
30		5	SCREW	M10x20
31		4	SCREW	M6x20
32		1	O RING	P38
33	2000-2104-100	1	Y BEARING HOUSING	2000-2104
34		2	PIN	Φ10x50L
35		4	SCREW	M14x45
36		1	SCREW	M6x16
37	2000-1125-100	2	CARRIAGE JOINT	T2

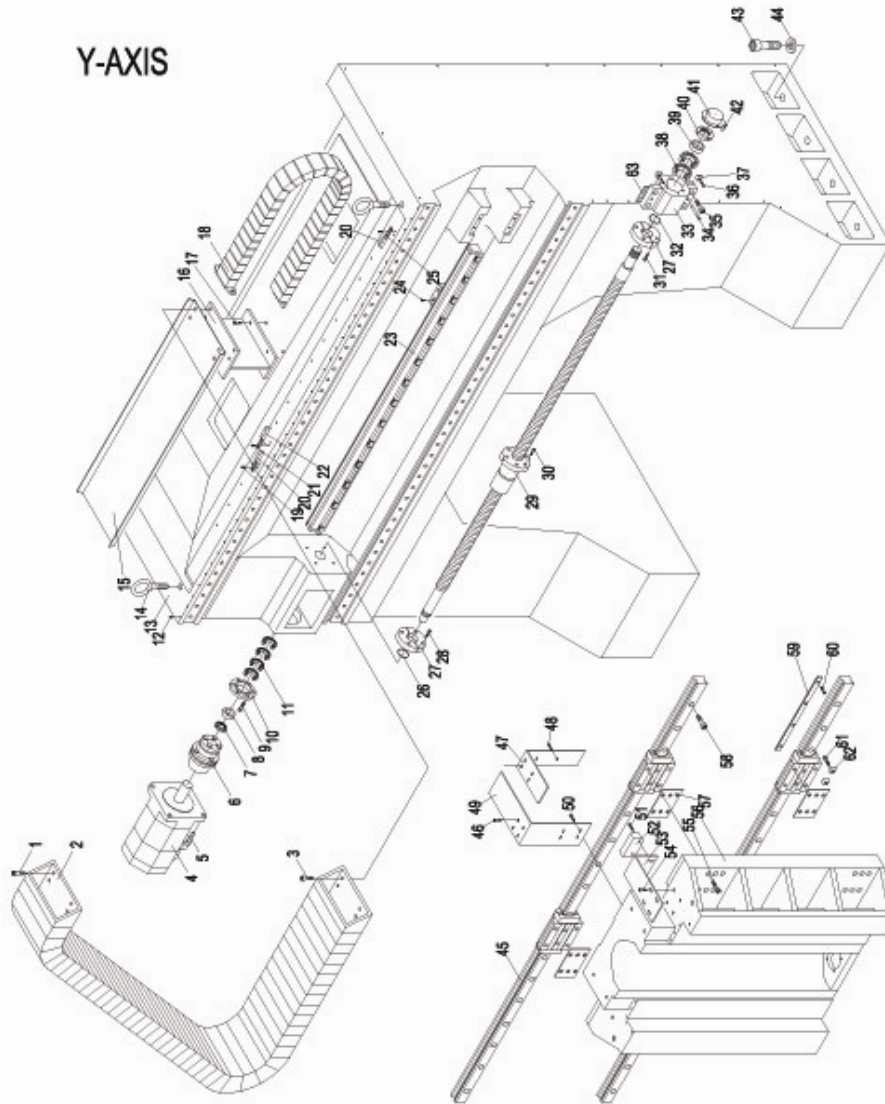
1.1 Y Axis				Note
Parts No.	☆	Pc	Description	SUPPLIER Item No
38	B-30TAC62BSUC10 PN7B	☆	2 BEARING	30TAC62BSUC10PN7B
39	2000-2105-100		1 SPACER	2000-2105
40	2000-2142-100		1 BEARING NUT	YSF M30*P1.5
41	2000-1003-100		1 COVER	2000-1003
42			4 SCREW	M5x10
43			16 SCREW	M24x90
44	1500-2006-100		16 WASHER	1500-C006
45	2000-2144-100		2 LINEAR RAIL	MR45-D2-2150-G1-V3
46			4 SCREW	M6x12
47	2000-2156-100		1 READER SUPPORTER	2000-2156
48			4 SCREW	M5x40
49	2000-2155-100		1 READER SUPPORTER	2000-2155
50			4 SCREW	M6x16
51			2 SCREW	M6x20
52	EA12-0602-010	☆	1 LIMITED SWITCH	SN02D12-502
53	2000-2157-100		1 LIMIT SWITCH BRACKET	2000-2157
54			4 SCREW	M8x16
55			24 SCREW	M10x55
56	2000-2102-100		1 SADDLE	2000-2102
57	2000-2113-100		4 MEDIUM	2000-2113



1.1 Y Axis					Note
Parts No.		☆ Pc	Description		SUPLINER Item No
58		78	SCREW		M12x45
59	2000-1014-100	6	PRESS CAKE		2000-1014
60		4	SCREW		M6x20
61		2	SCREW		M6x25
62	2000-1125-100	4	CARRIAGE JOINT		T3
63	2000-2379-100	2			2000-2379

☆ : Suggested Spare Part

Y-AXIS



SHARP

1.2 X Axis					Note
Parts No.		☆	Pc	Description	SUPPLIER Item No
1			4	SCREW BUTTON HEAD	M6x10
2	2000-1029-100	☆	1	6 STAGE PROTECTOR	2000-1029
3			10	SCREW BUTTON HEAD	M6x10
4			2	SCREW	M6x20
5	4850-2086-100	☆	2	DUSTER PLUNGERS	DPB-1516
6	2000-1002-100		1	TABLE	2000-1002
7			48	SCREW	M12x65
8			32	POSITIONING KEY	Φ10
9	1000-2156-100		2	DOG (OT) BASE	1000-C156
10			2	SCREW BUTTON HEAD	M5x16
11	5541-1063-100		2	DOG (OT)	5MC-1063
12	2000-1013-100		8	MEDIUM	2000-1013
13	2000-1127-100		2	LINEAR RAIL	MR45-B4-3989.5-G1-V3
14			152	SCREW	M12x45
15	V43-2047-100		8	CARRIAGE JOINT	T3
16			8	SCREW	M8x25
17			4	SCREW	M6x16
18	2000-1014-100		22	PRESS CAKE	2000-1014
19	2000-1027-100		1	X LEFT COVER LEFT SUPPORTER	2000-1027
20			4	SCREW	M8x20

SHARP

1.2 X Axis					Note
Parts No.		☆	Pc	Description	SUPPLIER Item No
21	1500-2096-100		4	HOOK	1500-2096
22			4	SCREW	M20x60
23			4	SCREW	M20x60
24	2000-1028-100		1	X LEFT COVER RIGHT SUPPORTER	2000-1028
25			4	SCREW	M8x20
26	2000-1001-100		1	BED	2000-1001
27	2000-1003-100		1	COVER	2000-1003
28			4	SCREW	M5x16
29	2000-1124-100		1	BEARING NUT	YSF M45*P1.5
30	2000-1005-100		1	SPACER	2000-1005
31	B-45TAC75BSUC10PN7B	☆	2	BEARING	45TAC75BSUC10PN7B
32	2000-1125-100		2	CARRIAGE JOINT	T2
33			1	SCREW	M6x16
34			4	SCREW	M14x45
35			2	PIN	Φ10x50L
36	2000-1004-100		1	X BEARING HOUSING	2000-1004
37			1	O RING	P60
38	2000-1006-100		2	BUFFER BLOCK	2000-1006
39			4	SCREW	M6x20
40	2000-2284-100		1	RAIL SUPPORTER	2000-2284

1.2 X Axis				Note
Parts No.	☆	Pc	Description	SUPPLIER Item No
41	5541-1059-100		1 DOG (HOME)	5MC-1059
42			2 SCREW BUTTON HEAD	M5x16
43	2000-2154-100		1 X SCALE READER SUPPORTER	2000-2154
44	2000-1115-100		1 TUBE	FBC-624
45	2000-1397-100		2 FLEXIBLE CONNECTOR	13*19*2500L
46			10 SCREW BUTTON HEAD	M6x10
47	2000-1030-100	☆	1 7 STAGE PROTECTOR	2000-1030
48			4 SCREW BUTTON HEAD	M6x10
49	2000-1642-100 2000-1010-100		1 X BALL SCREW	R63-12B2-FDV-2452-2736-0.008 R63-10B3-FDV-2452-2736-0.008
50			5 SCREW	M10x25
51			4 SCREW	M6x20
52			1 O RING	P60
53			4 SCREW	M8x20
54	2000-1026-100		1 X RIGHT COVER RIGHT SUPPORTER	2000-1026
55	2000-1020-100		1 BEARING HOUSING	2000-1020
56			6 SCREW	M10x40
57			2 PIN	Φ10x50L
58	B-45TAC75BSUC10PN7B	☆	4 BEARING	45TAC75BSUC10PN7B
59	2000-1008-100		1 BEARING HOLDER	2000-1008
60			6 SCREW	M8x25

1.2 X Axis					Note
Parts No.	☆	Pc	Description		SUPPLIER Item No
61	2000-1005-100		1 SPACER		2000-1005
62	2000-1124-100		1 BEARING NUT		YSF M45*P1.5
63	2000-1009-100	☆	1 X AXIS COUPLING		Φ35XΦ40
64	2000-1019-100		1 MOTOR BRACKET		2000-1019
65			4 SCREW		M12x35
66			2 PIN		Φ8x40L
67			4 SCREW		M12x35
68			1 SERVO MOTOR		α30i /3000 QSY190F
69			2 O RING		G110
70	2000-2164-100		2 OIL SEAL		TC-60x100x10
71	2000-2131-100		2 SPIRAL MOTOR BRACKET		2000-2131
72			8 SCREW		M10x30
73	B-6010VV		2 BEARING		6010VV
74			2 LOCK RING		R-80
75			2 LOCK RING		S-50
76			8 SCREW		M10x30
77	EA38-0004-300		2 REDUCTION MOTOR		1/2HP4P220/380V 1:9
78			4 SCREW		M8x20
79	2000-1025-100		1 X COVER LEFT SUPPORTER		2000-1025

1.2 X Axis					Note
Parts No.		☆	Pc	Description	SUPPLIER Item No
80	5541-2912-100		16	AN07 LOCK NUT	5MC-2912
81	2000-1021-100		16	LEVELING ADJ. BOLT	2000-1021
82	2000-1219-100		2	CHIP AUGER	2000-1219
83	CRH-LC183-2240 CRH-LC193F-2240		1	SCALE	LC183-2240 LC193F-2240
84	2000-2153-100		12	SCREW	2000-2153
85			24	SCREW	M8x20
86			2	SCREW	M5x20
87	EA12-0602-010	☆	1	LIMIT SWITCH	EA12-0602-010
88	1000-2060-100		1	X LIMIT SWITCH SUPPORTER	1000-C060
89			2	SCREW	M6x12
90			2	WASHER	M6
91			2	SCREW	M6x20
92			4	WASHER	M6
93			2	NUT	M6
94	1000-2060-100		1	DOG HOLDER	1000-C060
95			24	SCREW	M5x25
96			4	SCREW	M6x16
97	1500-2116-100		4	KEY	20X13X100L
98			8	PIN	Ø6x30
99	1060-2186-100		10	LEVELING PAD	1060-C186

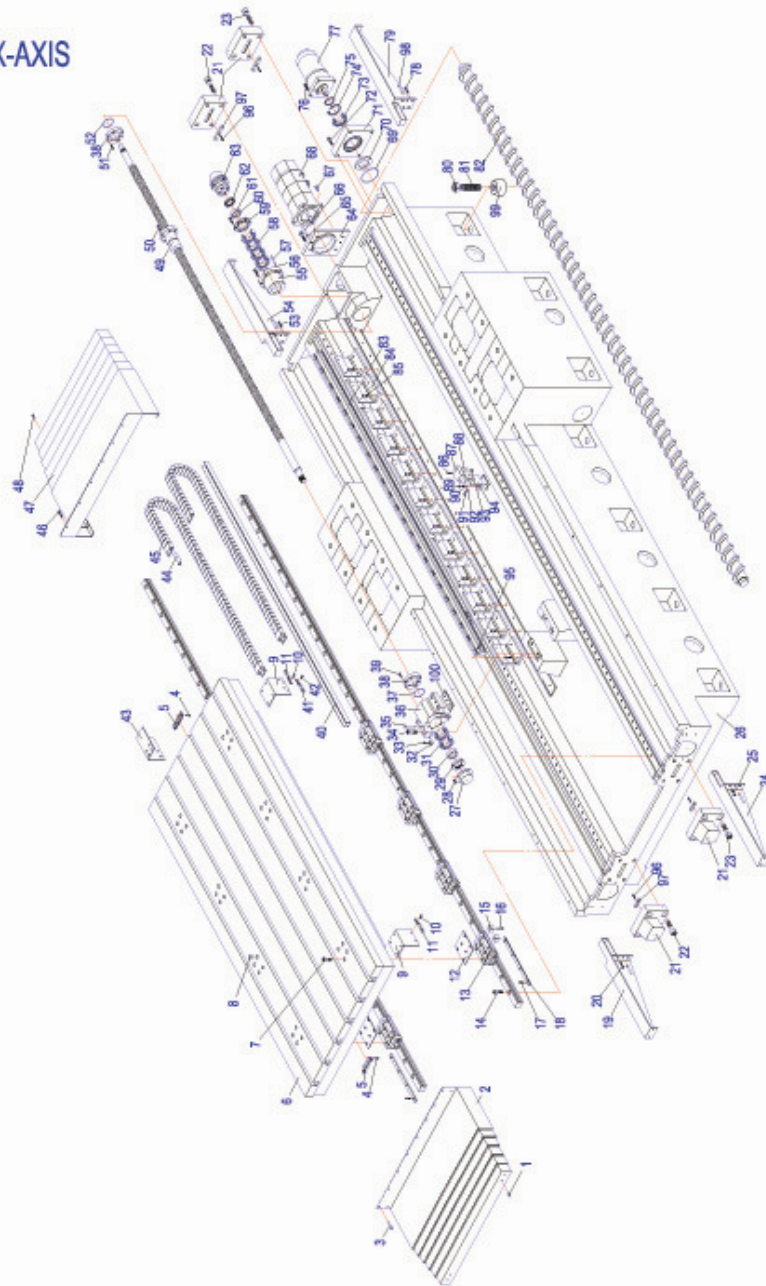
SHARP

1.2 X Axis					Note
Parts No.		☆	Pc	Description	SUPLINER Item No
100	2000-2378-100		2		2000-2378

☆ : Suggested Spare Part

SHARP

X-AXIS



1.3 Z Axis					Note
Parts No.		☆	Pc	Description	SUPPLIER Item No
1	F109-61		2	CONNECTOR	1/2PT*3/4H
2	F109-62		1	90-CONNECTOR	1/2PT*1/2PT
3			2	SCREW	M6x50
4	1000-2825-100		4	CONNECTOR	1000-C625
5	F109-77		3	90-CONNECTOR	1/2PT*3/8H
6	F109-80		2	CONNECTOR	1/2PT*3/8H
7	2000-2221-100		1	BRACKET	2000-2221
8	5541-2647-100	☆	1	DUSTER PLUNGERS	DPB-1216
9			6	SCREW	M10x25
10	2000-2301-100		1	SPINDLE FLANGE	2000-2301
11			10	SCREW	M5x25
12	CRH-LC183-0840 CRH-LC193F-0840		1	SCALE	LC183-0840 LC193F-0840
13	5541-1063-100		2	DOG (OT)	5MC-1063
14			2	SCREW	M5x16
15			2	SCREW	M5x16
16	5541-1059-100		1	DOG (HOME)	5MC-1059
17			2	SCREW	M5x16
18			1	O RING	G55
19	2000-2216-100		4	FLANGE	2000-2216
20			4	SCREW	M6x20

1.3 Z Axis					Note
Parts No.	☆	Pc	Description		SUPLINER Item No
21		4	SCREW		M6x20
22	2000-2212-100	1	BEARING HOUSING		2000-2212
23		1	LOCK RING		S-30
24	B-30TAC62BSUC10PN 7B	1	BEARING		30TAC62BSUC10PN7B
25	2000-2211-100	1	BUFFER BLOCK		2000-2211
26		4	SCREW		M4x16
27	2000-1125-100	2	CARRIAGE JOINT		T2
28		2	SCREW		M6x16
29		2	PIN		Φ10x50L
30		4	SCREW		M12x35
31	2000-2280-100	1	BALL SCREW NUT BRACKET		2000-2280
32	2000-2159-100	1	READER SUPPORTER		2000-2159
33	2000-2285-100	1	Z BALL SCREW		R50-10B2-FDV-999-1269-0008 R50-10B2-FDVC-999-1269-0008
34		5	SCREW		M10x25
35		4	SCREW		M6x20
36	2000-2209-100	1	BUFFER BLOCK		2000-2209
37	5541-1034-100	4	GIB ADJUSTING SCREW		5MC-1034
38	2000-2145-100	2	GIB		2000-2145
39	2000-2146-100	1	(LEFT)		2000-2146
40	EA12-0602-010	☆	1 LIMITED SWITCH		SN02D12-502

SHARP

1.3 Z Axis					Note
Parts No.	☆	Pc	Description		SUPLINER Item No
41		2	SCREW		M6x20
42		7	SCREW		M12x60
43	2000-2147-100	1	(RIGHT)		2000-2147
44		7	SCREW		M12x60
45	2000-2122-100	1	WIPER		2122-100
46		7	SCREW BUTTON HEAD		M5x12
47	2000-2123-100	1	WIPER		2000-2123
48		7	SCREW BUTTON HEAD		M5x12
49	2000-2276-100	1	BREAKER COVER		2000-2276
50		4	SCREW		M6x12
51		6	SCREW		M6x50
52	2184-3449-100	1	BREAKER		BXL-1210V90D24
53	2000-2282-100	1	BREAKER BASE		2000-2282
54		4	SCREW		M10x20
55		4	SCREW		M6x20
56	2000-2274-100	1	CONNECTOR		2000-2274
57		4	SCREW		M6x25
58	2000-2273-100	1	FLANGE		2000-2273
59	2000-2227-100	2	RING		PL 25x30
60	2000-2203-100	1	TIMING PULLEY		2000-2203

SHARP

1.3 Z Axis					Note
Parts No.	☆	Pc	Description		SUPPLIER Item No
61	4850-2021-100	1	LOCK NUT		YSR M35 P1.5
62	2000-2208-100	1	SPACER		2000-2208
63		1	OIL SEAL		TC-48x62x6
64		6	SCREW		M8x16
65	850-2013-100	1	Z BEARING HOLDER		850-C013
66	B-35TAC72BSUC10PN 7B	4	BEARING		35TAC72BSUC10PN7B
67		6	SCREW		M10x20
68		2	PIN		Φ10x50
69	2000-2151-100	1	BEARING HOUSING		2000-2151
70	2000-2132-100	1	MOTOR HOUSING		2000-2132
71		4	SCREW		M12x40
72		7	SCREW BUTTON HEAD		M5x12
73	2000-2118-100	1	WIPER		2000-2118
74	2000-2150-100	1	Z MOTOR HOUSING		2000-2150
75		4	SCREW		M12x40
76		2	PIN		Φ10x50L
77	2000-2124-100	1	ADJUSTING BLOCK		2000-2124
78		2	SCREW		M8x12
79		2	SCREW BUTTON HEAD		M5x12
80		1	SCREW		M6x20

SHARP

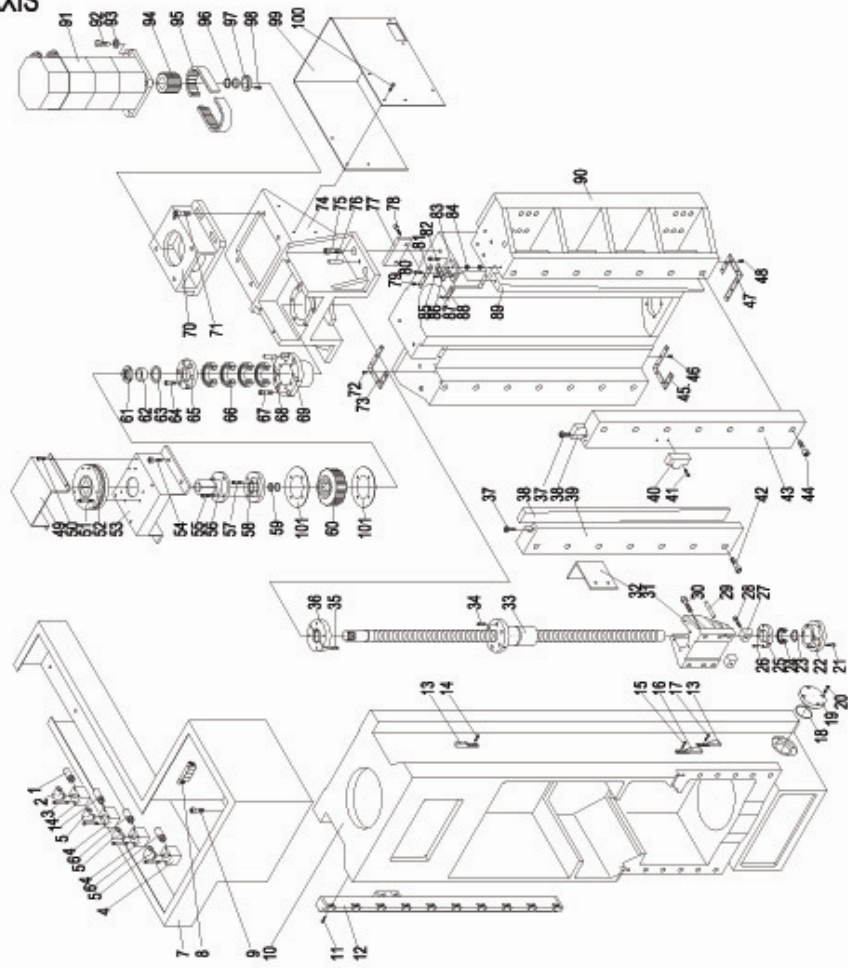
1.3 Z Axis					Note
Parts No.	☆	Pc	Description	SUPPLIER Item No	
81	2000-2120-100		1 WIPER		2120-100
82			1 SCREW		M8x60
83	2000-2117-100		1 FIXED PLATE		2000-2117
84			2 NUT		M8
85			2 SCREW BUTTON HEAD		M5x12
86	2000-2121-100		1 WIPER		2121-100
87			2 SCREW BUTTON HEAD		M5x12
88	2000-2119-100		1 WIPER		2119-100
89	2000-2181-100	☆	1 Z AXIS GIB		2181-100
90	2000-2102-100		1 SADDLE		2102-100
91			1 SERVO MOTOR		α30i /3000(with Brake) QSY190CB
92			4 SCREW		M12x35
93			4 WASHER		M12
94	2000-2135-100		1 MOTOR TIMING PULLEY(Z)		2000-2135
95	TB-840-8M-40	☆	1 TIMING BELT		840-8M-40
96			2 RING HOLDER		TLK300 35x40x7
97	850-2005-100		1 HOLDER		96212
98			4 SCREW		M6x25
99	2000-2229-100		1 FLEXIBLE CONNECTOR BASE		2000-2229

SHARP

1.3 Z Axis					Note
Parts No.	☆	Pc	Description	SUPPLINER Item No	
100		6	SCREW	M6x16	
101	2000-2294-100	2	FLANGE	2000-2294	

☆ : Suggested Spare Part

Z-AXIS



SHARP

1.4 Spindle 40# (10000rpm)					Note
Parts No.	☆	Pc	Description		SUPPLIER Item No
1		4	SCREW		M10x40
2		1	PU PIPE		Ø10xØ6.5x350L
3	5541-3284-100	1	ONE TOUCH		PL10-02
4		1	OIL CUP		W-1000
5		1	PU PIPE		Ø8xØ5x500L
6		1	CONNECTOR		3/8x1/4
7	5541-3291-100	1	ONE TOUCH		PD8-02
8		1	PU PIPE		Ø8xØ5x1200L
9	F109-79-1	1	CONNECTOR		1/2PT*3/8H
10		1	AIR PIPE		3/8x1200L
11	V43-1108-100	1	AIR CYLINDER BASE		V43-H108
12		1	PU PIPE		Ø8xØ5x9500L
13	5541-3284-100	1	ONE TOUCH		PL10-02
14		1	CONNECTOR		3/8x1/4
15	5541-3262-100	1	ONE TOUCH		PL8-02
16	5541-3324-100	2	ONE TOUCH		PL8-01
17		3	PU PIPE		Ø8xØ5x1100L
18		4	SCREW		M6x25
19	1200-1162-100	1	VALVE		LS02A
20	5541-3262-100	1	ONE TOUCH		CTL8-02

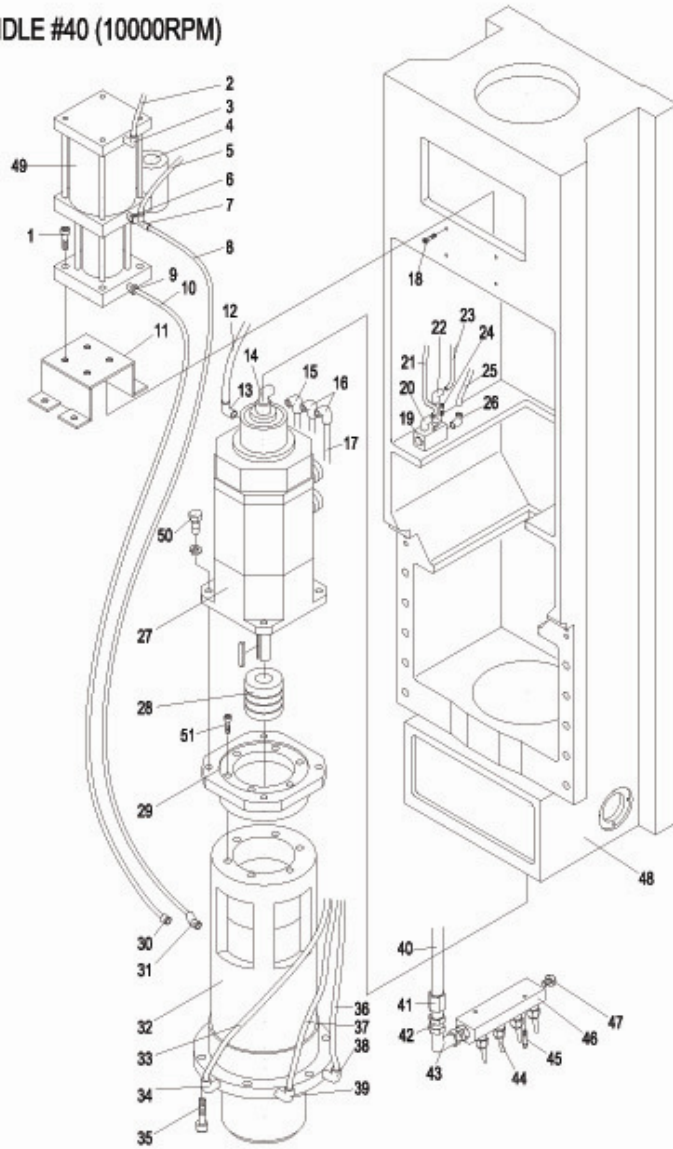
1.4 Spindle 40# (10000rpm)					Note
Parts No.	☆	Pc	Description	SUPPLIER Item No	
21		1	PU PIPE	Ø8xØ5x9500	
22	F109-76-3	1	90°CONNECTOR	1/4PTx1/4H	
23	1500-2206-100	1	AIR PIPE	1/4PT	
24		2	SCREW	M5x55	
25		1	AIR PIPE	3/8"x1400L	
26		1	90°CONNECTOR	1/4PTx3/8H	
27		1	SPINDLE MOTOR	α22i /10000 α15i /10000 αT15i /15000 QAN200UH /12000 QAN260M /10000 QAN260UH /10000	
28		1	SPINDLE MOTOR CONNECTOR	•••AS OPTION	
29	2000-2376-100	1	CONNECT PLATE	2000-2376-100	
30	5541-3261-100	1	ONE TOUCH	PC8-02	
31		1	135°CONNECTOR	1/4PTx3/8H	
32		1	SPINDLE	•••AS OPTION	
33		1	AIR PIPE	3/8x2300L	
34		1	ONE TOUCH	1/4PTx3/8H	
35		6	SCREW	M14x45	
36		1	AIR PIPE	3/8x2400L◆	
37		1	PU PIPE	Ø8xØ5x1050L	
38		1	ONE TOUCH	1/4PTx3/8H	
39	5541-3262-100	1	ONE TOUCH	CTL802	

SHARP

1.4 Spindle 40# (10000rpm)					Note
Parts No.	☆	Pc	Description	SUPPLINER Item No	
40		1	AIR PIPE	1/2x2100L	
41		1	CONNECTOR	1/2PTx1/2H	
42		1	CONNECTOR	1/2PTx1/2PT	
43		1	90-CONNECTOR	1/2PTx1/2PT	
44	1000-1004-100	4	SPRINKLE-NOZZLE	1/4"	
45		2	SCREW	M5x45	
46	1000-2364-100	1	DISTRIBUTOR	1/4"	
47		1	STOPPER	1/2PT	
48	2000-2301-100	1	SPINDLE FLANGE	2000-2301	
49	2000-2293-200	1	BOOSTER	W-1000	
50		4	SCREW	M12x30	
51		6		M12x65	

☆ : Suggested Spare Part

SPINDLE #40 (10000RPM)



SHARP

1.5 Spindle (#50)					Note
Parts No.	☆	Pc	Description		SUPPLIER Item No
1	1500-1009-100		1	BEARING NUT	YSK-M100X2.0
2	1500-1008-100		1	DISTANCE COLLAR	1500-H008
3	B-100BNC10TYDBB LP4		2	BEARING 6000RPM	100BNC10TYDBBLP4
	B-7020CTYDBC7P4		2	BEARING 4000RPM	7020CTYDBC7P4
4	1500-1095-100		1	BEARING OUTER SPACER 6000RPM	1500-H095
	1500-1007-100		1	BEARING OUTER SPACER 4000RPM	1500-H007
5	1500-1094-100		1	BEARING INNER SPACER 6000RPM	1500-H094
	1500-1006-100		1	BEARING INNER SPACER 4000RPM	1500-H006
6	B-110BNC10TYDBB CAP4		2	BEARING 6000RPM	110BNC10TYDBBCAP4
	B-NN3022TCCG10P 4		1	BEARING 4000RPM	NN3022TCCG10P4
7			1	OIL LEAD PIPE	1/4PTx90L
8			1	90°CONNECTOR	1/4PT
9	1500-1005-100		1	SPACER	1500-H005
10			2	KEY	10x8x45
11	1500-1003-100		1	SPINDLE	1500-H003
12	1200-1126-100		2	POSITIONING KEY BT	1200-H126
	1500-1072-100		2	POSITIONING KEY DIN & CAT	1500-H072
13			2	SCREW	M12x16
14			1	O RING	G170
15	1500-1004-100		1	BEARING HOLDER	1500-H004

SHARP

1.5 Spindle (#50)				Note
Parts No.	☆	Pc	Description	SUPPLIER Item No
16		6	SCREW	M8x25
17	1500-1011-100	1	BEARING NUT	YSK-M90XP2.0
18	1500-1012-100	1	DISTANCE COLLAR	1500-H012
19		1	O RING	G80
20	1500-1076-100	1	SPACER	1500-H076
21		1	O RING	G95
22	1500-1042-100	1	SPINDLE GEAR	1500-H042
23		1	O RING	G95
24	1500-1111-100	1	GEAR	1500-H111
25	1500-1114-100	1	CIRCUMROTATION PLATE	1500-H114
26		6	SCREW	M6x20
27	1500-1113-100	1	ANTI LABYRINTH ISOLATOR	1500-H113
28		1	O RING	G150
29	1500-1112-100	1	LABYRINTH ISOLATOR	1500-H112
30		1	O RING	G195
31		6	SCREW	M8x16
32	1500-1014-100	1	BEARING HOLDER	1500-H014
33		1	O RING	G145
34	1500-1011-100	1	BEARING NUT	YSK-M90XP2.0
35	1500-1010-100	1	DISTANCE COLLAR	Ø 90-Ø107-10T

SHARP

1.5 Spindle (#50)				Note
Parts No.	☆	Pc	Description	SUPPLIER Item No
36	B-NN3018AS-M-SP	1	BEARING	NN3018AS-M-SP
37		2	O RING	G200
38	1500-1002-100	1	SPINDLE FLANGE	1500-H002
39		6	SCREW	M14x35
40		1	LOCK RING	R55
41	1500-1024-100	1	DISK SPRING HOLDER	1500-H024
42	1500-1023-100	1	STOP RING	1500-H023
43		1	O RING	P20
44	1500-1022-100	1	WASHER	1500-H022
45		1	O RING	P39
46		89	DISK SPRING	Ø25xØ50x3t-89
47	1500-1098-100	1	CONNECTING LINK	1500-H098
48		1	GIB HOLDER	•••AS OPTION
49		12	SCREW	M14x45
50	2000-2301-100	1	SPINDLE FLANGE	2000-2301
51	2000-2302-100	1	GEAR BOX	2000-2302
52	F108-PH4-1	2	CONNECTOR	PH4-1
53	2000-2304-100	1	HOUSING PLATE	2000-2304
54		1	OIL GAUGE	1/4"PTx3"L
55		10	SCREW (FLAT HEAD)	M10x16
56	1500-1046-100	1	CYLINDER	DITA40X32.5X65

SHARP

1.5 Spindle (#50)				Note
Parts No.	☆	Pc	Description	SUPPLIER Item No
57		4	SCREW	M6x12
58	1500-1047-100	1	CYLINDER FLANGE	1500-H047
59		1	LOCK RING	R90
60		1	LOCK RING	S40
61	B-6308ZZ	1	BEARING	6308ZZ
62	1500-1048-100	1	SPEED CHANGE GEAR SHAFT	1500-H048
63		1	LOCK RING	R125
64		1	LOCK RING	S80
65	B-16016	1	BEARING	16016
66	1200-1136-100	1	GEAR CHANGE DEVICE	1200-H136
67		1	LOCK RING	S80
68	1500-1040-100	1	SPEED CHANGE GEAR	1500-H040
69	1500-1039-100	1	SPEED CHANGE GEAR	1500-H039
70		1	KEY	10x8x25
71	B-6008ZZ	1	BEARING	6008ZZ
72		4	SCREW	M14x35
73		4	WASHER	Ø14
74		1	SPINDLE MOTOR	α22i /10000 α15i /10000 QAN260M /10000
75		1	KEY	14x10x85

SHARP

1.5 Spindle (#50)					Note
Parts No.	☆	Pc	Description		SUPPLINER Item No
76	1500-1044-100	1	GEAR CENTER BAR		1500-H044
77		2	SCREW		M8x16
78		1	KEY		14x9x85
79		1	KEY		10x8x25
80	1500-1045-100	1	SPINDLE GEAR		1500-H045
81		1	LOCK RING		S45
82		2	KEY		10x8x25
83	1500-1043-100	1	OIL SPLASH RING		1500-H043
84	B-6208Z	1	BEARING		6208Z
85	1200-1157-100	1	CYLINDER		3T*13L
86		4	SCREW		M10x40
87	1500-1063-100	1	BUSAING		1500-H063
88	1200-1026-100	1	PLATE HOLDER DOWN		1200-H026
89	1060-1008-100	1	C.T.S. CONNECTOR		ESX20M-6509Y
90		4	SCREW		M4x10
91		4	SCREW		M5x16
92	1200-1025-100	1	FLANGE		1200-H025
93		2	RING HOLDER		TLK300-Ø17xØ21x6.3
94	1500-1099-100	1	SLIDING HOLDER		1500-H099
95		4	SCREW		M10x40

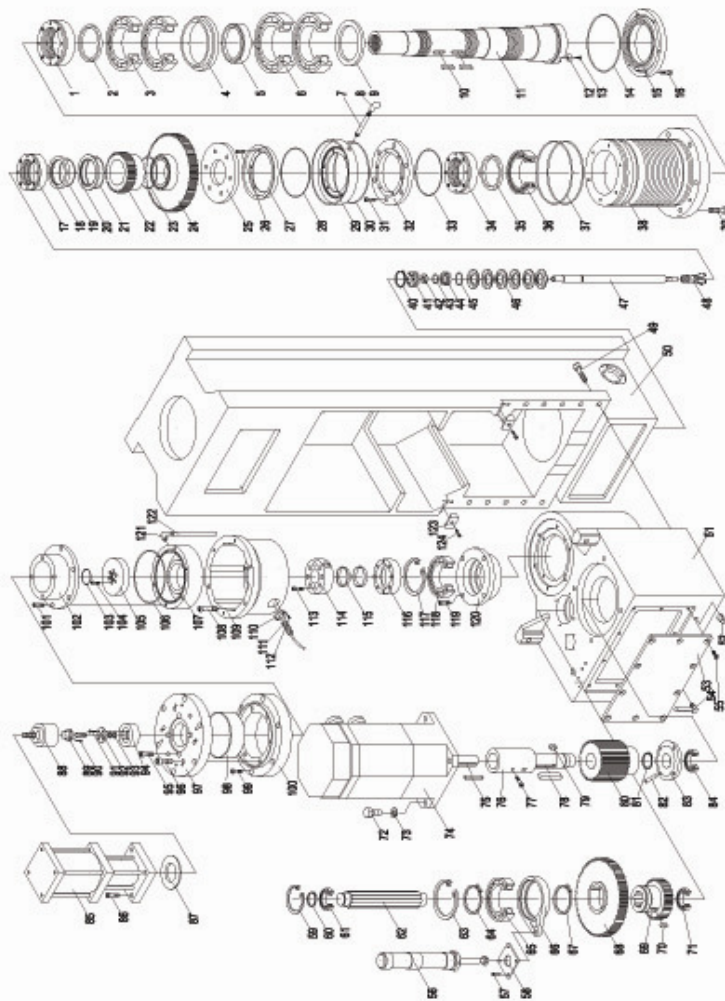
SHARP

1.5 Spindle (#50)					Note
Parts No.	☆	Pc	Description		SUPPLINER Item No
76	1500-1044-100		1 GEAR CENTER BAR		1500-H044
77			2 SCREW		M8x16
78			1 KEY		14x9x85
79			1 KEY		10x8x25
80	1500-1045-100		1 SPINDLE GEAR		1500-H045
81			1 LOCK RING		S45
82			2 KEY		10x8x25
83	1500-1043-100		1 OIL SPLASH RING		1500-H043
84	B-6208Z		1 BEARING		6208Z
85	1200-1157-100		1 CYLINDER		3T*13L
86			4 SCREW		M10x40
87	1500-1063-100		1 BUSAING		1500-H063
88	1200-1026-100		1 PLATE HOLDER DOWN		1200-H026
89	1060-1008-100		1 C.T.S. CONNECTOR		ESX20M-6509Y
90			4 SCREW		M4x10
91			4 SCREW		M5x16
92	1200-1025-100		1 FLANGE		1200-H025
93			2 RING HOLDER		TLK300-Ø17xØ21x6.3
94	1500-1099-100		1 SLIDING HOLDER		1500-H099
95			4 SCREW		M10x40

SHARP

1.5 Spindle (#50)					Note
Parts No.	☆	Pc	Description		SUPPLIER Item No
116	1500-1017-100		1 HOLDER		1500-H017
117			1 LOCK RING		R115
118	B-6015ZZ		1 BEARING		6015ZZ
119			4 SCREW		M8x25
120	1500-1016-100		1 BEARING HOUSING		1500-H016
121	1500-1081-100		1 ONE TOUCH		PL08-01
122			1 PU PIPE		Ø8xØ5x700L
123	2000-1125-100		2 CARRIAGE JOINT		T2
124			2 SCREW		M6x12
☆ : Suggested Spare Part					

SPINDLE (#50)



2. LUBRICATION AND AIR SYSTEM

2.1 Air and Lubricant Cabinet					Note
Parts No.	☆	Pc	Description		SUPPLIER Item No
1		4	SCREW		M4x30
2		8	WASHER		M4
3	EA12-1001-010	2	LIMIT SWITCH		ZC-Q55
4		4	NUT		M4
5		1	PU PIPE		Ø10xØ6.5x350L
6	5541-3284-100	1	ONE TOUCH		PL10-02
7		1	OIL CUP		W-1000
8	5541-3291-100	1	ONE TOUCH		PD8-02
9		1	PU PIPE		Ø8xØ5x450L
10		1	PU PIPE		Ø8xØ5x145L
11		1	90°CONNECTOR		1/8PTx1/4H
12	5541-3262-100	1	ONE TOUCH		1/4°PT
13	5541-3320-200	1	SINGLE SOLENOID		MVSC-300-4E1
14	5541-3323-100	1	ONE TOUCH		PL10-03
15	5541-3320-200	2	SINGLE SOLENOID		MVSC-300-4E1
16	5541-3283-100	5	ONE TOUCH		CTL8-03
17		6	SCREW		M4x40
18		1	PU PIPE		Ø10xØ6.5x8800L
19	5541-3311-100	1	ONE TOUCH		10 ʘL-3/8°

2.1 Air and Lubricant Cabinet					Note
Parts No.	☆	Pc	Description		SUPPLIER Item No
20	5541-3208-100		2	AIR NOISE ELIMINATOR	AN300-03
21	1500-2541-100		1	AUR DISTRIBUTOR	8VM2F
22			3	STOPPER	3/8"PT
23	1200-1162-100		1	VALVE	LS02A
24	5541-3262-100		1	ONE TOUCH	CTL8-02
25			1	PU PIPE	Ø8xØ5x9500L
26	F109-76-3		1	90°CONNECTOR	1/4PTx1/4H
27	1500-2206-100		1	AIR PIPE	1/4PT
28			2	SCREW	M5x55
29			1	AIR PIPE	3/8"x1400L
30	F109-29		1	90°CONNECTOR	3/8"PT*1/4"H
31	1500-1087-100		1	CONNECTOR	BG-02T01T
32	1500-1080-100		2	ANTI-BACK VALVE	PC-02
33	1500-1081-100		1	ONE TOUCH	PL08-01
34			1	PU PIPE	Ø8xØ5x650L
35			2	PU PIPE	Ø8xØ5x65L
36	1500-1082-100		2	PIPE	PE8
37			1	PU PIPE	Ø8xØ5x650L
38	1500-1085-100		2	SPEED-ADJUST CONNECTOR	JSC8-01AT
39			2	PU PIPE	Ø8xØ5x75L
40			1	PU PIPE	Ø8xØ5x800L

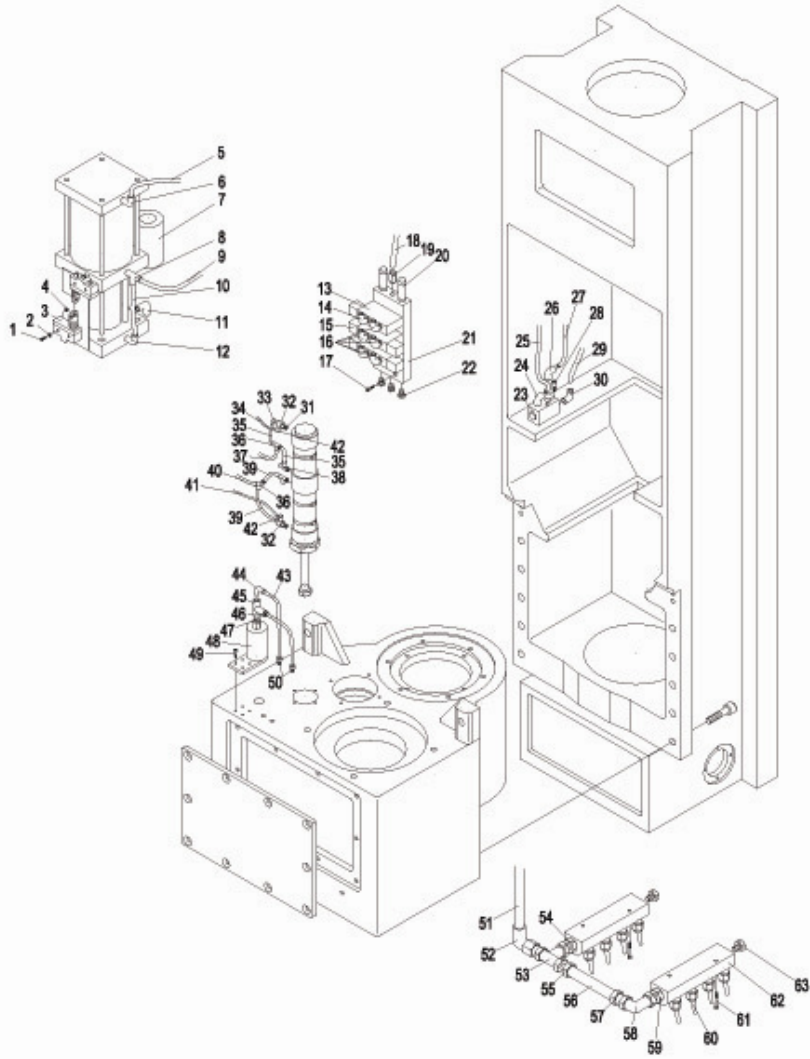
2.1 Air and Lubricant Cabinet					Note
Parts No.	☆	Pc	Description	SUPPLINER Item No	
41		1	PU PIPE	Ø8xØ5x850L	
42	1500-1086-100	2	SPEED-ADJUST CONNECTOR	JSC8-02	
43		2	OIL PIPE	Ø4x360L	
44	F108-PH4-1	1	CONNECTOR	PH4-1	
45	F108-PKD6	1	3 WAY CONNECTOR	PKD-6	
46	F108-PD401	2	CONNECTOR	PD401	
47	F108-PQ10	1	CONNECTOR	PQ10	
48	4850-2206-100	1	TIMER LUBRICATOR	YEM-25L	
49		4	SCREW	M5x16	
50	F108-PD401	2	CONNECTOR	PD401	
51		1	AIR PIPE	1/2"x2000L	
52	F109-43	1	90°CONNECTOR	1/2PTx1/2H	
53	F109-33	1	3 WAY CONNECTOR	1/2PT	
54	F109-54	1	CONNECTOR	1/2"PT*1/2"H	
55	F109-63	1	STEEL PIPE CONNECTOR	1/2PT*15	
56	F109-63	1	STEEL PIPE CONNECTOR	1/2PT*15	
57	F109-63	1	STEEL PIPE CONNECTOR	1/2PT*15	
58	F109-79-1	1	90°CONNECTOR	1/2PT*1/2PT	
59	F109-54	1	CONNECTOR	1/2PTx1/2PT	
60	1000-1004-100	8	SPRINKLE-NOZZLE	1/4"	



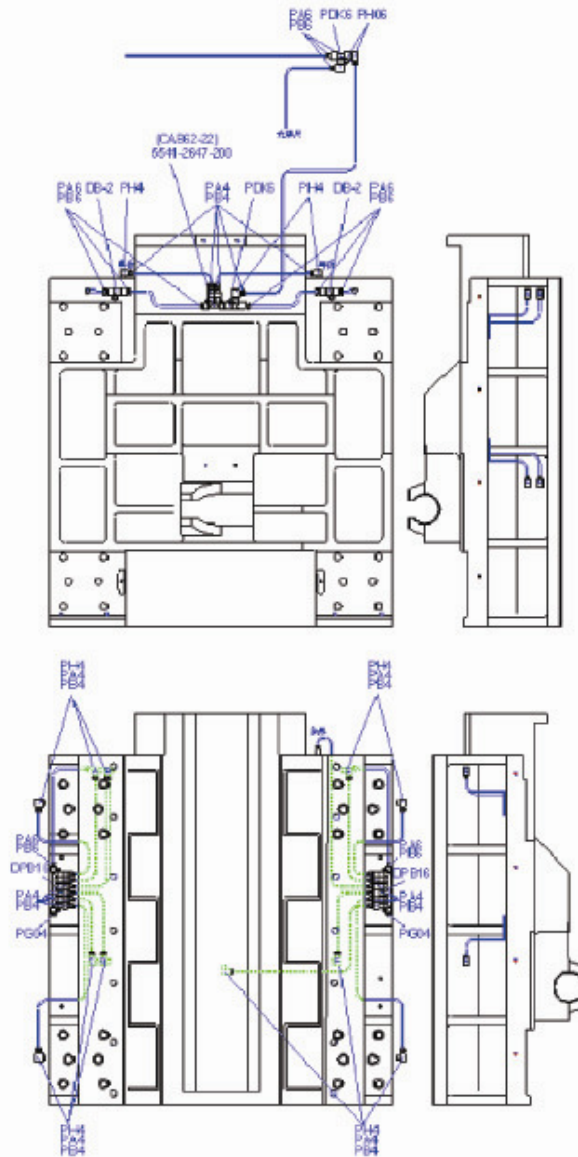
2.1 Air and Lubricant Cabinet					Note
Parts No.	☆	Pc	Description	SUPPLINER Item No	
61		4	SCREW	M5x45	
62	1000-2364-100	2	DISTRIBUTOR	1000-C364	
63		2	STOPPER	1/2PT	

☆ : Suggested Spare Part

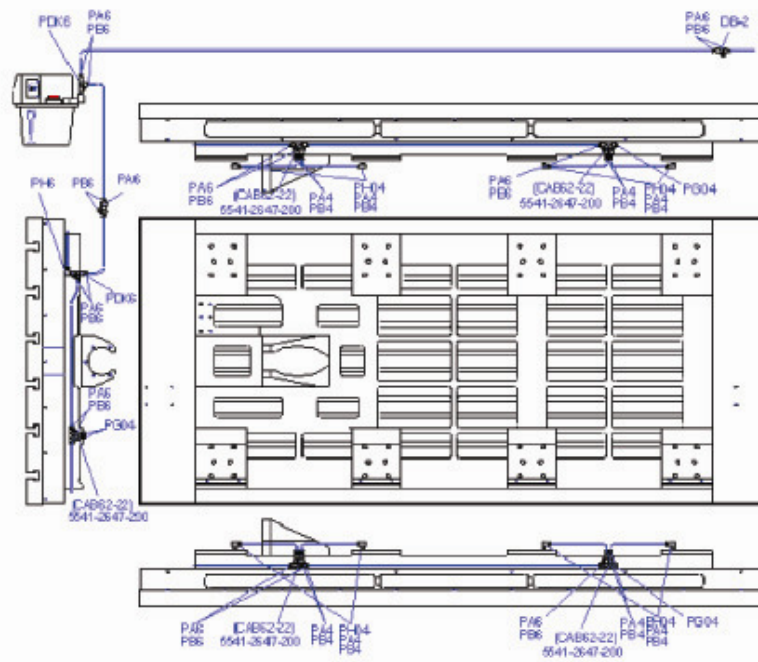
2.1 Air and Lubricant Cabinet



2.2 Table Lubrication Schedule



2.3 Saddle And Spindle Head Lubrication Schedule





3. Suggested Spare Parts List For After Service

3.1 Suggested Spare Part				Note
Parts No.	PC	Description	SUPPLIER Item No	
1	2000-1029-100	1	6 STAGE PROTECTOR (X-LEFT)	1029-100
2	2000-1030-100	1	7 STAGE PROTECTOR (X-RIGHT)	2000-1030
3	2000-1009-100	1	X AXIS COUPLING	Ø 35X Ø40
4	2000-2108-100	1	Y AXIS COUPLING	Ø 35X Ø25
5	B-45TAC75BSUC10PN7B	1	BEARING	45TAC75BSUC10PN7B
6	B-30TAC62BSUC10PN7B	1	BEARING	30TAC62BSUC10PN7B
7	TB-840-8M-40	1	TIMING BELT	840-8M-40
8	2000-2181-100	1	Z AXIS GIB	2000-2181
9	F116-01	1	WIPER BLUE RUBBER	1M
10	EA12-0602-010	1	LIMITED SWITCH	SN02D12-502
11	1500-1121-200	2	TOOL POT	BT50 32ATC
12	850-C086-100	1	DESTER PLUNGERS (5 MOLES)	DPB-1516
13	850-C087-100	1	DESTER PLUNGERS (6 MOLES)	DPB-1616
14	5541-2647-100	1	DESTER PLUNGERS (2 MOLES)	DPB-1216
15	1060-1008-100	1	C.T.S. CONNECTOR	ESX20-8509
16	V43-1048-100	1	C.T.S. CONNECTOR	RIX LX86-244
17	2000-2454-100	1	Y LEFT COVER	2000-2454
18	2000-2453-100	1	Y RIGHT COVER	2000-2453