

**SHARP**

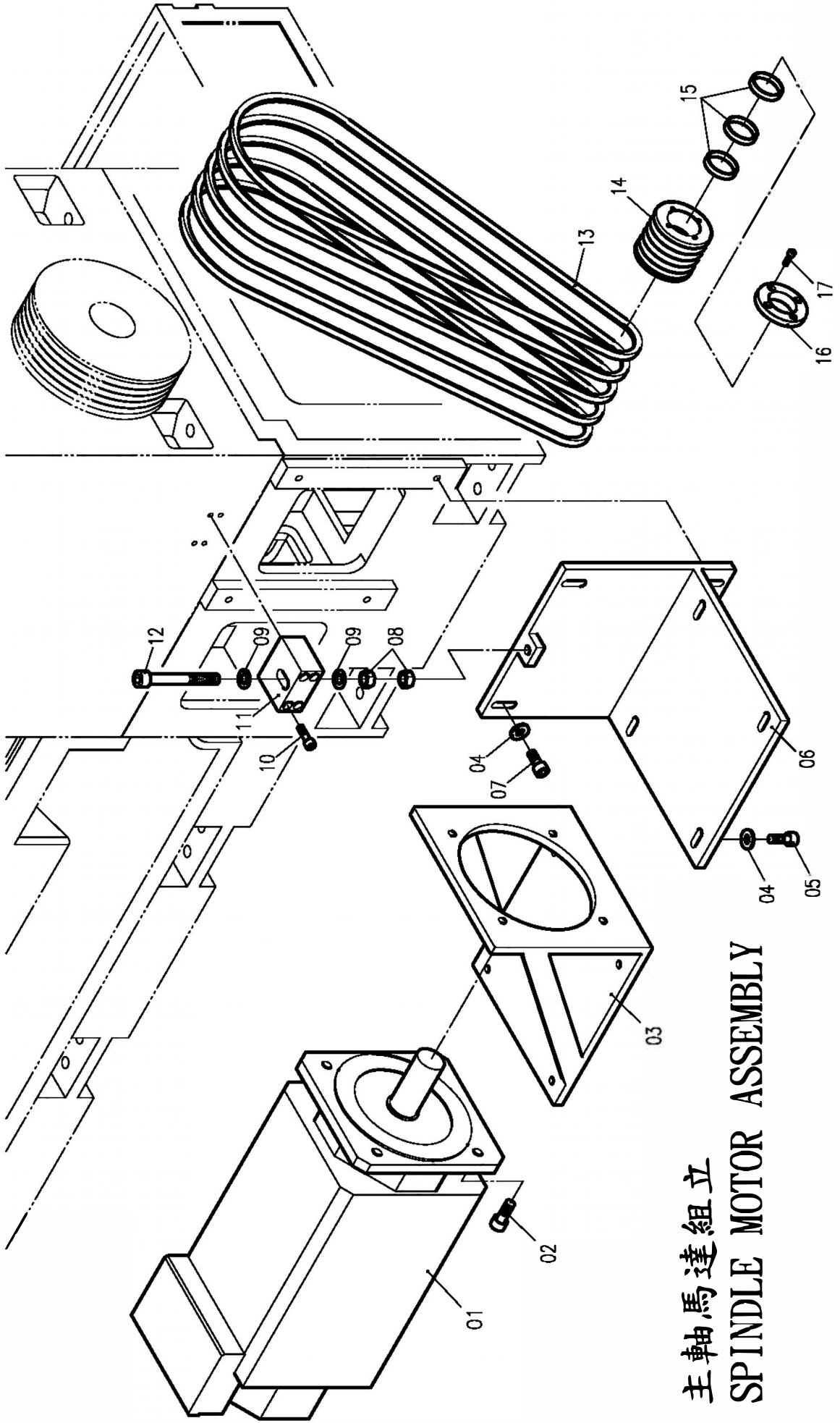
**HEAVY DUTY CNC LATHE**

**MODEL: STB series**

**PARTS LIST**

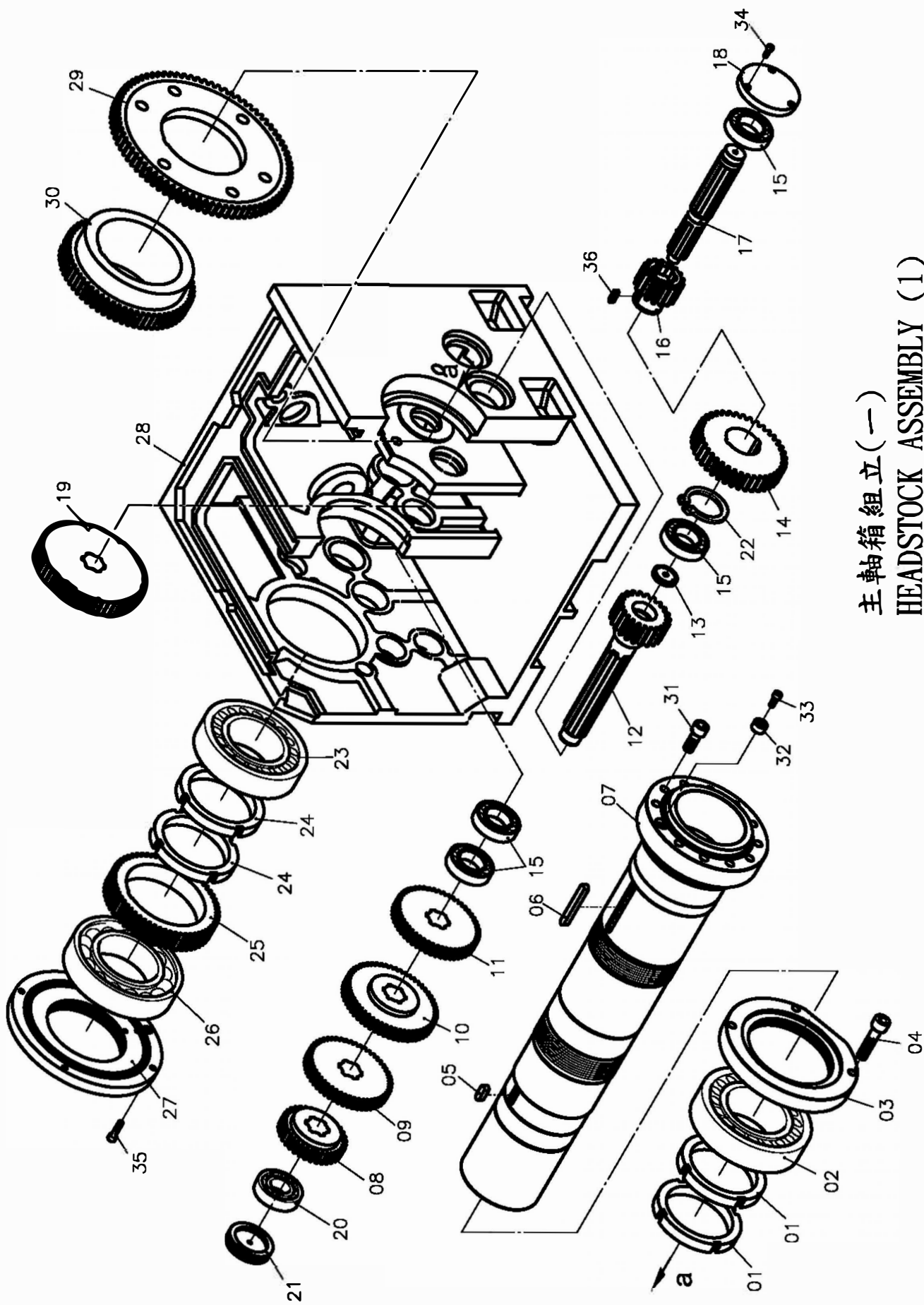
# INDEX

1. SPINDLE MOTOR ASSEMBLY .....	1~2
2. HEADSTOCK ASSEMBLY (1).....	3~5
3. HEADSTOCK ASSEMBLY (2).....	6~7
4. HEADSTOCK ASSEMBLY (3).....	8~9
5. STB X-AXIS ASSEMBLY... ..	10~13
6. STB Z-AXIS ASSEMBLY.....	14~16
7. TAILSTOCK ASSY FOR MOTOR FEEDING.....	17 ~20
8. TAILSTOCK BASE ASSY FOR MOTOR FEEDING.....	21~23
9. STEADY REST ASSY.....	24~25



主軸馬達組立  
SPINDLE MOTOR ASSEMBLY



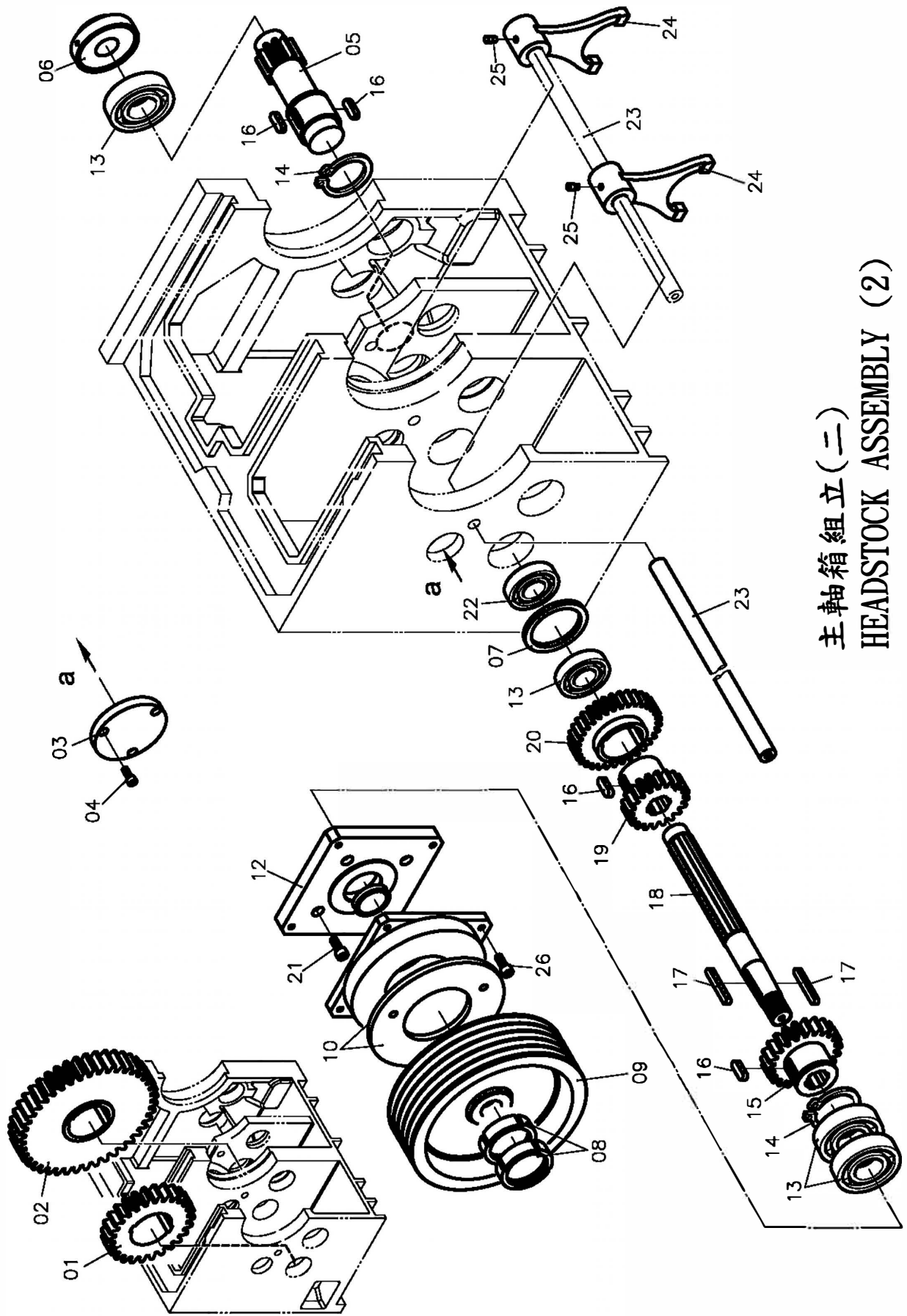


主軸箱組立(一)  
HEADSTOCK ASSEMBLY (1)

# HEADSTOCK ASSEMBLY (1)

NO.	PART NO.	DESCRIPTION	SPECIFICATION	Q' TY
01	HL-2031	NUT(FRONT)		2
02		TAPERED ROLLER BEARING	32040X	1
03	HL-2034	COVER C1(FRONT)		1
04		CAP SCREW	M20*80	4
05		KEY	18*12*45	1
06		KEY	18*12*140	1
07	HL-2002	HEADSTOCK		1
08	HL-2018	SPACE RING		1
09	HL-2090	BUSHING		1
10		SET SCREW	M6*12	8
11		KEY	12*8*30	1
12	HL-2017	GEAR B1		1
13	HL-2022	PAD		1
14	HL-2026	GEAR B7		1
15		DEEP GROOVE BALL BEARING	6211	4
16	HL-2025	GEAR B6		1
17	HL-2023	SHAFT B2		1
18	HL-2014	COVER A2, B2		1
19	HL-2024	GEAR B5		1
20		DEEP GROOVE BALL BEARING	6309	1
21	HL-2027	COVER B1		1
22		C TYPE CIRCLIP	S78	1
23		TAPERED ROLLER BEARING	32038X	1
24	HL-2032	NUT(BACK)		2
25	HL-2033	GEAR C3		1
26		DEEP GROOVE BEARING	6036	1
27	HL-2035	COVER C2 (BACK)		1



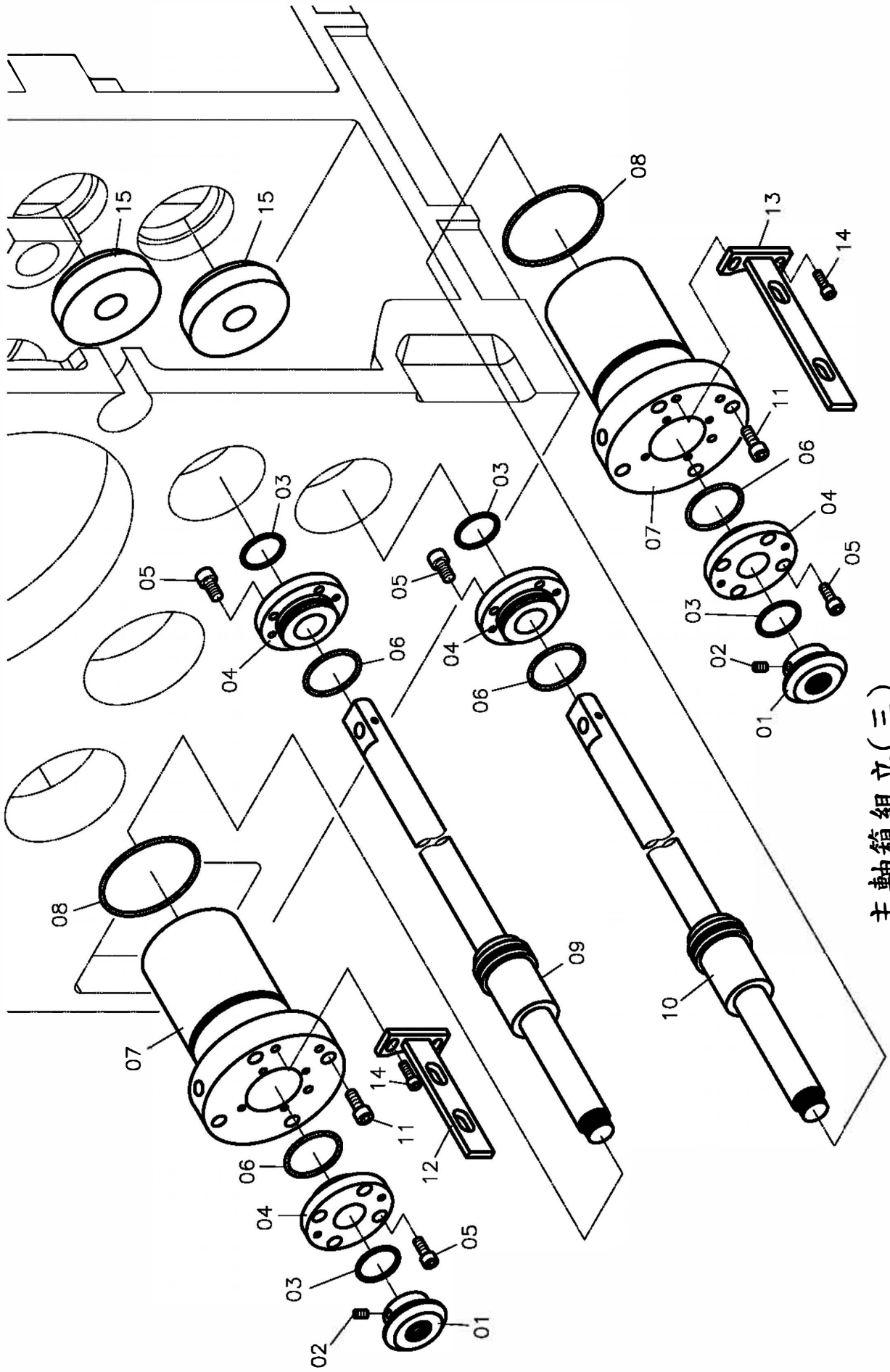


主軸箱組立(二)  
HEADSTOCK ASSEMBLY (2)



## HEADSTOCK ASSEMBLY (2)

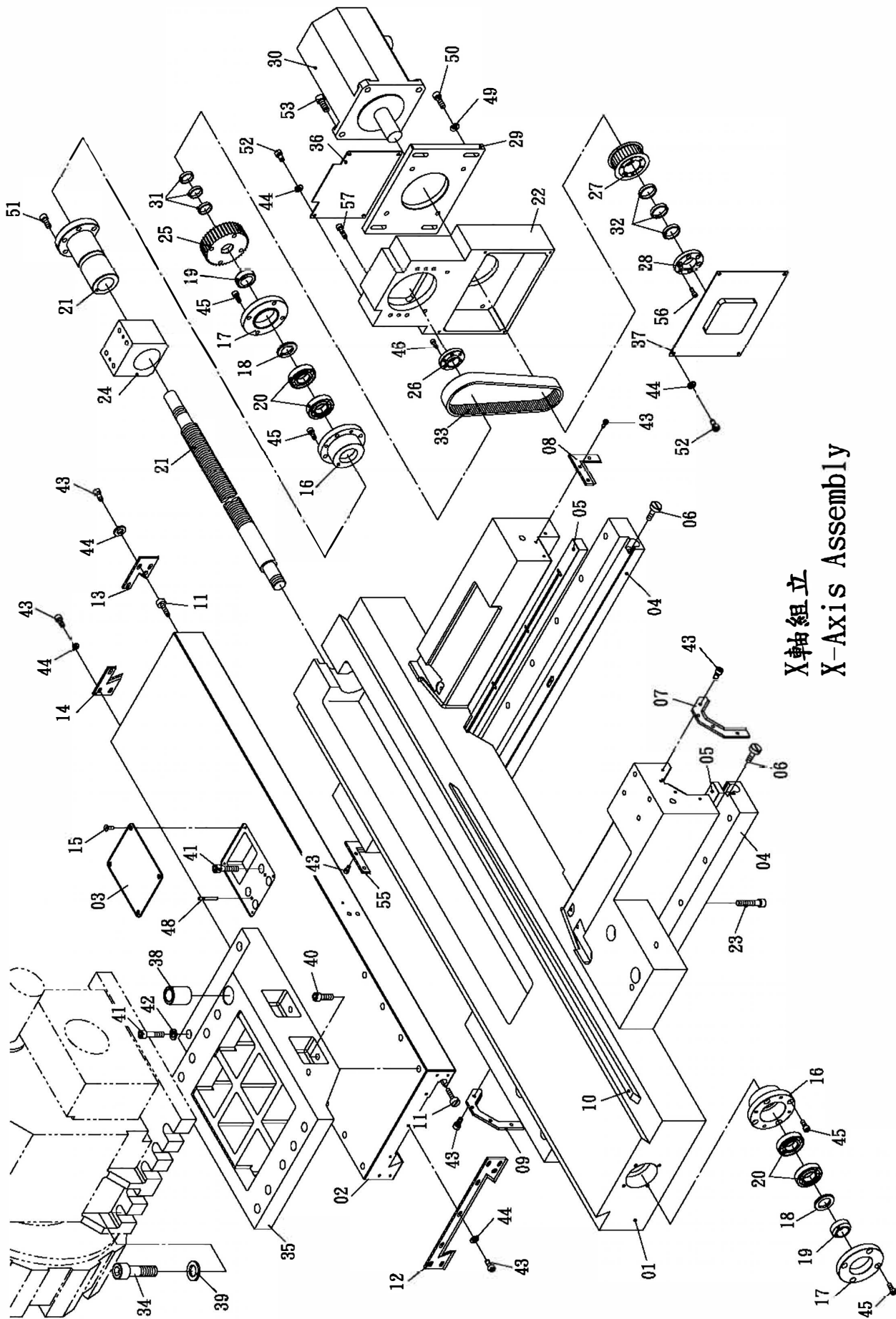
NO.	PART NO.	DESCRIPTION	SPECIFICATION	Q' TY
01	HL-2006	GEAR		1
02	HL-2011	GEAR		1
03	HL-2052	COVER		1
04		CAP SCREW	M10*45	8
05		BALL BEARING	6211	1
06		CAP SCREW	M8*20	3
07	HL-2010	GEAR		1
08	HL-2016	NUT		2
09	HL-2015	BELT PULLEY		1
10		CLUTCH	TMB20	1
11		OIL SEAL	TC45608	1
12	HL-2013	COVER		1
13		BALL BEARING	6309	4
14		SNAP RING	S65	2
15	HL-2005	GEAR		1
16		KEY	12*8*35	3
17		KEY	10*8*70	2
18	HL-2004	SHAFT		1
19	HL-2091	BUSHING		1
20		CAP SCREW	M6*12	8
21	HL-2012	PUMP BASE		1
22	HL-2009	COLLAR		1
23	HL-NC-H15	STUFF		1
24	HL-NC-H01	FORK		1
25	HL-2055	PIN		1
26	HL-2054	FORK		1
27	HL-2053	SHAFT		1



主軸箱組立(三)  
HEADSTOCK ASSEMBLY (3)

## HEADSTOCK ASSEMBLY (3)

NO.	PART NO.	DESCRIPTION	SPECIFICATION E	Q' TY
01	HL-NC-H13	LIMIT SWITCH TOUCH BUTTON		2
02		SET SCREW	M6*6	2
03		O-RING	G25	4
04	HL-NC-H07	COVER OF HYDRAULIC CYLINDER		4
05		CAP SCREW	M6*12	16
06		O-RING	G40	5
07	HL-NC-H02	HYDRAULIC CYLINDER		2
08		O-RING	G75	2
09	HL-NC-H05	SHAFT OF HYDRAULIC CYLINDER-SHORT		1
10	HL-NC-H04	SHAFT OF HYDRAULIC CYLINDER-LONG		1
11		CAP SCREW	M8*28	16
12	HL-NC-H10	FIXED HOLDER		1
13	HL-NC-H11	FIXED HOLDER		1
14		CAP SCREW	M6*16	1
15	HL-NC-H14	STUFF		2



X軸組立  
X-Axis Assembly

# STB X AXIS ASSEMBLY

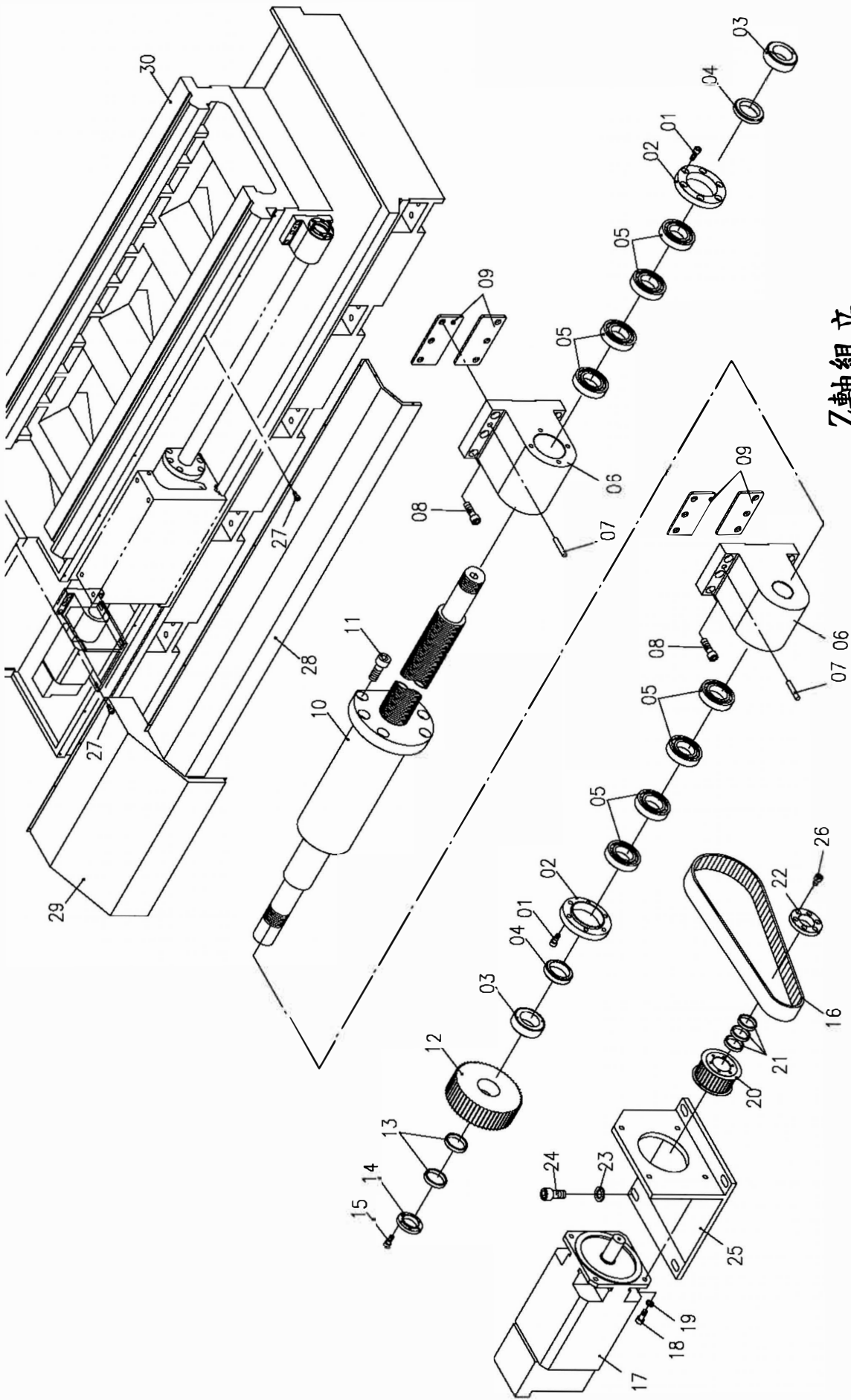
NO.	PART NO.	DESCRIPTION	SPECIFICATION	Q' TY
01	CC0030	CARRIAGE		1
02	CC0031	CROSS SLIDE		1
03	BC0252	COVER		1
04	RHL1-3021	LINING PLATE		2
05	RHL1-3024	STRIP OF LINING PLATE		2
06		WASHER	M10	4
07	BC0249	WIPER FOR SADDLE 1		1
08	CC0087	WIPER FOR SADDLE 3		1
09	BC0250	WIPER FOR SADDLE 2		1
10	BC0248	SADDLE GIB		1
11		WASHER	M8	2
12	BC0255	WIPER 1		1
13	CC0088	WIPER 2		1
14	BC0257	WIPER 3		1
15		SCREW	M5*10	4
16	RHL1-3005	BEARING HOUSING (X-AXIS)		2
17	RHL1-3006	COVER OF X-AXIS BEARING		2
18	RHL1-3007	WASHER		2
19		NUT	YSF-M30	2
20		BEARING	SKF-7206	4
21	CC0081	X-AXIS BALLS SCREW		1
22	CC0082	X-AXIS MOTOR PLATE		1
23		CAP SCREW	M12*55	14
24	CC0083	NUT HOUSING		1
25	RHL1-3008	GEAR	2.5M 40T	1
26	RHL1-3009	COVER FOR X-AXIS PULLEY		1
27	HL1-3004	X-AXIS MOTOR PULLEY		1

# STB X AXIS ASSEMBLY

NO.	PART NO.	DESCRIPTION	SPECIFICATION	Q' TY
28	HL1-1010	COVER FOR PULLEY		1
29	HL1-3005	X-AXIS MOTOR PLATE		1
30		X-AXIS MOTOR	FANUC $\alpha$ 22i	1
31		PACKING RIGN	28*32*6.3	3
32		PACKING RING	35*40*7	3
33		X-AXIS BELT	720-8M	1
34		CAP SCREW		10
35	CC0084	TURRET PAD		1
36	CC0085	X-AXIS MOTOR PLATE		1
37	RHL1-3040	X-AXIS PULLEY PLATE		1
38	RHL1-3041	FIXED PIN		1
39		FLAT WASHER	M24	10
40		CAP SCREW	M12*38	4
41		CAP SCREW	M12*50	6
42		FLAT WASHER	M12	2
43		CAP SCREW	M6*14	28
44		FLAT WASHER	M6	22
45		CAP SCREW	M8*20	16
46		CAP SCREW	M6*18	6
47		CAP SCREW	M8*30	8
48		PIN	Ø6	2
49		FLAT WASHER	M10	4
50		CAP SCREW	M10*30	4
51		CAP SCREW	M10*25	5
52		CAP SCREW	M6*12	8
53		CAP SCREW	M12*30	4
54		CAP SCREW	M12*60	14

# STB X AXIS ASSEMBLY

NO.	PART NO.	DESCRIPTION	SPECIFICATION	Q' TY
55	CC0089	WIPER FOR SADDLE 1		1
56		CAP SCREW	M6*16	6
57		CAP SCREW	M8*30	4



Z軸組立  
Z-Axis Assembly

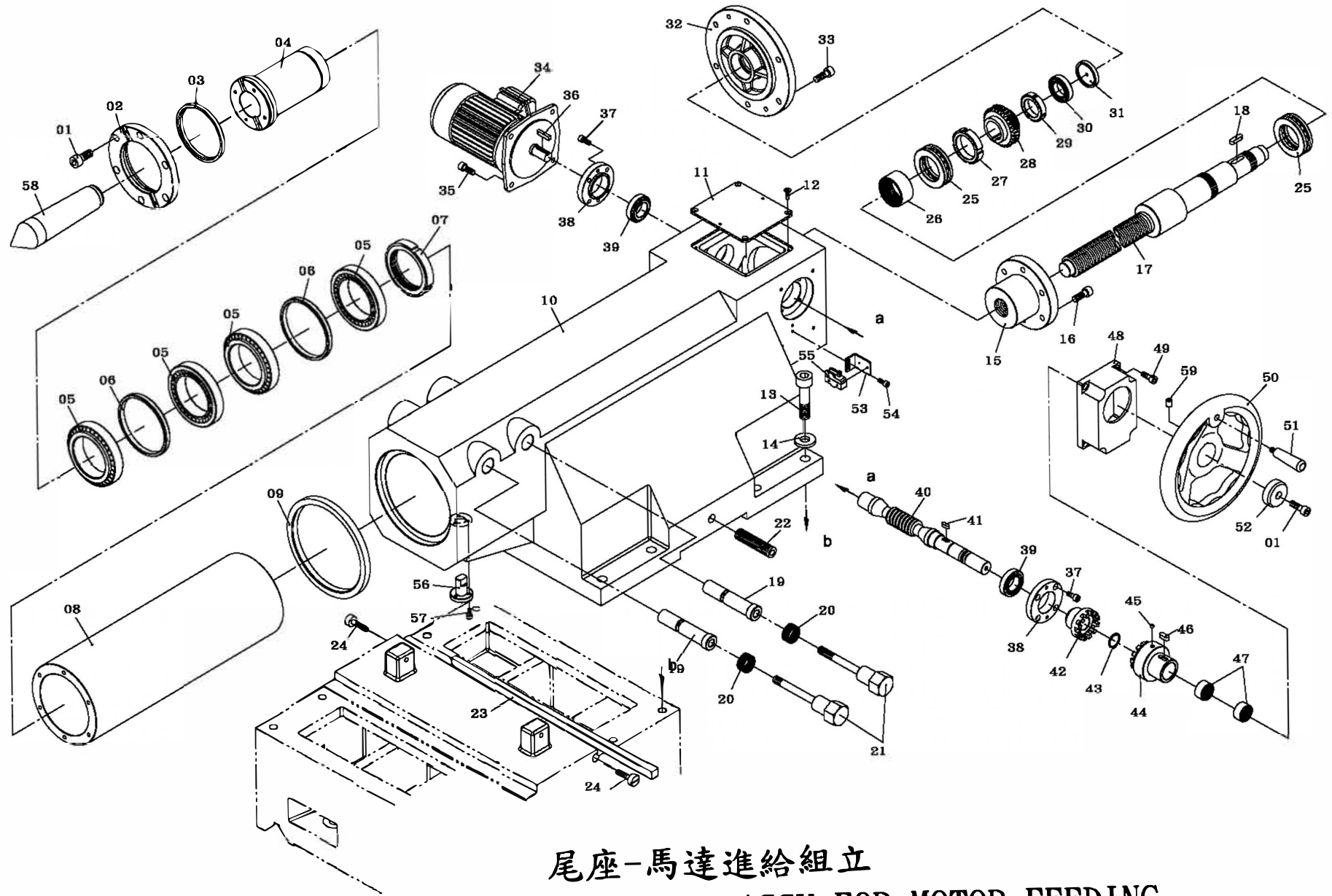


# STB Z AXIS ASSEMBLY

NO.	PART NO.	DESCRIPTION	SPECIFICATION	Q' TY
01		CAP SCREW	M8*20	12
02	9C0031	Z-AXIS BEARING COVER		2
03	M150401	NUT		2
04	9C0027	WASHER		2
05	M090305	BALL BEARING		8
06	9C0023	Z-AXIS NUT HOUSING		2
07		TAPER PIN	$\phi$ 8*50	4
08		CAP SCREW	M12*40	12
09	HL-NC-294	GASKET		4
10	M110220	Z-AXIS BALL SCREW	2M	1
	M110221		3M	
	M110129		4M	
	M110222		5M	
	M110223		6M	
11		CAP SCREW	M16*40	6
12	9C0026	PULLEY OF Z-AXIS SCREW		1
13	M080304	PACKING RING		3
14	9C0016	COVER		1
15		CAP SCREW	M6*16	4
16		Z-AXIS BELT	600-8M	1
17		Z-AXIS MOTOR	FANUC $\alpha$ 30 i	1
18		CAP SCREW	M12*30	4
19		SPRING WASHER	M12	4
20	9C0020	Z-AXIS MOTRO PULLEY		1
21	M080311	PACKING RING		2
22	3C0026	COVER FOR PULLEY		1
23		FLAT WASHER	M12	4

# STB Z AXIS ASSEMBLY

NO.	PART NO.	DESCRIPTION	SPECIFICATION E	Q' TY
24		CAP SCREW	M12*35	4
25	9C0042	Z-AXIS MOTOR HOUSING		1
26		CAP SCREW	M6*12	2
27		CAP SCREW	M6*12	24
28	HL-NC-285	COVER FOR Z-AXIS SCREW	2M	1
	HL-NC-285-3		3M	
	HL-NC-285-4		4M	
	HL-NC-285-5		5M	
	HL-NC-285-6		6M	
29	HL-1008	COVER		1
30	BC0001	BED	2M	1
	BC0002		3M	
	BC0003		4M	
	BC0004		5M	
	BC0005		6M	



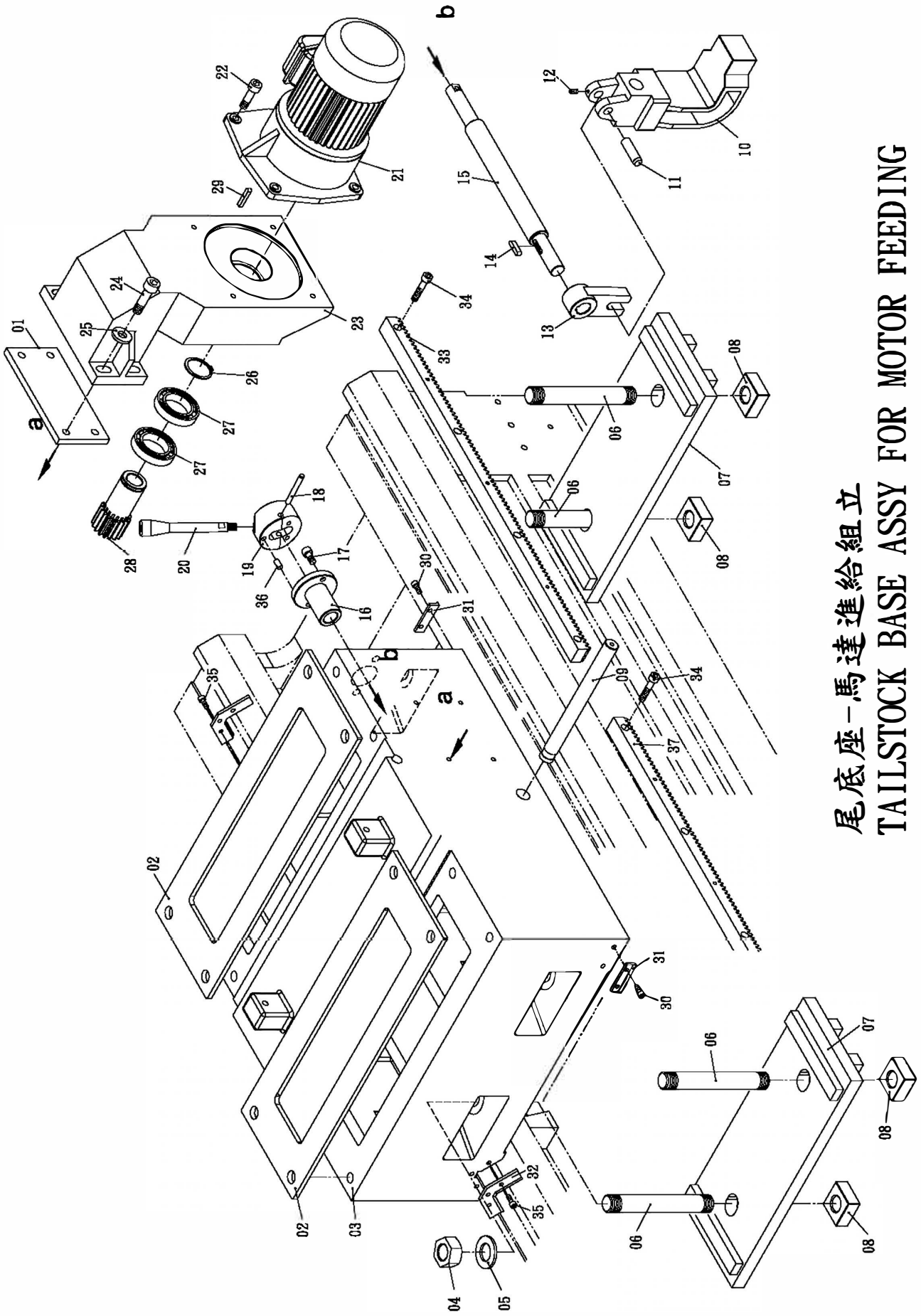
尾座-馬達進給組立  
TAILSTOCK ASSY FOR MOTOR FEEDING

STB TAILSTOCK ASSY FOR MOTOR FEEDING				
NO.	PART NO.	DESCRIPTION	SPECIFICATION	Q' TY
01		CAP SCREW	M10*25	7
02	RHL1-7004	FRONT COVER		1
03		OIL SEAL	120*140*13	1
04	RHL1-7005	ROTATING MANDREL		1
05		BEARING	32020X	4
06	RHL1-7006	SPACER RING		2
07		LOCKING NUT	YSR M100*2	1
08	BC0227	BARREL		1
09		OIL SEAL	200*230*15	1
10	BC0223	TAILSTOCK CASTING (MOTORIZED)		1
11	RHL1-7008	UPPER COVER		1
12		FLAT HEAD SCREW	M6*16	4
13		CAP SCREW	M20*85	8
14		WASHER	M20	8
15	RHL1-7004	SCREW NUT		1
16		CAP SCREW	M12*30	6
17	BC0228	TAILSTOCK SCREW		1
18		KEY	10*8*35	1
19	RHL1-7011	LOCKING LEVER		2
20	RHL1-7010	SPRING		2
21	RHL1-7009	LOCK SHAFT		2
22		SET SCREW	M12*85	1
23	BC0237	GIB		1
24		GIB SCREW	M8	2
25		THRUST BALL BEAR	51212	2
26		NEEDLE ROLLER BEARING	RNA607235	1
27		LOCKING NUT	M60*2	1

STB TAILSTOCK ASSY FOR MOTOR FEEDING				
NO.	PART NO.	DESCRIPTION	SPECIFICATION	Q' TY
28	RHL1-7045	TAILSTOCK WORM		1
29		LOCKING NUT	M45*1.5	1
30		BEARING	6007	1
31	RHL1-7047	SPACER		1
32	RHL1-7055	REAR COVE OF TAILSTOCK		1
33		CAP SCREW	M12*25	6
34		MOTOR	1/4HP	1
35		CAP SCREW	M10*28	4
36		KEY	7*7*36	1
37		CAP SCREW	M8*18	8
38	RHL1-7048	COVER OF WORM SHAFT		2
39		BEARING	32007	2
40	RHL1-7046	WORM SHAFT		1
41		KEY	7*7*20	1
42	RHL1-7049	CLUTCH 2		1
43		SNAP RING	S30	1
44	RHL1-7050	CLUTCH 1		1
45		STEEL BALL	Ø8	1
46		KEY	10*8*25	1
47		BEARING	RNA304020	2
48	RHL1-7053	WORM BLOCK		1
49		CAP SCREW	M8*20	4
50	RHL1-7052	HANDLEWHEEL		1
51		HANDLE	M12	1
52	RHL1-7051	WORM PAD		1
53	RHL1-7054	BLOCK FOR LIMIT SWITCH		1
54		CAP SCREW	M6*12	2

## STB TAILSTOCK ASSY FOR MOTOR FEEDING

NO.	PART NO.	DESCRIPTION	SPECIFICATION	Q' TY
55		LIMIT SWITCH		1
56	BC0240	KEY		1
57		CAP SCREW	M6*20	3
58		CENTER	MT6	1
59		SCREW	M10*12	1

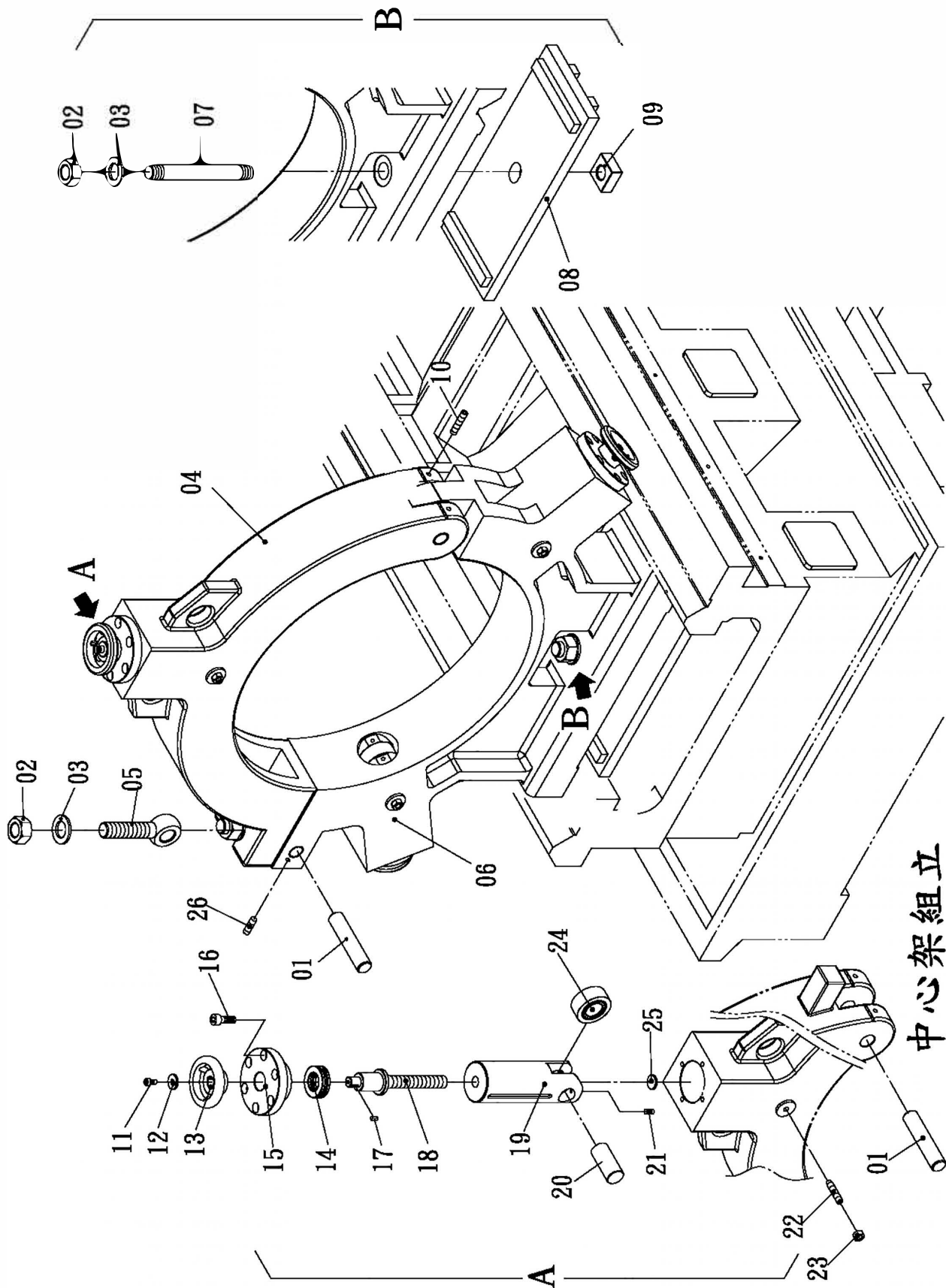


尾底座-馬達進給組立  
TAILSTOCK BASE ASSY FOR MOTOR FEEDING

STB TAILSTOCK BASE ASSY FOR MOTOR FEEDING				
NO.	PART NO.	DESCRIPTION	SPECIFICATION	Q' TY
01	BC0227	PAD		1
02	BC0226	PLATE FOR TAILSTOCK BASE		2
03	BC0224	BASE	1120	1
	BC0225		1320	1
04		NUT	M30	4
05		WASHER	M30	4
06	RHL1-7017	CLAMPING SCREW LEVER		4
07	BC0236	CLAMPING PLATE		2
08	RHL1-7016	CLAMPING NUT		4
09	BC0231	ANT-RETREAT SHAFT		1
10	BC0234	ANT-RETREAT BLOCK		1
11		PIN	Ø16*55	1
12		SET SCREW	M6*10	1
13	BC0233	ANTI-RETREAT SWING PLATE		1
14		KEY	7*7*30	1
15	BC0232	ANTI-RETREAT HANDLE		1
16	BC0235	SPEED POSITIONING BLOCK		1
17		CAP SCREW	M8*16	2
18		PIN	Ø8*80	1
19	RHL1-7029	BASE OF SHIFT LEVER		1
20		SHIFT LEVER	238	1
21		MOTOR	1/2HP	1
22		CAP SCREW	M10*30	4
23	BC0229	MOTOR		1
24		CAP SCREW	M12*50	4
25		WASHER	M12	4
26		SNAP RING	S45	1







中心架組立  
STEADY REST ASSY

# STB STEADY REST ASSY

NO.	PART NO.	DESCRIPTION	SPECIFICATION	Q' TY
01	RHL1-9025	SHAFT		2
02		NUT	M30	5
03		WASHER	M30	5
04	RHL1-9026	BOLT		1
05	BC0263	UPPER OF STEADY REST		1
06	BC0264	BUTTOM OF STEADY REST		1
07	RHL1-9024	CLAMPING SCREW LEVER		4
08	BC0236	CLAMPING PLATE		2
09	RHL1-7016	CLAMPING NUT		4
10		SCREW	M10*45	2
11		CAP SCREW	M8*16	3
12	RHL1-9006	WASHER		3
13	RHL-9013	HANDLEWHEEL		3
14		BEARING	51207	6
15	RHL1-9028	COVER		3
16		CAP SCREW	M10*25	12
17		KEY	5*5*16	3
18	BC0265	LEAD SCREW		3
19	BC0264	SHAFT		3
20	RHL1-9007	PIN		3
21		SCREW	M8*14	6
22	RHL1-9027	SET SCREW		3
23		NUT	M12	3
24		THK BEARING	NART_35R_UU	3
25	RHL1-9021	COVER		3
26		SET SCREW	M10*28	2