



# PARTS LIST

***VH-25 SERIES***

***HEAVY DUTY***

2184-7711-100 A00

Machine Number :

Approve:

Drawn	Approve	Date	Edition	Note
			A 00	VH-25 SERIES HEAVY DUTY Parts List

SHARP INDUSTRIES, INC.

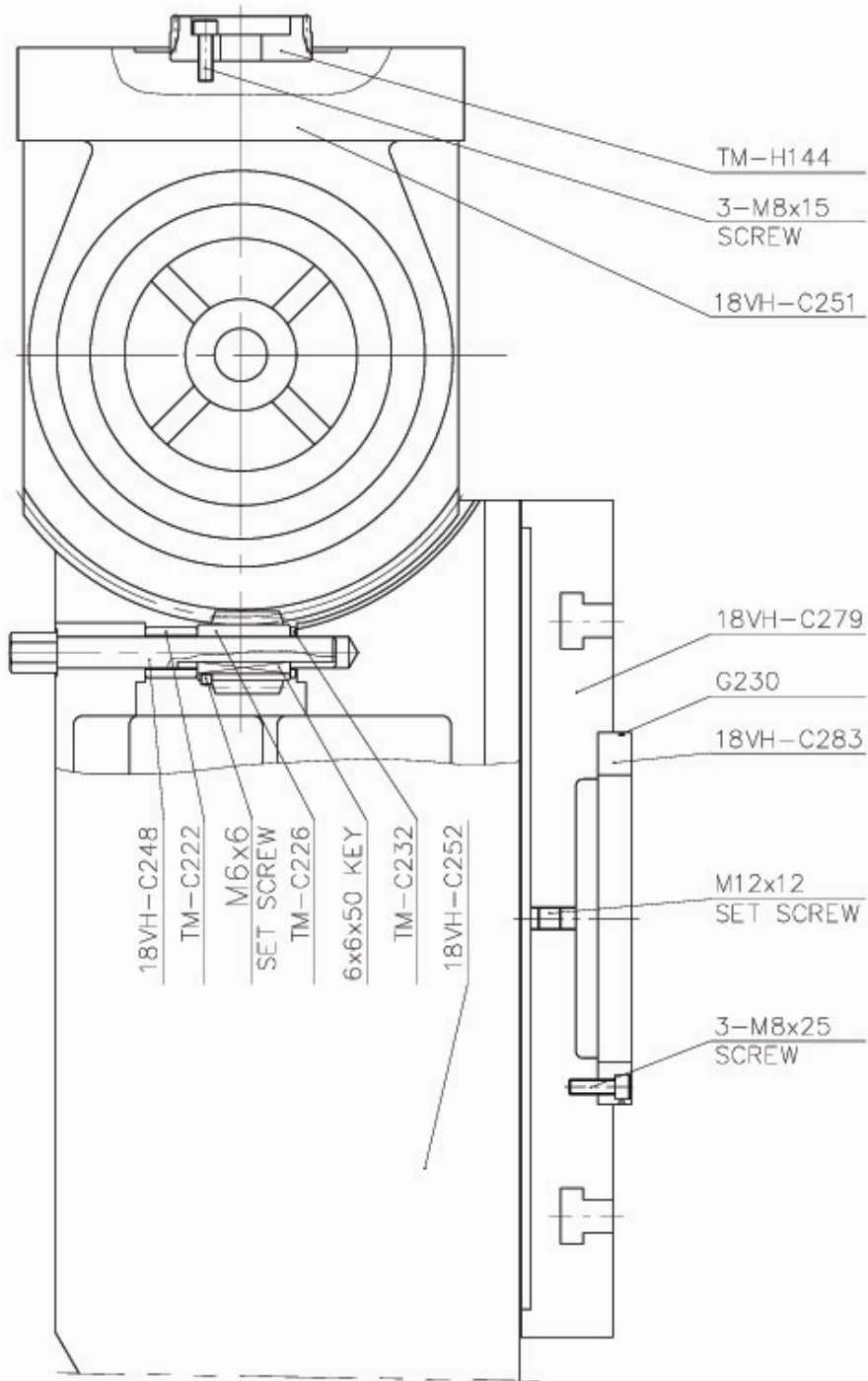
3501 CHALLENGER STREET

TORRANCE, CALIFORNIA 90503

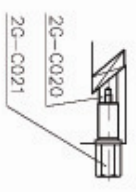
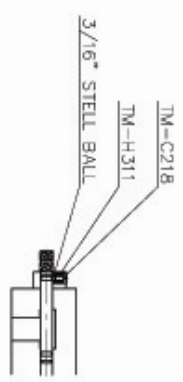
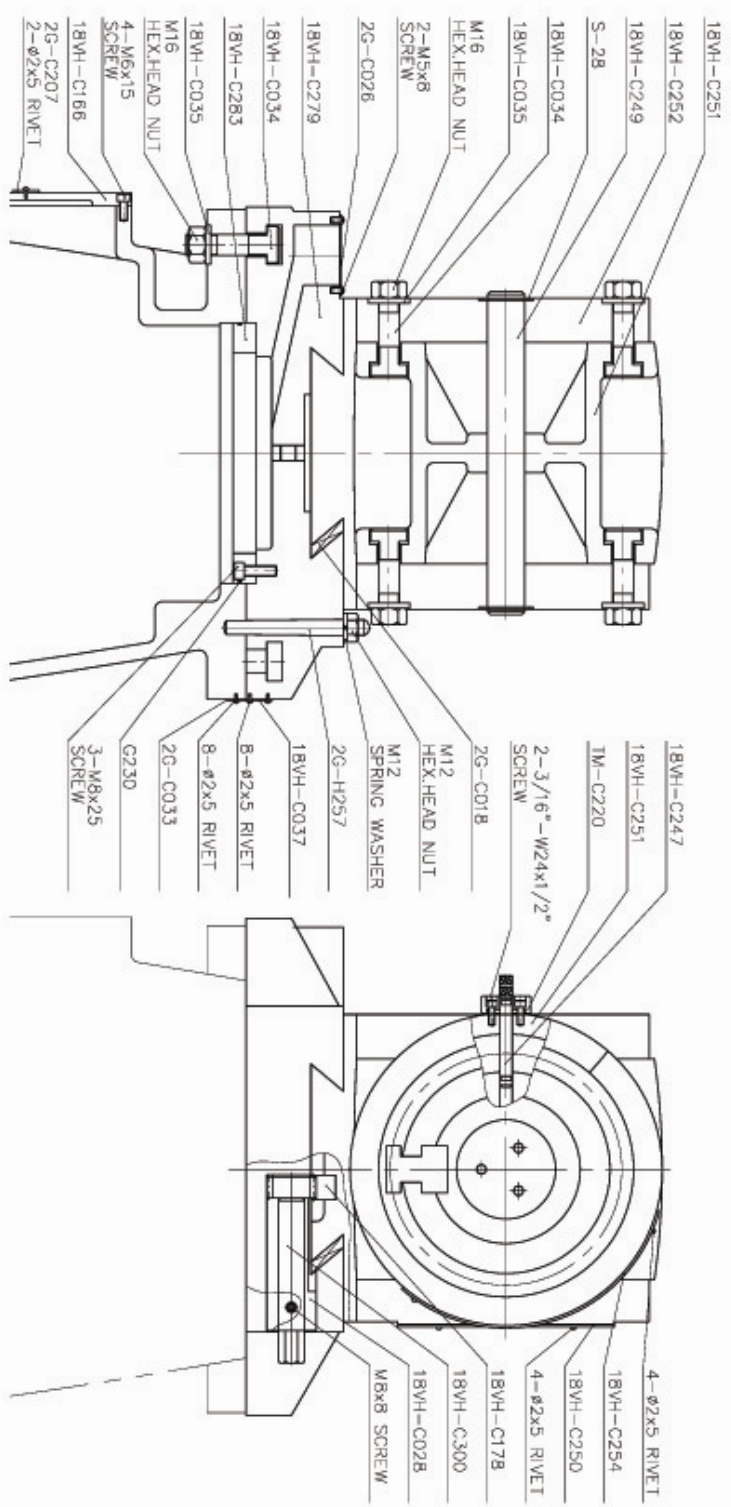
TEL : (310) 370-5990 FAX : (310) 542-6162

<http://www.sharp-industries.com>



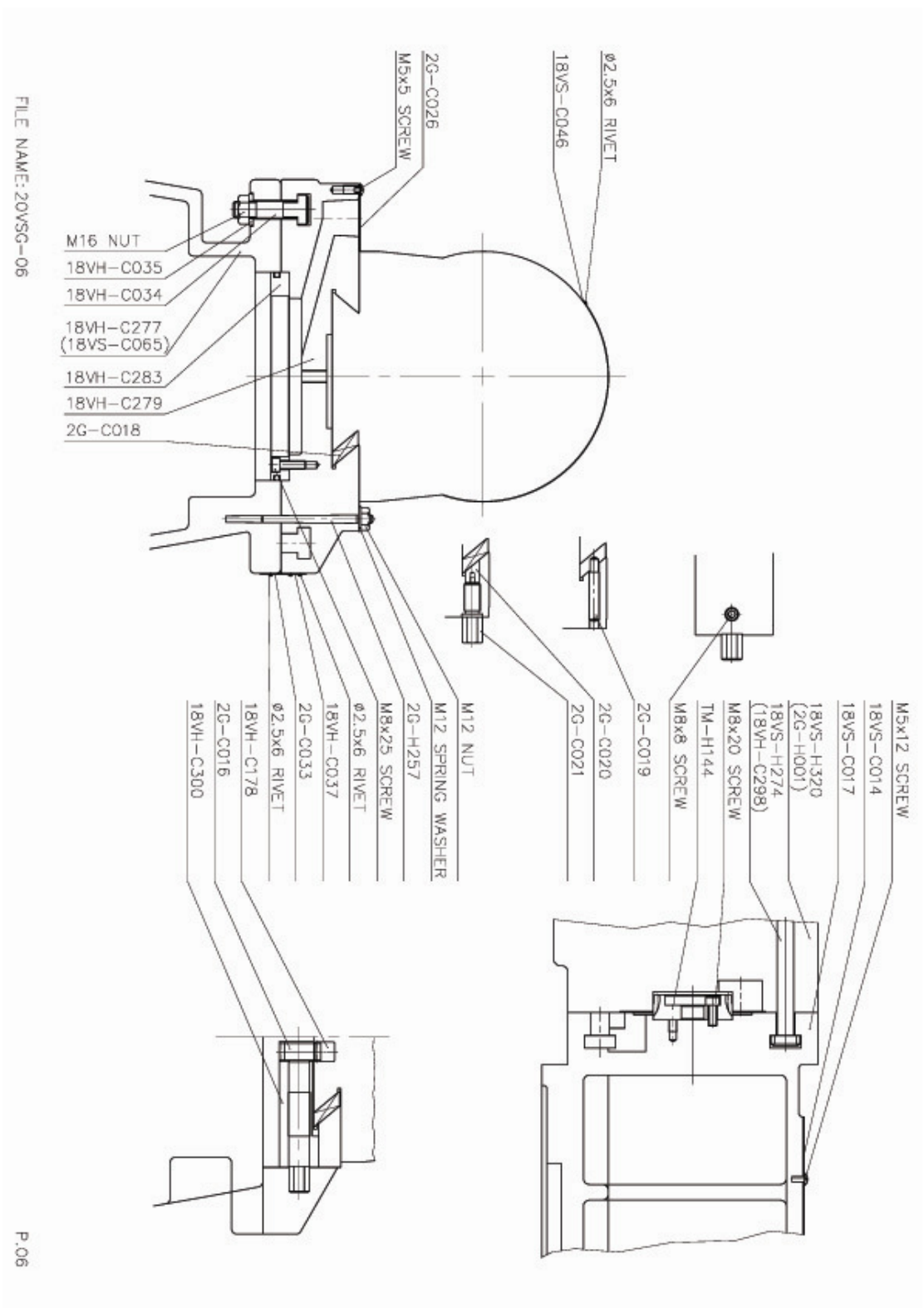


PARTS NO	PC	DESCRIPTION	REMARKS	
1	18VH-C028	1	PINION BUSHING	
2	18VH-C283	1	TURRET ROTARY RING	
3	18VH-C034	12	T-BOLT	
4	18VH-C035	12	FLAT WASHER	
5	18VH-C037	1	SCALE	
6	18VH-C166	1	COLUMN LEFT COVER	
7	18VH-C178	1	OVERARM RACK	
8	18VH-C277	1	COLUMN	
9	18VH-C300	1	OVERARM MOVING PINION	
10	18VH-C279	1	TURRET	
11				
12	TM-H311	1	SPRING	
13	TM-C218	1	SCREW	
14				
15	2G-C001	2	OVERARM ADAPTER	
16	2G-C002	1	OVERARM	
17	2G-C006	1	HORIZONTAL ADJUSTING WORM	
18	2G-C007	2	WORM SLEEVE	
19	2G-C008	1	PLATE	
20	2G-C009	1	OVERARM ADAPTER LOCK RING	
21	2G-C010	2	LOCK BOLT	
22	2G-C018	1	OVERARM-TURRET GIB	
23	2G-C019	1	GIB STATIONARY BOLT	
24	2G-C020	1	OVERARM LOCK PLUNGER	
25	2G-C021	1	OVERARM LOCK BOLT	
26	2G-C026	1	OIL HOLE COVER	
27	2G-C033	1	PLATE	
28	2G-C207	1	OIL QUANTITY INDICATE PLATE	
29	2G-H257	1	TAPER PIN	
30				
31				
32				
33				
34				
35				



FILE NAME: 20VSG-04

PARTS NO		PC	DESCRIPTION	REMARKS
1	18VS-H274	4	T-BOLT	
2	18VS-H320	1	QUILL HOUSING	
3	18VS-C014	2	COVER	
4	18VS-C017	1	OVERARM	
5	18VS-C046	1	SCALE	
6				
7	18VH-C034	4	T-BOLT	
8	18VH-C035	4	FLAT WASHER	
9	18VH-C037	1	SCALE	
10	18VH-C178	1	OVERARM MOVING RACK	
11	18VH-C277	1	COLUMN	
12	18VH-C279	1	TURRET	
13	18VH-C283	1	TURRET ROTARY RING	
14	18VH-C300	1	PINION BUSHING	
15				
16	2G-C016	1	OVERARM MOVING PINION	
17	2G-C018	1	OVERARM-TURRET GIB	
18	2G-C019	2	GIB STATIONARY BOLT	
19	2G-C020	2	OVERARM LOCK PLUNGER	
20	2G-C021	2	OVERARM LOCK BOLT	
21	2G-C026	1	OIL HOLE COVER	
22	2G-C033	2	PLATE	
23				
24	2G-H257	1	TAPER PIN	
25				
26	TM-H144	1	GEAR	

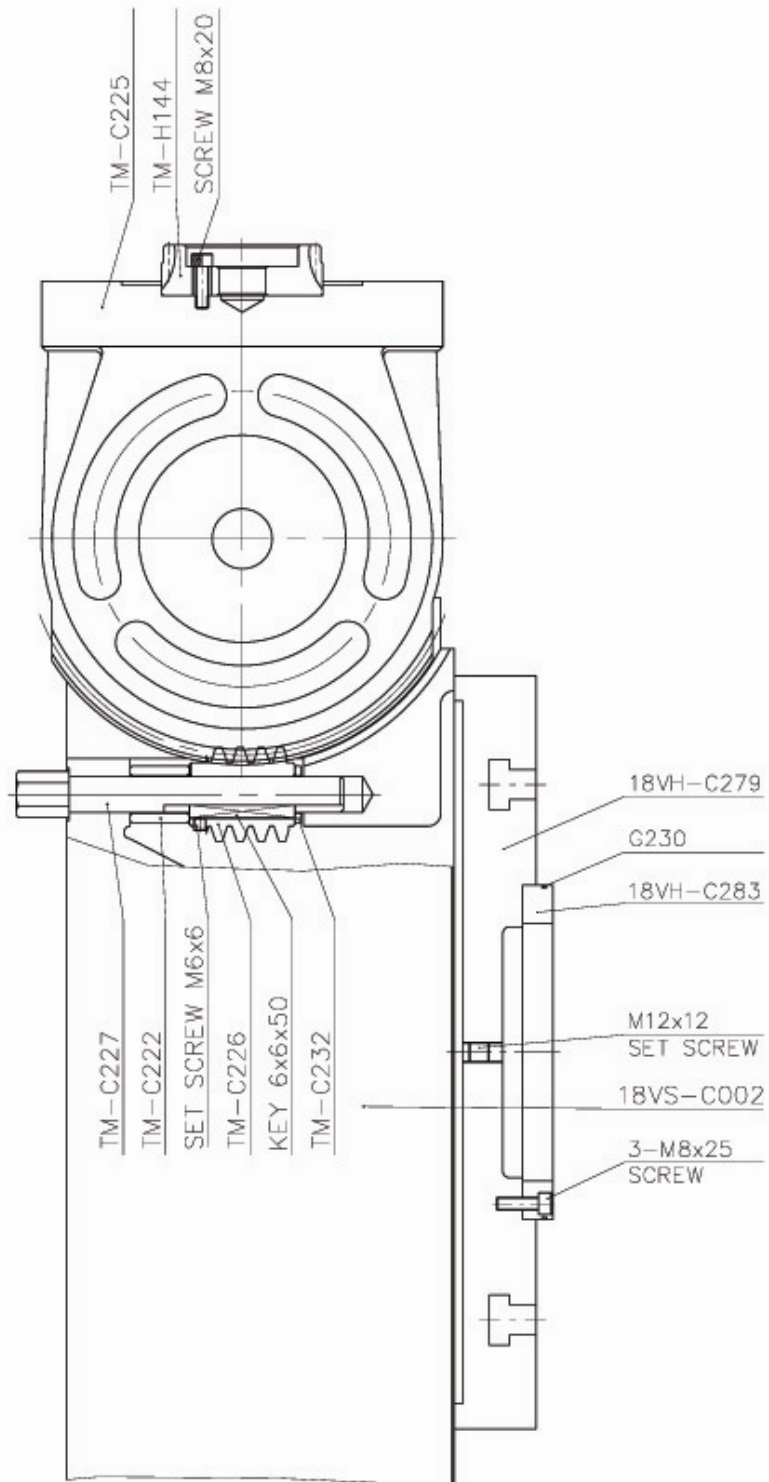


FILE NAME: 20V5G-06

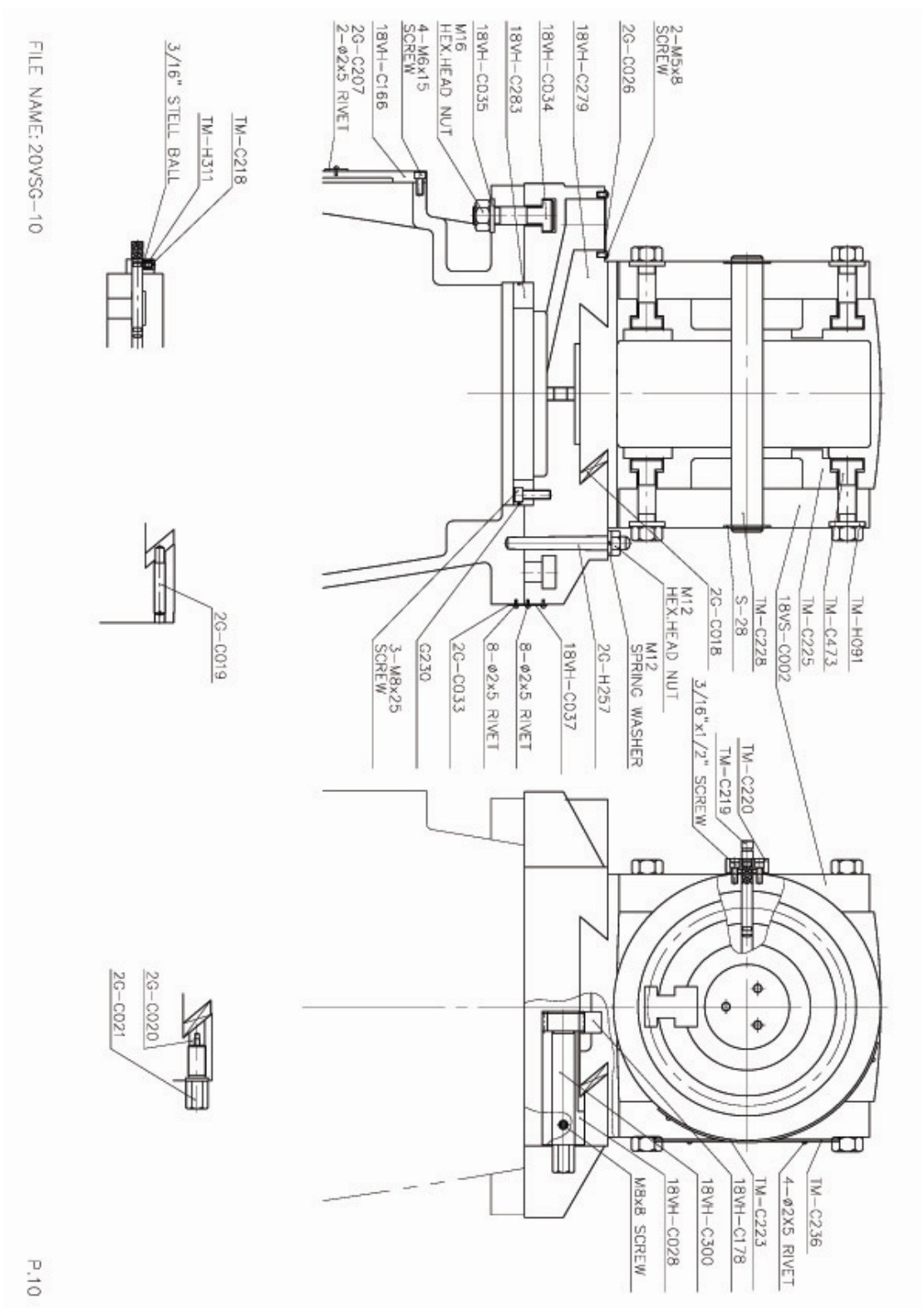


PARTS NO	PC	DESCRIPTION	REMARKS
1	TM-H114	1 GEAR	
2	TM-C222	1 UPPER WORM SPACER	
3	TM-C225	1 RAM ADAPTER	
4	TM-C226	1 VERTICAL ADJUSING WORM	
5	TM-C227	1 VERTICAL ADJUSING WORM SHAFT	
6	TM-C232	1 WORM THRUST WASHER	
7	18VS-C002	1 RAM	
8	18VH-C279	1 TURRET	
9	18VH-C283	1 TURRET ROTARY RING	





PARTS NO	PC	DESCRIPTION	REMARKS	
1	18VS-C002	1	RAM	
2	18VH-C034	1	T-BOLT	
3	18VH-C035	1	FALT WASHER	
4	18VH-C037	1	SCALE	
5	18VH-C166	1	COLUMN LEFT COVER	
6	18VH-C028	1	PINION BUSHING	
7	18VH-C178	1	OVERARM RACK	
8	18VH-C279	1	TURRET	
9	18VH-C283	1	TURRET ROTARY RING	
10	18VH-C300	1	OVERARM MOVING PINION	
11				
12	TM-H091	6	BRAKE LOCK WASHER	
13	TM-H311	1	SPRING	
14	TM-C218	1	SCREW	
15	TM-C219	1	HEAD ROTATION STOP PIN	
16	TM-C220	1	STOP PIN BASE	
17	TM-C223	1	SCALE	
18	TM-C225	1	RAM ADAPTER	
19	TM-C228	1	ADAPTER PIVOT STUD	
20	TM-C236	1	SCALE	
21	TM-C473	6	T-BOLT	
22				
23	2G-C018	1	OVERARM-TURRET GIB	
24	2G-C019	1	GIB STATIONARY BOLT	
25	2G-C020	1	OVERARM LOCK PLUNGER	
26	2G-C021	1	OVERARM LOCK BOLT	
27	2G-C026	1	OIL HOLE COVER	
28	2G-C033	1	PLATE	
29	2G-C207	1	OIL QUANTITY INDICATE PLATE	
30	2G-H257	1	TAPER PIN	

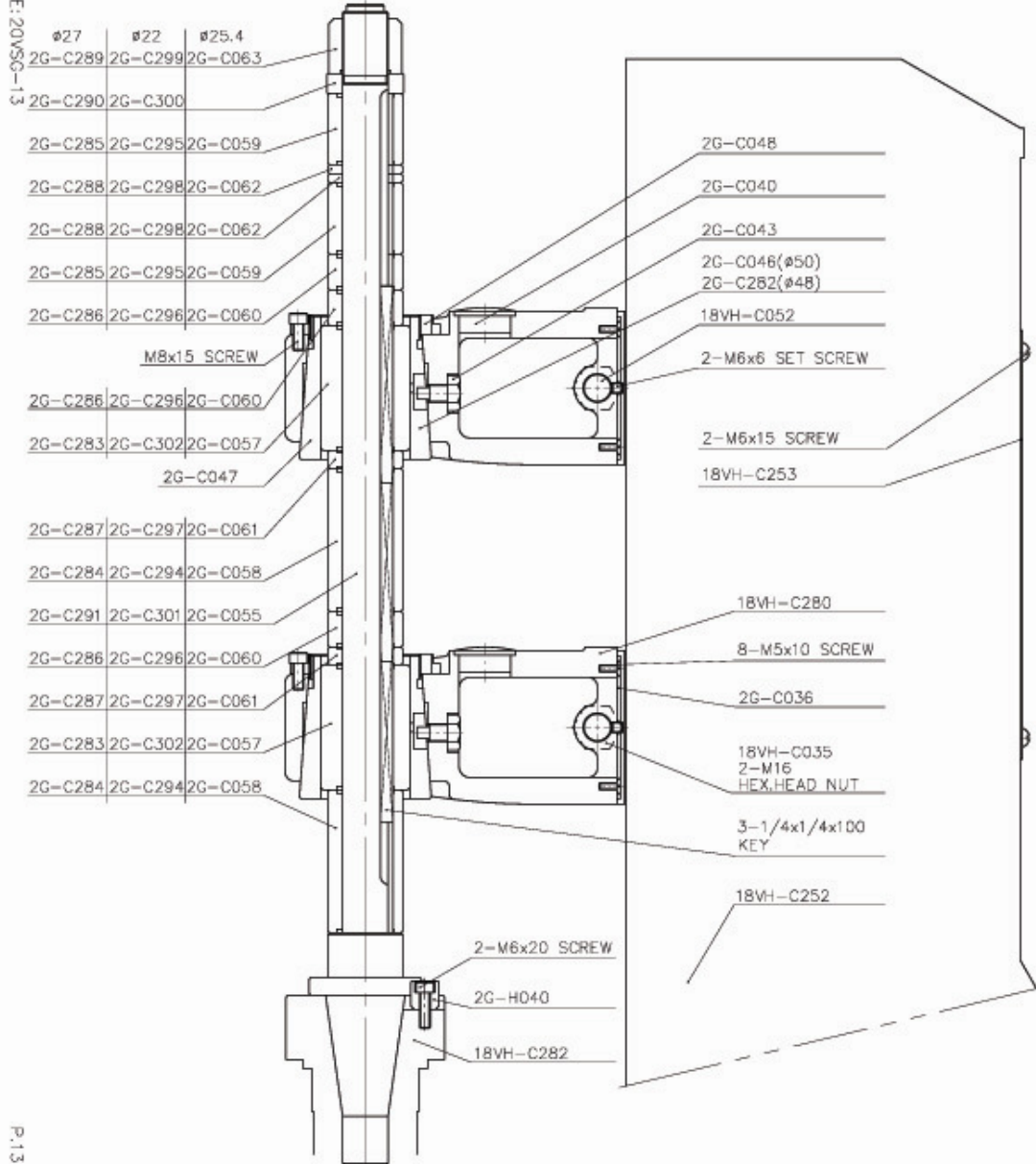


PARTS NO	PC	DESCRIPTION	REMARKS	
1	18VH-C035	2	FLAT WASHER	
2	18VH-C280	2	ARBOR SUPPORTER	
3	18VH-C052	2	ARBOR SUPPORTER LOCK BOLT	
4	18VH-C282	1	HORIZONTAL SPINDLE	
5	18VH-C252	1	OVERARM	
6	18VH-C253	2	COVER	
7	2G-H040	2	ARBOR DRIVER	
8	2G-C036	2	COVER	
9	2G-C040	2	OIL NUT	
10	2G-C043	2	LEAK OIL BOLT	
11	2G-C046	2	ADAPTER SLEEVE ( 50)	
12	2G-C047	2	BAKELITE LINER	
13	2G-C048	2	SCREW	
14				
15	∅ 27			
16	2G-C283	2	ARBOR BEARING COLLARS	
17	2G-C284	2	ARBOR COLLARS	
18	2G-C285	2	ARBOR COLLARS	
19	2G-C286	3	ARBOR COLLARS	
20	2G-C287	2	ARBOR COLLARS	
21	2G-C288	2	ARBOR COLLARS	
22	2G-C289	1	ARBOR NUT	
23	2G-C290	1	ARBOR NUT COLLARS	
24	2G-C291	1	ARBOR	
25				
26	∅ 22			
27	2G-C294	2	ARBOR COLLARS	
28	2G-C295	2	ARBOR COLLARS	
29	2G-C296	3	ARBOR COLLARS	
30	2G-C297	2	ARBOR COLLARS	
31	2G-C298	2	ARBOR COLLARS	
32	2G-C299	1	ARBOR NUT	
33	2G-C300	1	ARBOR NUT COLLARS	
34	2G-C301	1	ARBOR	
35	2G-C302	2	ARBOR BEARING COLLARS	



PARTS NO		PC	DESCRIPTION	REMARKS
1	∅ 25.4			
2	2G-C055	1	ARBOR	
3	2G-C057	2	ARBOR BEARING COLLARS	
4	2G-C058	2	ARBOR COLLARS	
5	2G-C059	2	ARBOR COLLARS	
6	2G-C060	3	ARBOR COLLARS	
7	2G-C061	2	ARBOR COLLARS	
8	2G-C062	2	ARBOR COLLARS	
9	2G-C063	1	ARBOR NUT	
10	2G-C282	2	ADAPTER SLEEVE ( <del>48</del> )	
11				
12				

FILE NAME: 20VMSG-13

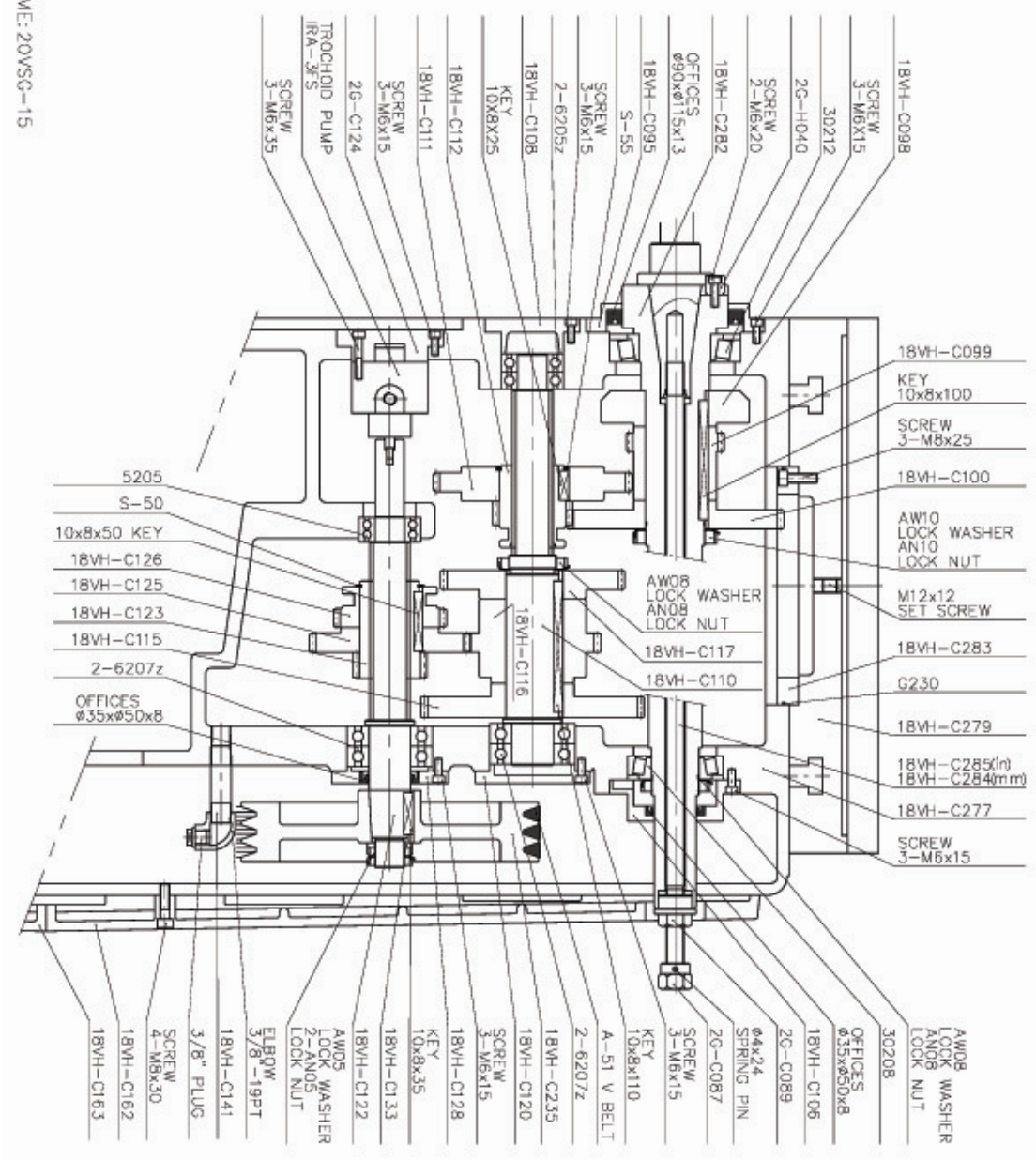




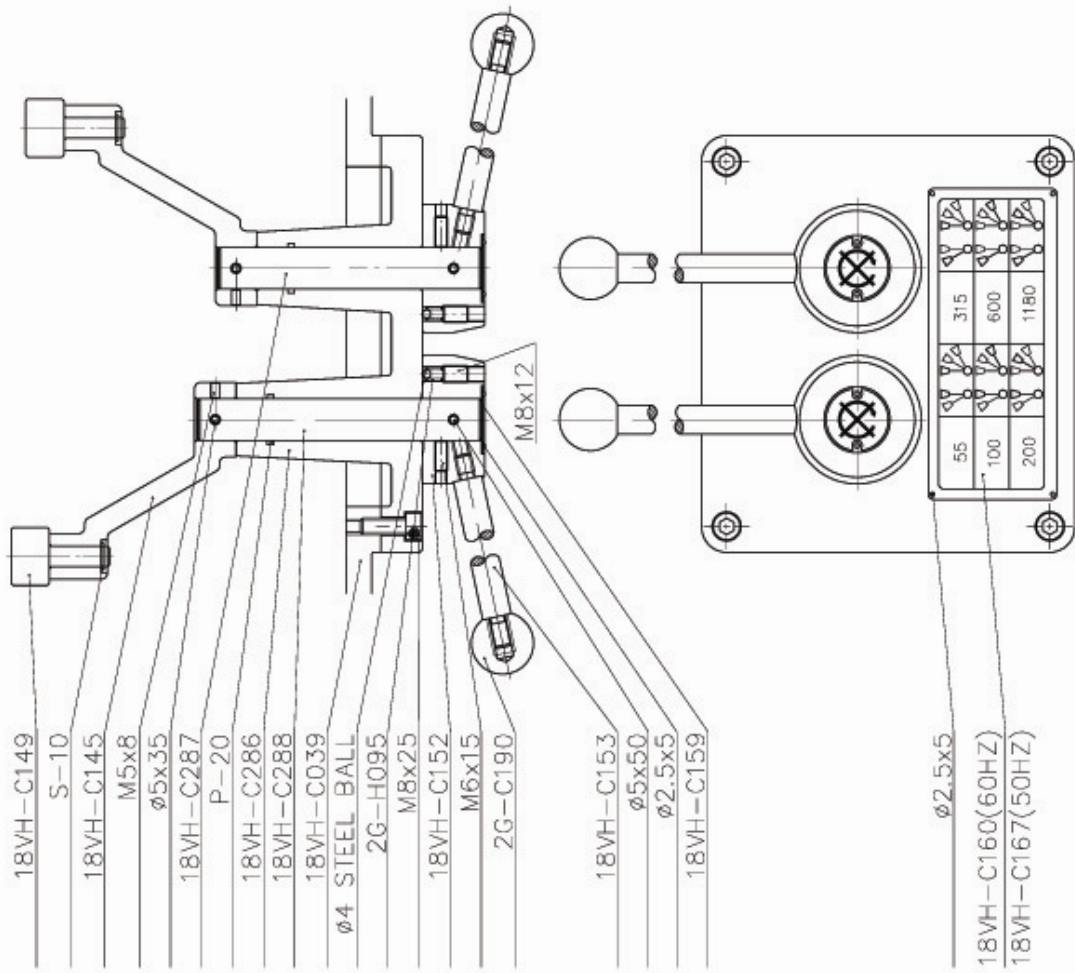
PARTS NO	PC	DESCRIPTION	REMARKS
1	18VH-C279	1	TURRET
2	18VH-C283	1	TURRET ROTARY RING
3	18VH-C282	1	HORIZONTAL SPINDLE
4	18VH-C095	1	HORIZONTAL SPINDLE FRONT BRG.
5	18VH-C098	1	HORIZONTAL SPINDLE BALANCER
6	18VH-C099	1	HORIZONTAL SPINDLE PINION
7	18VH-C100	1	HORIZONTAL SPINDLE GEAR
8	106H-C106	1	HORIZONTAL SPINDLE BEAR BRG. COVER
9	18VH-C108	1	COUNTER SHAFT FRONT BRG. COVER
10	18VH-C110	1	COUNTER SHAFT
11	18VH-C111	1	COUNTER SHAFT SHIFT GEAR WHEEL
12	18VH-C112	1	COUNTER SHAFT SHIFT PINION
13	18VH-C115	1	COUNTER SHAFT DRIVE GEAR WHEEL
14	18VH-C116	1	COUNTER SHAFT DRIVER PINION
15	18VH-C117	1	COUNTER SHAFT DRIVER MID GEAR
16	18VH-C120	1	COUNTER SHAFT REAR BRG. COVER
17	18VH-C122	1	DOWN GEAR SHAFT
18	18VH-C123	1	DOWN SHAFT SHIFT PINION
19	18VH-C125	1	DOWN SHAFT SHIFT GEAR WHEEL
20	18VH-C126	1	DOWN SHAFT SHIFT MID GEAR
21	18VH-C128	1	DOWN SHAFT REAR BRG. COVER
22	18VH-C133	1	WASHER
23	18VH-C141	1	LEAK OIL PIPE
24	18VH-C162	1	UPPER COLUMN REAR COVER
25	18VH-C163	1	DOWN COLUMN REAR COVER
26	18VH-C235	1	TRANSMISSION PULLEY
27	18VH-C277	1	COLUMN
28	18VH-C285	1	DRAWBAR KNOB (in)
29	18VH-C284	1	DRAWBAR KNOB (mm)
30			
31	2G-H040	1	ARBOR DRIVER
32	2G-C087	1	SPECIAL LOCK NUT
33	2G-C089	1	DRAWBAR LOCK NUT
34	2G-C124	1	PUMP HUB
35			



FILE NAME:20VSG-15

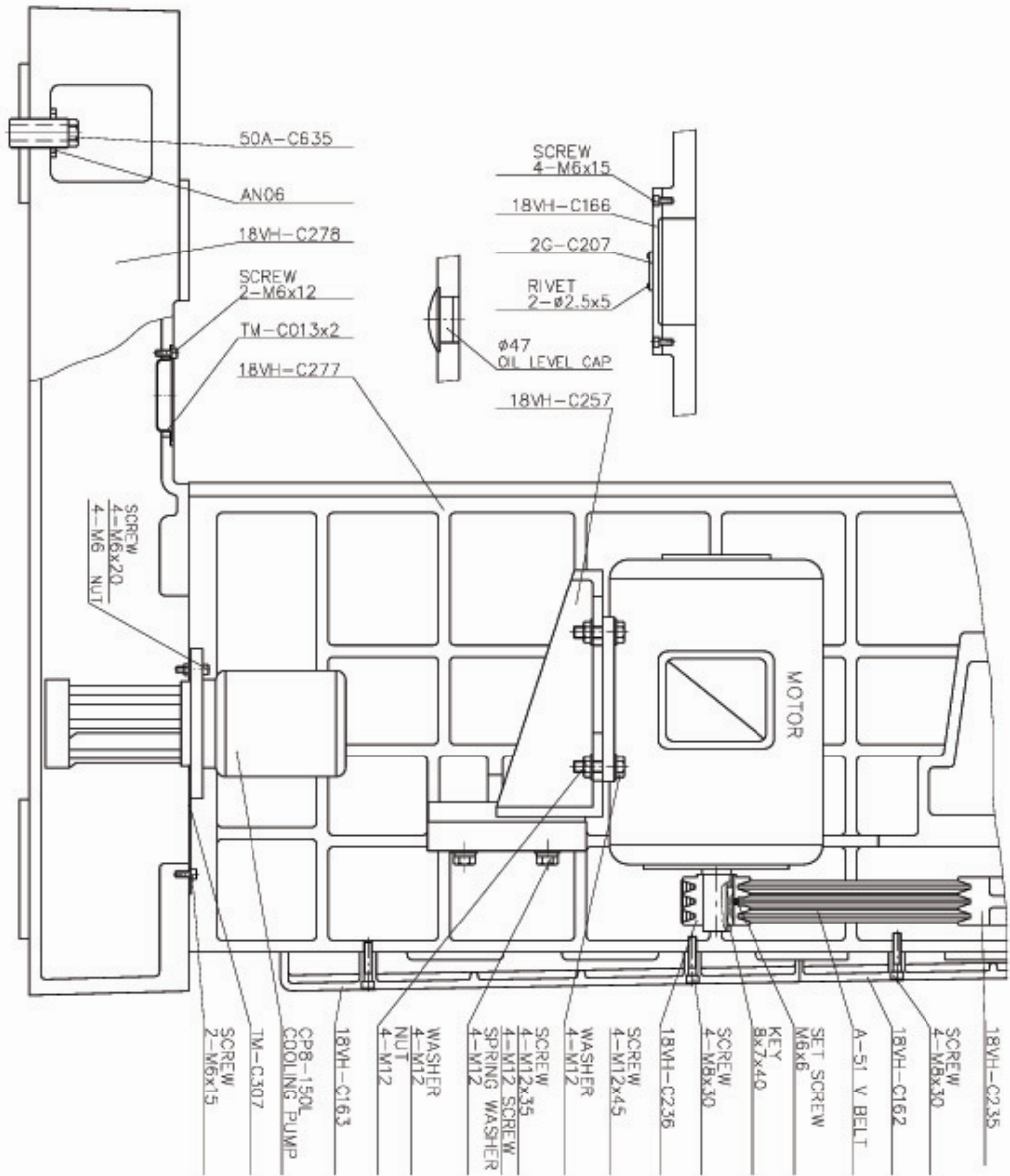


PARTS NO	PC	DESCRIPTION	REMARKS
1	18VH-C039	1 COLUMN	
2	18VH-C286	1 SHIFT CRANK SUPPORTER	
3	18VH-C145	2 SHIFTING CRANK	
4	18VH-C288	1 UPPER SHIFT CRANK SHAFT	
5	18VH-C149	2 SHIFTING YOKE	
6	18VH-C287	1 DOWN SHIFT CRANK SHAFT	
7	18VH-C152	2 SHIFT HANDLE HUB	
8	18VH-C153	2 SHIFT HANDLE	
9	18VH-C159	2 SPEED CHANGE WARNING PLATE	
10	18VH-C160	1 VARI SPEED DIAL	
11	2G-H095	2 SPRING	
12	2G-C190	2 BLACK PLASTIC BALL GRIP	



PARTS NO	PC	DESCRIPTION	REMARKS	
1	18VH-C162	1	UPPER COLUMN REAR COVER	
2	18VH-C163	1	DOWN COLUMN REAR COVER	
3	18VH-C166	1	COLUMN LEFT COVER	
4	18VH-C235	1	TRANSMISSION PULLEY	
5	18VH-C236	1	MOTOR PULLEY	
6	18VH-C257	1	MOTOR SUPPORTER	
7	18VH-C278	1	BASE	
8	18VH-C277	1	COLUMN	
9				
10	TM-C013	2	OIL FILTER	
11	TM-C307	1	COOLINE PUMP PLATE	
12				
13	2G-C207	1	OIL QUANTITY INDICATE PLATE	
14				
15				
16				
17				
18				
19				
20				
21				
22				
23				
24				
25				
26				
27				
28				
29				
30				
31				
32				
33				
34				
35				

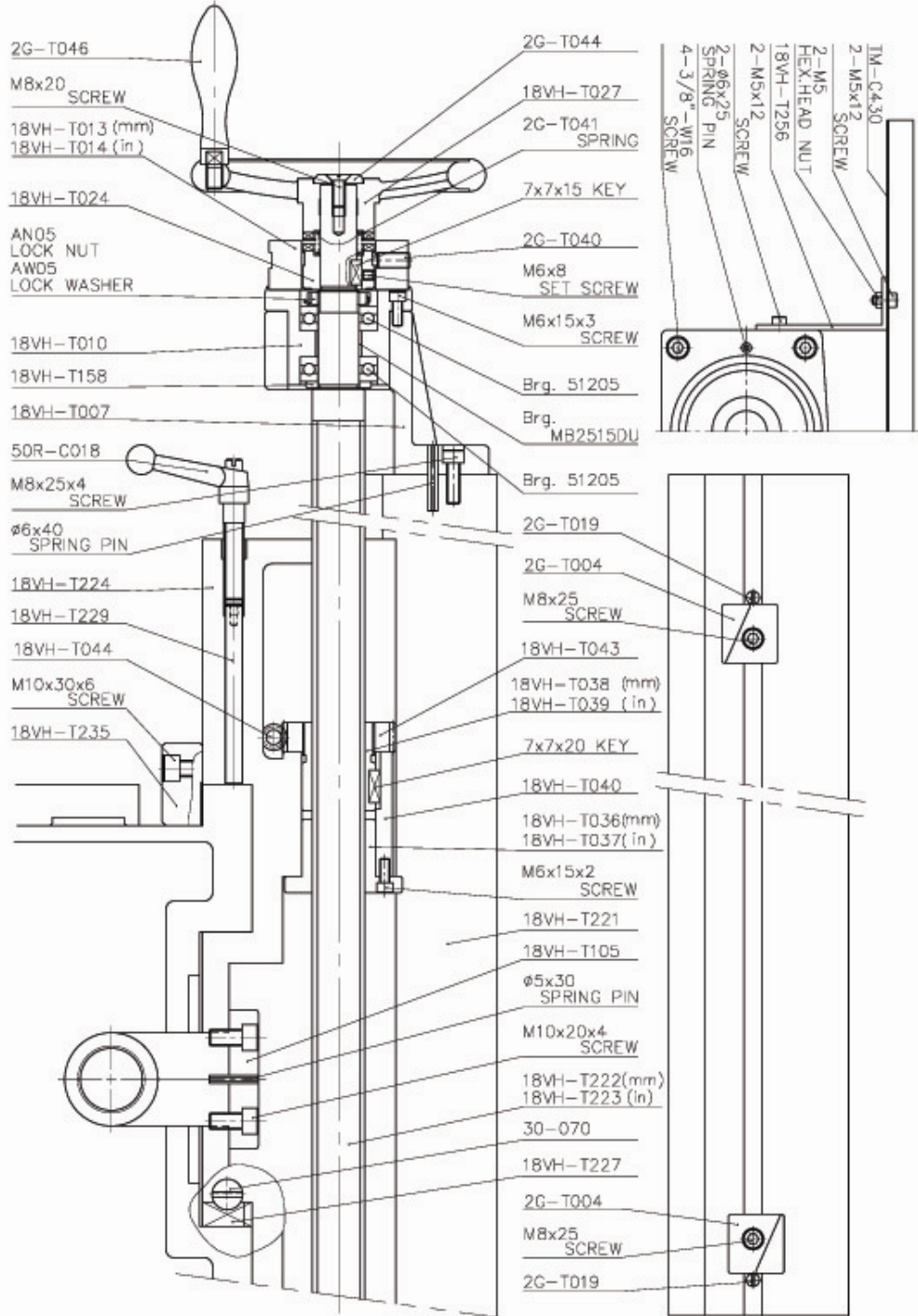
FILE NAME: 20VSG-19





PARTS NO	PC	DESCRIPTION	REMARKS	
1	18VH-T007	1	LONGITUDINAL FEED SCREW BRACKET	
2	18VH-T010	1	LEFT DIAL INDICATOR	
3				
4	18VH-T013	1	DIAL (mm)	
5	18VH-T014	1	DIAL (in)	
6	18VH-T024	1	CLUTCH	
7	18VH-T027	1	HANDWHEEL	
8	18VH-T036	1	LONGITUDINAL FEED NUT (mm)	
9	18VH-T037	1	LONGITUDINAL FEED NUT (in)	
10	18VH-T038	1	SCREW ADJUSTING NUT (mm)	
11	18VH-T039	1	SCREW ADJUSTING NUT (in)	
12	18VH-T040	1	LONGITUDINAL FEED NUT COVER	
13	18VH-T043	1	BACKLASH ADJUSTING HELICAL GEAR	
14	18VH-T044	1	BACKLASH ADJUSTING WORM	
15	18VH-T105	1	CROSS FEED NUT BRACKET	
16	18VH-T158	1	THRUST WASHER	
17	18VH-T221	1	TABLE	
18	18VH-T222	1	LONGITUDINAL FEED SCREW (mm)	
19	18VH-T223	1	LONGITUDINAL FEED SCREW (in)	
20	18VH-T224	1	SADDLE	
21	18VH-T227	1	SADDLE-KNEE GIB	
22	18VH-T229	1	SADDLE STOPPER	
23	18VH-T235	1	BACK PLATE	
24	18VH-T256	1	SUPPORTER PLATE	
25	2G-T004	2	TABLE FEED STOP DOG	
26	2G-T019	2	STOP SCREW	
27	2G-T040	1	DIAL SCREW	
28	2G-T041	1	COMPRESSION SPRING	
29	2G-T044	1	FLAT WASHER	
30	2G-T046	1	HANDLE	
31	TM-C430	1	CHIP GUARD RUBBER	
32	30-070	1	GIB ADJUSTING SCREW	
33	50R-C018	1	LOCK HANDLE	

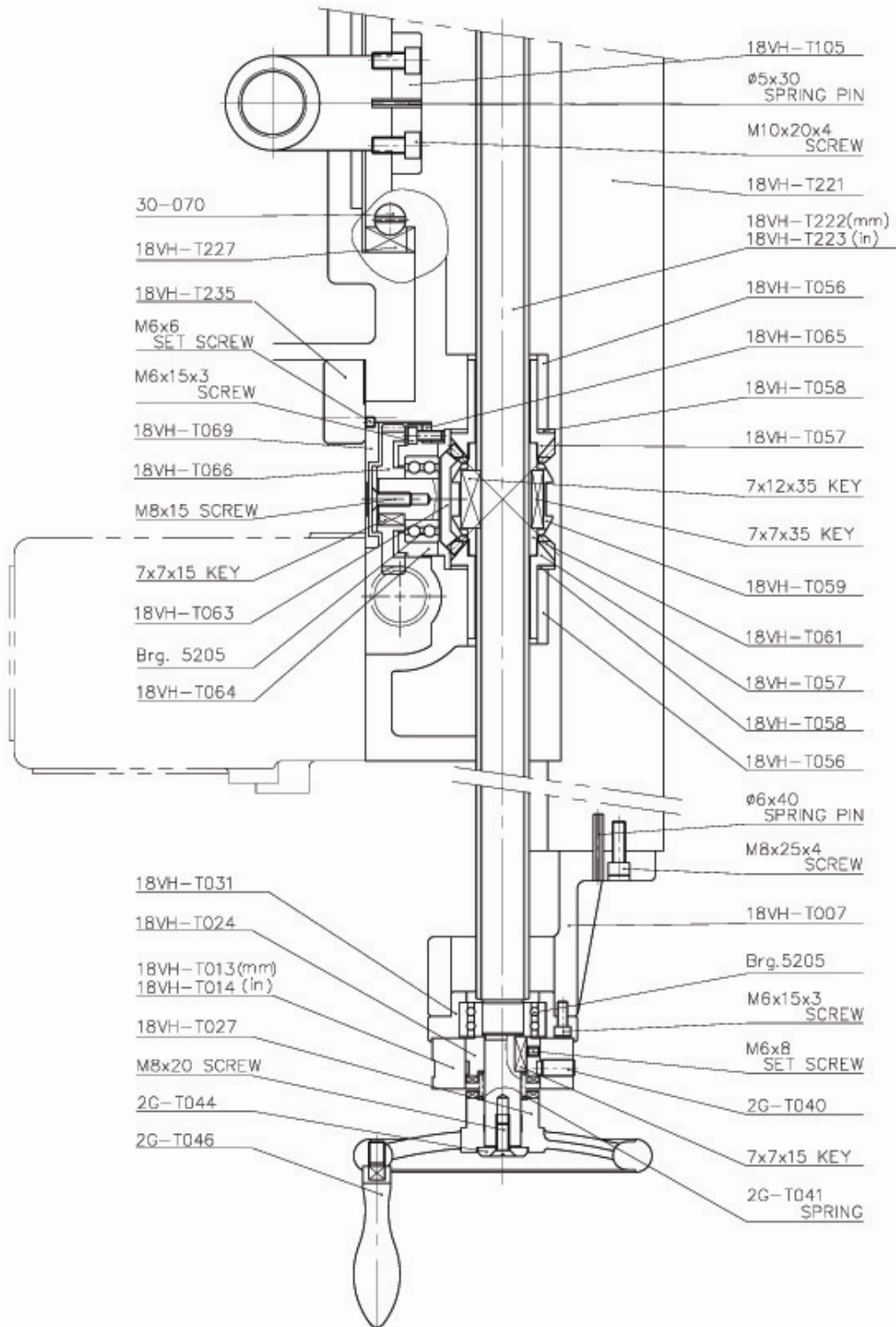
FILE NAME: 20VSG-21





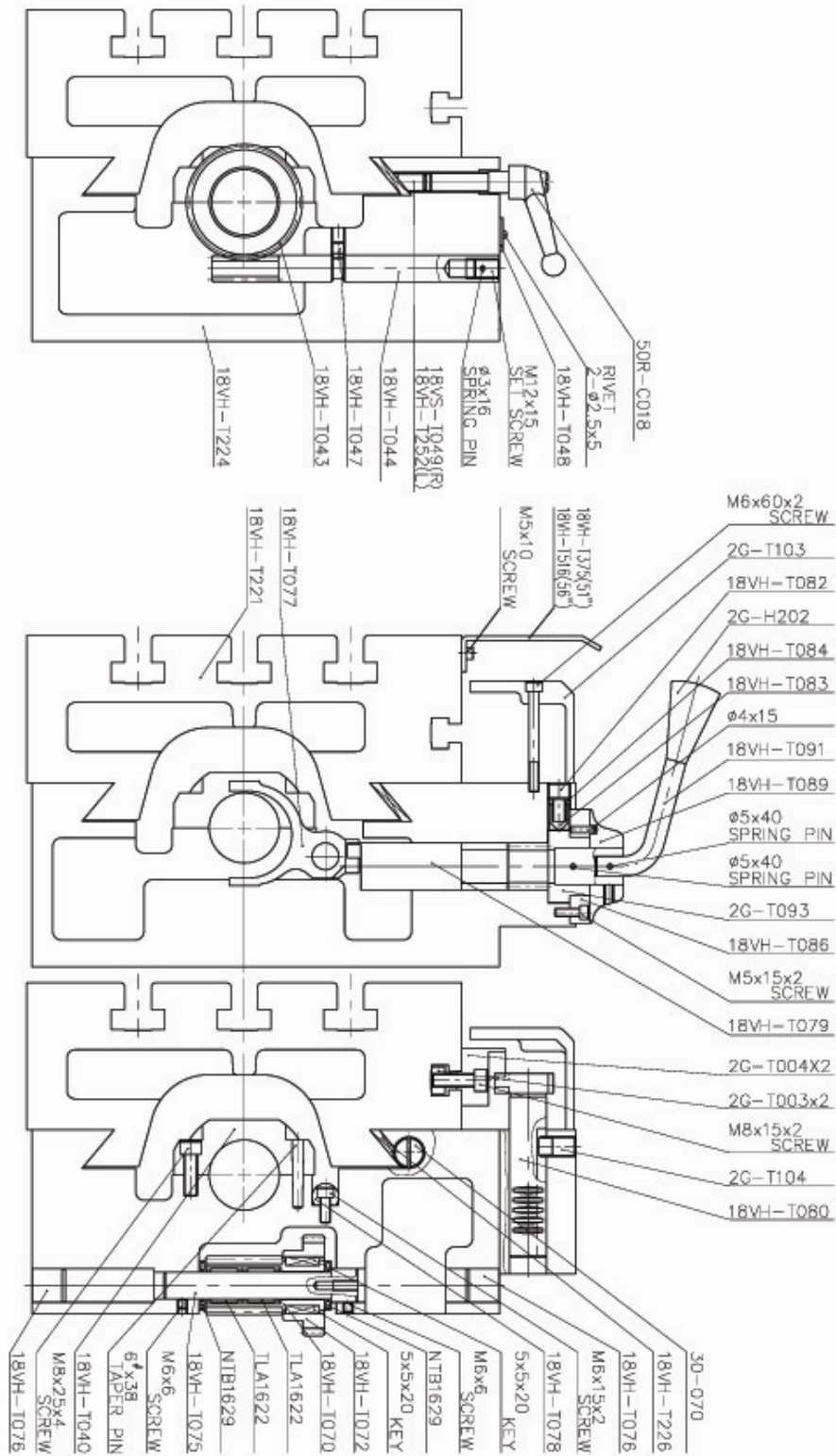
PARTS NO	PC	DESCRIPTION	REMARKS	
1	18VH-T007	1	LONGITUDINAL FEED SCREW BRACKET	
2	18VH-T013	1	DIAL (mm)	
3	18VH-T014	1	DIAL (in)	
4	18VH-T024	1	CLUTCH	
5	18VH-T027	1	HANDWHEEL	
6	18VH-T031	1	RIGHT DIAL INDICATOR	
7				
8	18VH-T056	2	BEVEL GEAR COVER	
9	18VH-T057	2	CLUTCH BEVEL GEAR	
10	18VH-T058	2	SPACER	
11	18VH-T059	1	AUTO FEED CLUTCH	
12	18VH-T061	1	CLUTCH BUSHING	
13	18VH-T063	1	DRIVE BEVEL GEAR	
14	18VH-T064	1	BEARING BRACKET	
15	18VH-T065	1	SPACER	
16	18VH-T066	1	HELICAL GEAR	
17	18VH-T069	1	HOLE PLUNGER	
18	18VH-T105	1	CROSS FEED NUT BRACKET	
19	18VH-T221	1	TABLE	
20	18VH-T222	1	LONGITUDINAL FEED SCREW (mm)	
21	18VH-T223	1	LONGITUDINAL FEED SCREW (in)	
22	18VH-T227	1	SADDLE-KNEE GIB	
23	18VH-T235	1	BACK PLATE	
24	2G-T040	1	DIAL SCREW	
25	2G-T041	1	COMPRESSION SPRING	
26	2G-T044	1	FLAT WASHER	
27	2G-T046	1	HANDLE	
28	30-070	1	GIB ADJUSTING SCREW	

FILE NAME: 20VSG-23



P.23

PARTS NO	PC	DESCRIPTION	REMARKS	
1	18VH-T040	1	NUT COVER	
2	18VH-T043	1	BACKLASH ADJUSTING HELICAL GEAR	
3	18VH-T044	1	BACKLASH ADJUSTING WORM	
4	18VH-T047	1	SOCKET SET SCREW	
5	18VH-T048	1	BACKLASH ADJUST PLATE	
6	18VH-T070	1	DRIVE HELICAL PINION	
7	18VH-T072	1	AUTO FEED DRIVE GEAR	
8	18VH-T075	1	HELICAL PINION SHAFT	
9	18VH-T076	2	HOLE PLUNGER	
10	18VH-T077	1	SHIFTER YOKE	
11	18VH-T078	1	SHIFTER YOKE SHAFT	
12	18VH-T079	1	AUTO FEED DIRECTION-CRANK SHAFT	
13	18VH-T080	1	STOP RACK	
14	18VH-T082	1	SPRING PLUNGER	
15	18VH-T083	1	PLUNGER	
16	18VH-T084	1	COMPRESSION SPRING	
17	18VH-T086	1	DIRECTION INDICATOR RING	
18	18VH-T089	1	DIRECTION INDICATE RING	
19	18VH-T091	1	CRANK HANDLE	
20	18VH-T221	1	TABLE	
21	18VH-T224	1	SADDLE	
22	18VH-T226	1	TABLE-SADDLE GIB	
23	18VH-T252	1	LOCK PLUNGER (L)	
24	18VH-T049	1	LOCK PLUNGER (R)	
25	2G-T003	2	STOP DOG NUT	
26	2G-T004	2	TABLE FEED STOP DOG	
27	2G-T093	1	ORIENTATION FORK	
28	2G-T103	1	STOP RACK COVER	
29	2G-T104	1	RACK SCREW	
30	2G-H202	1	GRIP	
31	50R-C018	1	LOCK HANDLE	
32	30-070	1	GIB ADJUSTING SCREW	



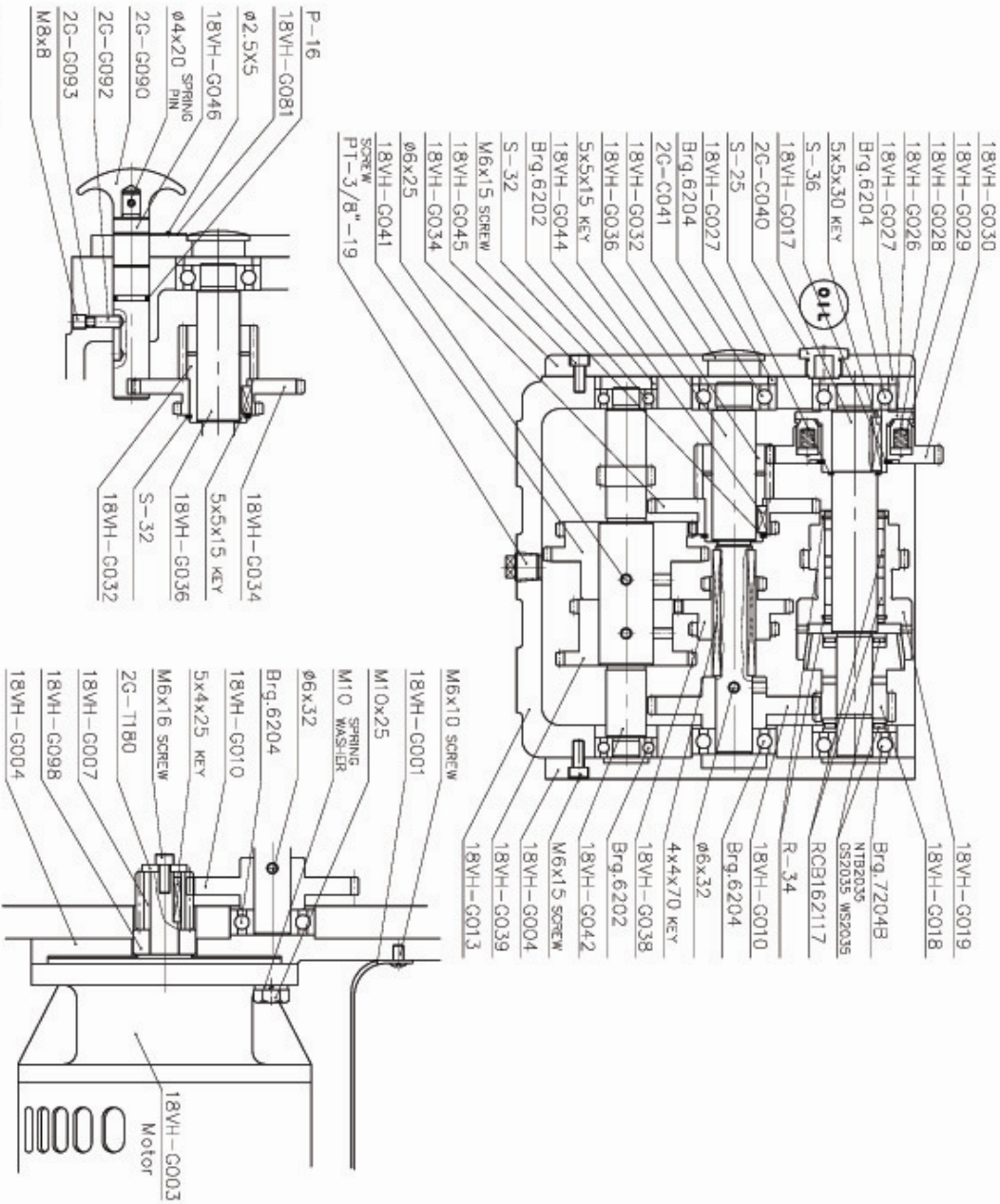
FILE NAME:20VSG-25

P.25



PARTS NO	PC	DESCRIPTION	REMARKS
1	18VH-G001	1	MOTOR COVER
2	18VH-G003	1	MOTOR
3	18VH-G004	1	MOTOR SUPPORTER
4	18VH-G007	1	MOTOR GEAR
5	18VH-G010	1	MOTOR DRIVING GEAR
6	18VH-G013	1	GEAR HOUSING
7	18VH-G017	1	UPPER GEAR SHAFT
8	18VH-G018	1	RAPID DRIVING GEAR
9	18VH-G019	1	SPEED CHANGE CLUTCH
10	18VH-G026	1	SAFETY DEVICE COLLAR
11	18VH-G027	2	SPACER
12	18VH-G028	6	SAFETY DEVICE PLUNGER
13	18VH-G029	6	COMPRESSION SPRING
14	18VH-G030	1	UPPER DRIVING GEAR
15	18VH-G032	1	TWO-SPEED SHIFT GEAR
16	18VH-G034	1	TWO-SPEED SHIFT GEAR
17	18VH-G036	1	COUNTERSHAFT
18	18VH-G038	1	THREE-SPEED SHIFT GEAR
19	18VH-G039	1	DOWN-RIGHT DRIVING GEAR
20	18VH-G041	1	DOWN-LEFT DRIVING GEAR
21	18VH-G042	1	DOWN GEAR SHAFT
22	18VH-G044	1	BEARING SPACER
23	18VH-G045	1	FRONT COVER
24	18VH-G046	1	GEAR SHIFTING LEVER
25	18VH-G081	1	PLATE
26	18VH-G098	1	MOTOR GEAR SPACER
27	2G-C040	2	OIL NUT
28	2G-C041	3	OIL GAGE
29	2G-C090	1	HORIZONTAL SPINDLE
30	2G-C092	1	BEARING COVER
31	2G-C093	1	V-OIL SEAL
32	2G-T180	1	FLAT WASHER
33			
34			
35			

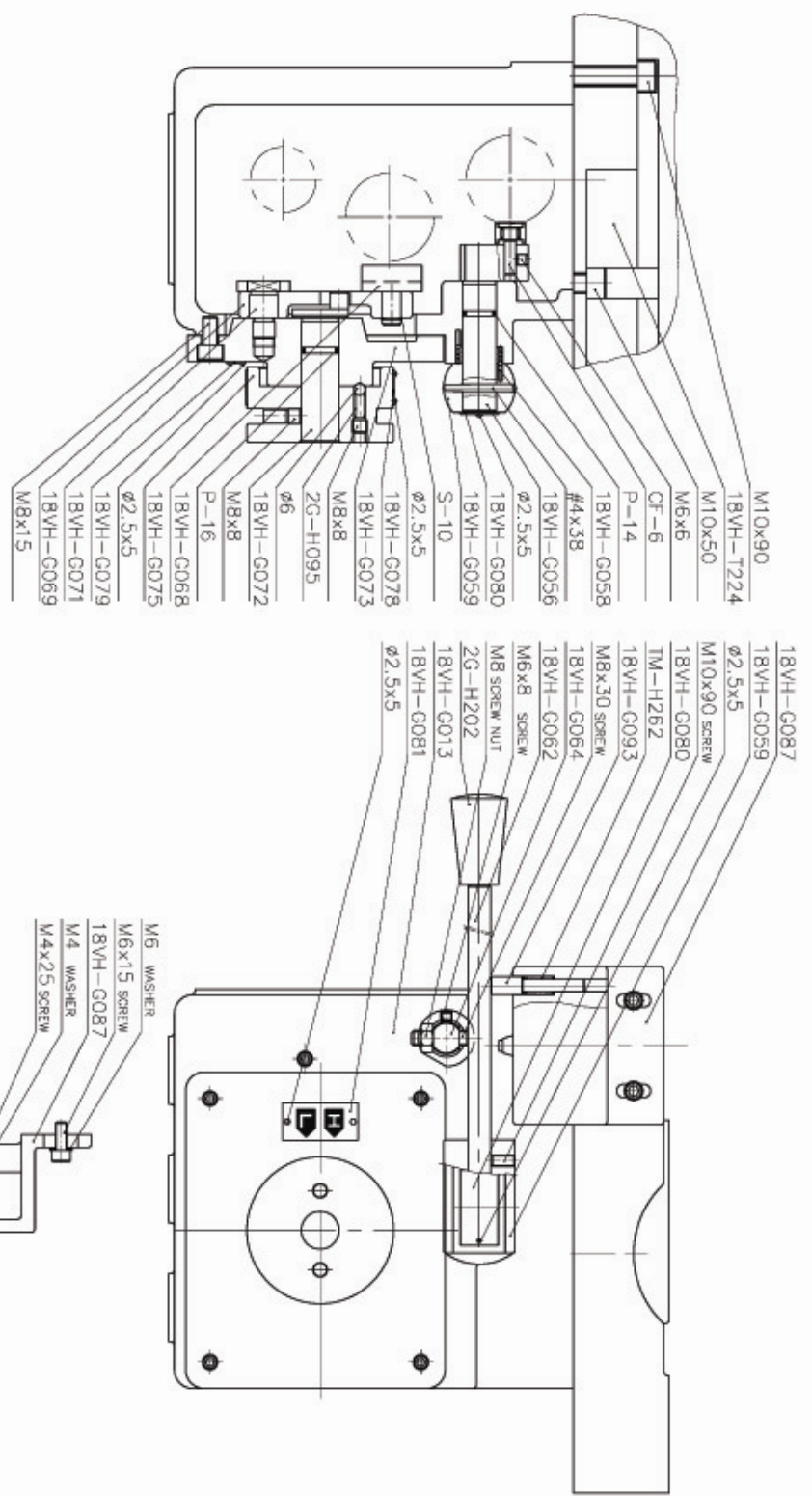
FILE NAME: 20VSG-27



PARTS NO	PC	DESCRIPTION	REMARKS
1	18VH-G013	1	GEAR HOUSING
2	18VH-G056	1	SHIFTING CRANK
3	18VH-G058	1	SPRING
4	18VH-G059	1	SHIFT HANDLE HUB
5	18VH-G062	1	HANDLE
6	18VH-G064	1	STRUT
7	18VH-G068	1	SHIFTING YOKE
8	18VH-G069	1	SHIFTING CRANK
9	18VH-G071	1	CRANK STUD
10	18VH-G072	1	SHIFTING CRANK SHAFT
11	18VH-G073	1	GEAR HOUSING COVER
12	18VH-G075	1	SHIFTING HANDWHEEL
13	18VH-G078	1	VARI SPEED PLATE
14	18VH-G079	1	PLATE
15	18VH-G080	1	HI-LOW SPEED PLATE
16	18VH-G081	1	PLATE
17	18VH-G087	1	LIMIT SWITCH HOLDER
18	18VH-G093	1	HANDLE STOP STUD
19	18VH-T224	1	SADDLE
20	2G-C040	2	OIL NUT
21	2G-H095	1	SPRING
22	2G-H202	1	GRIP
23	TM-H262	1	SPRING
24			
25			
26			
27			
28			
29			
30			
31			
32			
33			
34			
35			



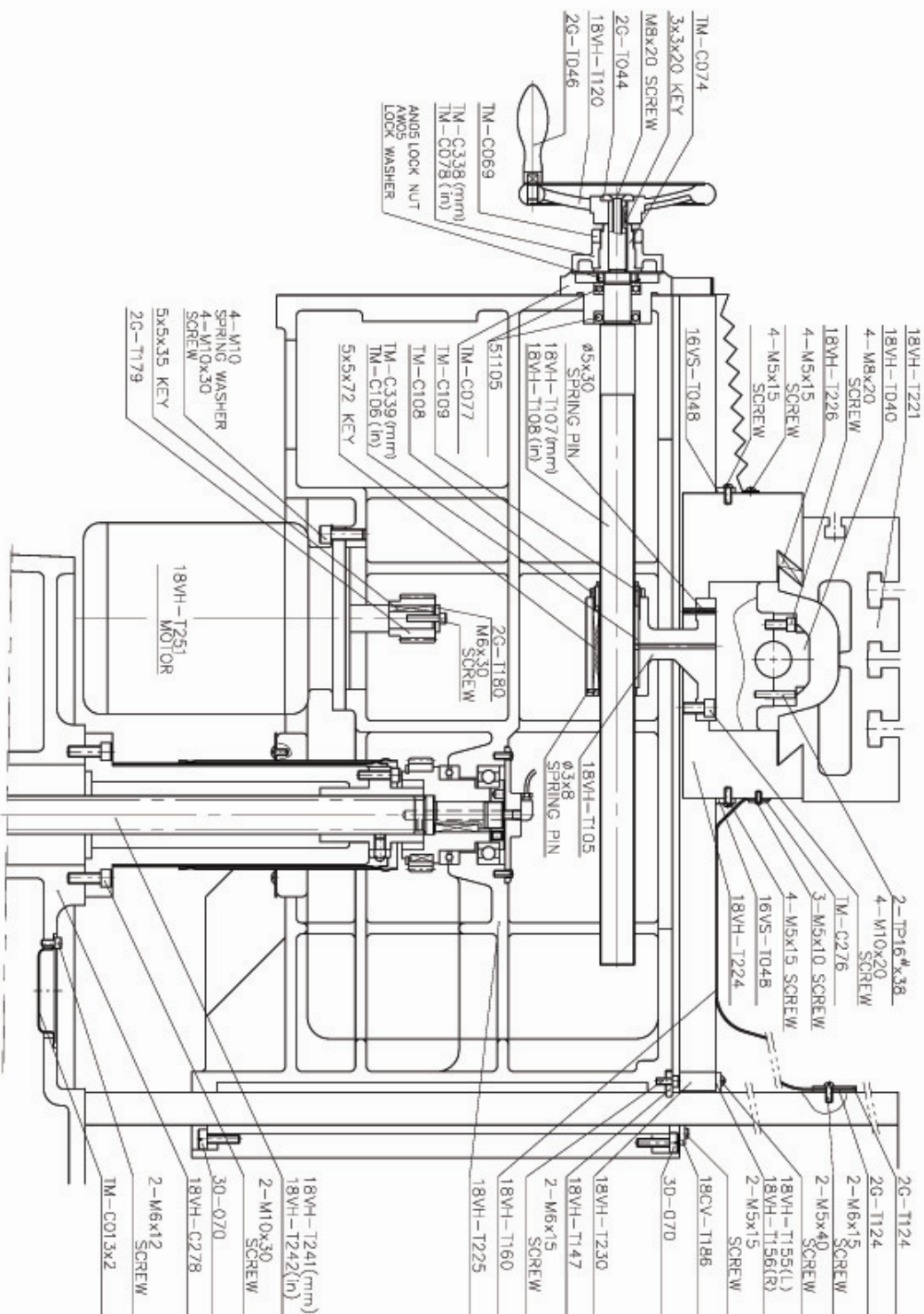
FILE NAME: 20V5G-29



PARTS NO	PC	DESCRIPTION	REMARKS
1	18VH-T040	1	LONGITUDINAL FEED NUT COVER
2	18VH-T105	1	CROSS FEED NUT BRACKET
3	18VH-T107	1	CROSS FEED SCREW (mm)
4	18VH-T108	1	CROSS FEED SCREW (in)
5	18VH-T120	1	HANDWHEEL
6	18VH-T155	1	COLUMN WIPER (L)
7	18VH-T156	1	COLUMN WIPER (R)
8	18VH-T160	1	CHIP GUARD RUBBER
9	18VH-T221	1	TABLE
10	18VH-T224	1	SADDLE
11	18VH-T225	1	KNEE
12	18VH-T226	1	TABLE-SADDLE GIB
13	18VH-T230	1	WIPER FIXED BLOCK
14	18VH-T278	1	ELEVATING SCREW (mm)
15	18VH-T242	1	ELEVATING SCREW (in)
16	18VH-T251	1	MOTOR
17	18VH-C241	1	BASE
18			
19			
20			
21			
22	TM-C013	2	OIL FILTER
23	TM-C069	1	DIAL LOCK NUT
24	TM-C074	1	DIAL HOLDER
25	TM-C077	1	CROSS FEED BEARING BRACKET
26	TM-C338	1	DIAL (mm)
27	TM-C078	1	DIAL (in)
28	TM-C339	1	CROSS FEED NUT (mm)
29	TM-C106	1	CROSS FEED NUT (in)
30	TM-C108	1	LOCK NUT
31	TM-C109	1	SCREW ADJUSTING NUT
32	TM-C276	1	CHIP GUARD RUBBER PLATE
33			
34			
35			

PARTS NO		PC	DESCRIPTION	REMARKS
1	2G-T044	1	FLAT WASHER	
2	2G-T046	1	HANDLE	
3	2G-T124	2	CHIP GUARD RUBBER PLATES	
4	2G-T179	1	MOTOR GEAR (OPTION)	
5	2G-T180	1	FLAT WASHER	
6				
7	18CV-T186	1	WIPER	
8	18VH-T147	1	WIPER	
9				
10	16VS-T048	2	WIPER	
11				
12	30-070	2	GIB ADJUSTING SCREW	
13				

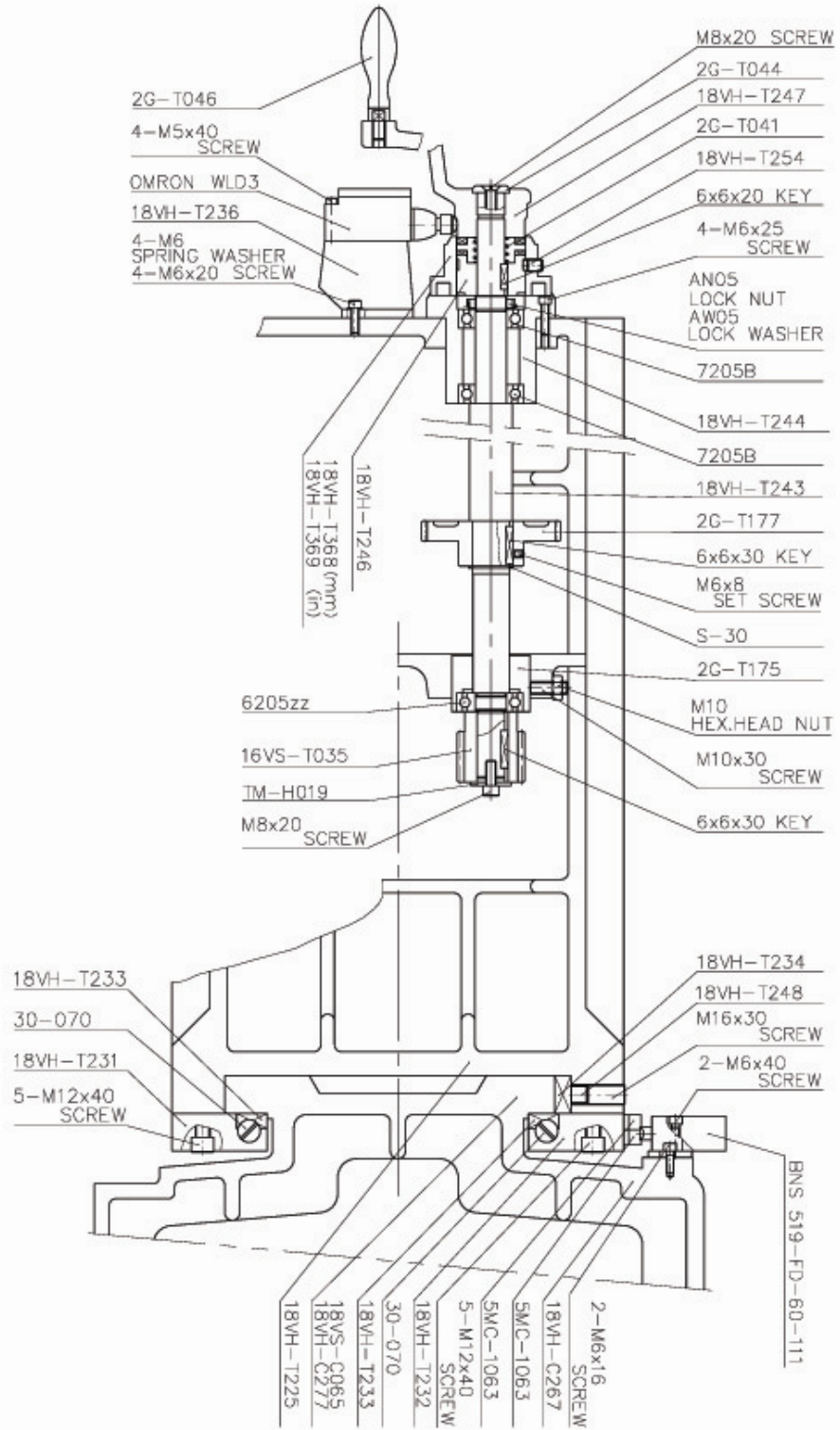
FILE NAME: 20VSG-32



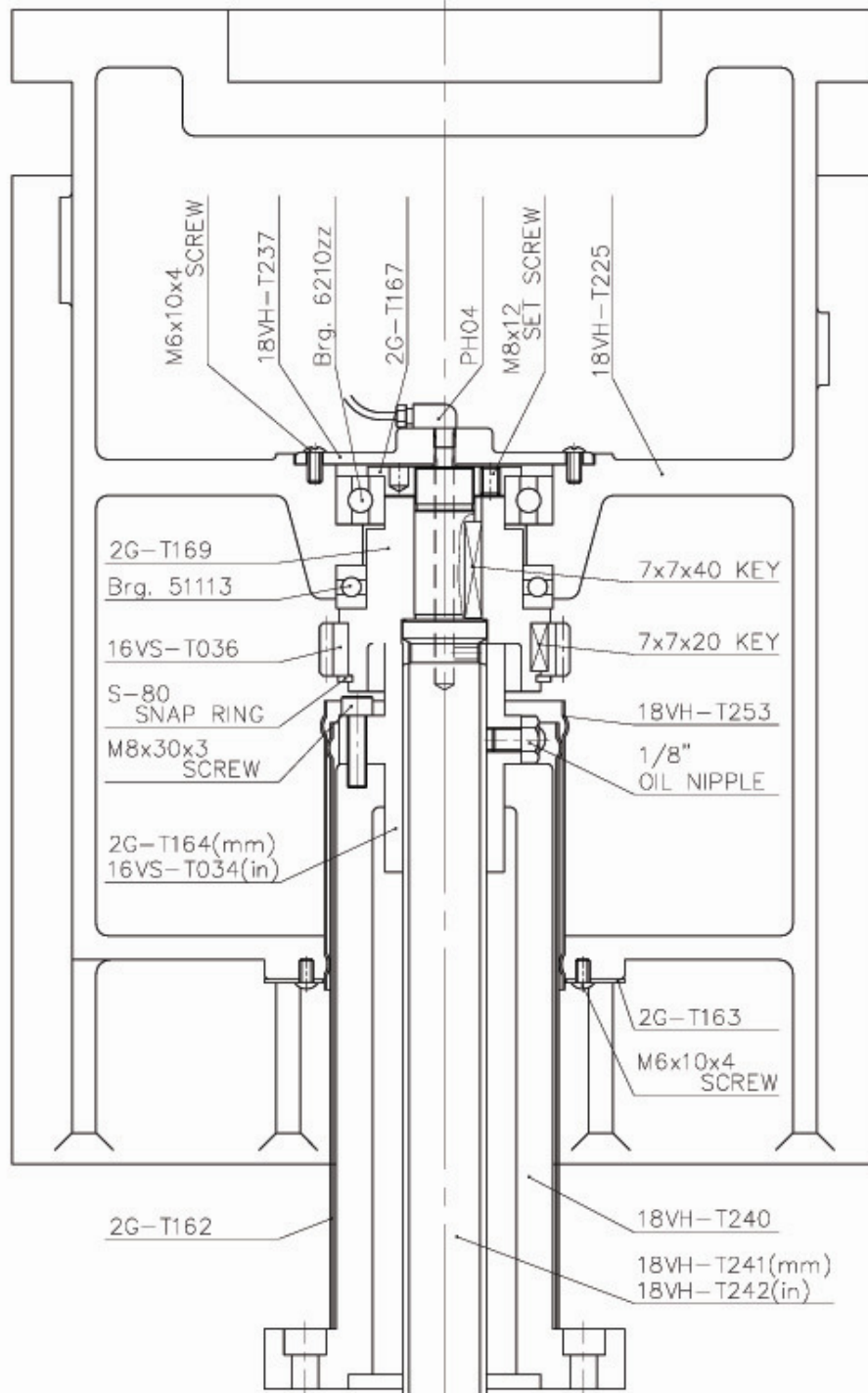
PARTS NO	PC	DESCRIPTION	REMARKS
1	18VH-T225	1	KNEE
2	18VH-T231	1	COLUMN GIB HOLDER (R)
3	18VH-T232	1	COLUMN GIB HOLDER (L)
4	18VH-T233	2	COLUMN GIB
5	18VH-T234	1	KNEE GIB
6	18VH-T236	1	LIMIT SWITCH BASE
7	18VH-T243	1	GEAR SHAFT FOR KNEE
8	18VH-T244	1	BEARING BRACKET
9			
10	18VH-T246	1	CLUTCH
11	18VH-T247	1	ELEVATING CRANK
12	18VH-T248	1	LOCK PLUNGER
13	18VH-T254	1	DIAL SCREW
14	18VH-C277	1	COLUMN (VERTICAL HORIZONTAL)
15	18VH-C267	1	LIMIT SWITCH BASE
16			
17	2G-T041	1	COMPRESSION SPRING
18	2G-T044	1	FLAT WASHER
19	2G-T046	1	HANDLE
20	2G-T175	1	BEARING CUP
21	2G-T177	1	DRIVEN GEAR
22			
23	18VH-T368	1	DIAL (mm)
24	18VH-T369	1	DIAL (in)
25			
26	16VS-T035	1	HELICAL PINION
27	18VS-C065	1	COLUMN (VERTICAL)
28			
29	TM-H019	1	MOTOR PULLEY WASHER
30			
31	5MC-1063	2	OT DOG
32			
33	30-070	2	GIB ADJUSTING SCREW



FILE NAME: 20VSG-34







# SHARP

## PARTS LIST

### VH-25 HEAD SERIES

2180-7721-100 A01

Machine Type :

Machine Number :

Approve:

Drawn	Approve	Date	Edition	Note
			A01	VH-25 HEAD SERIES

SHARP INDUSTRIES, INC.

3501 CHALLENGER STREET

TORRANCE, CALIFORNIA 90503

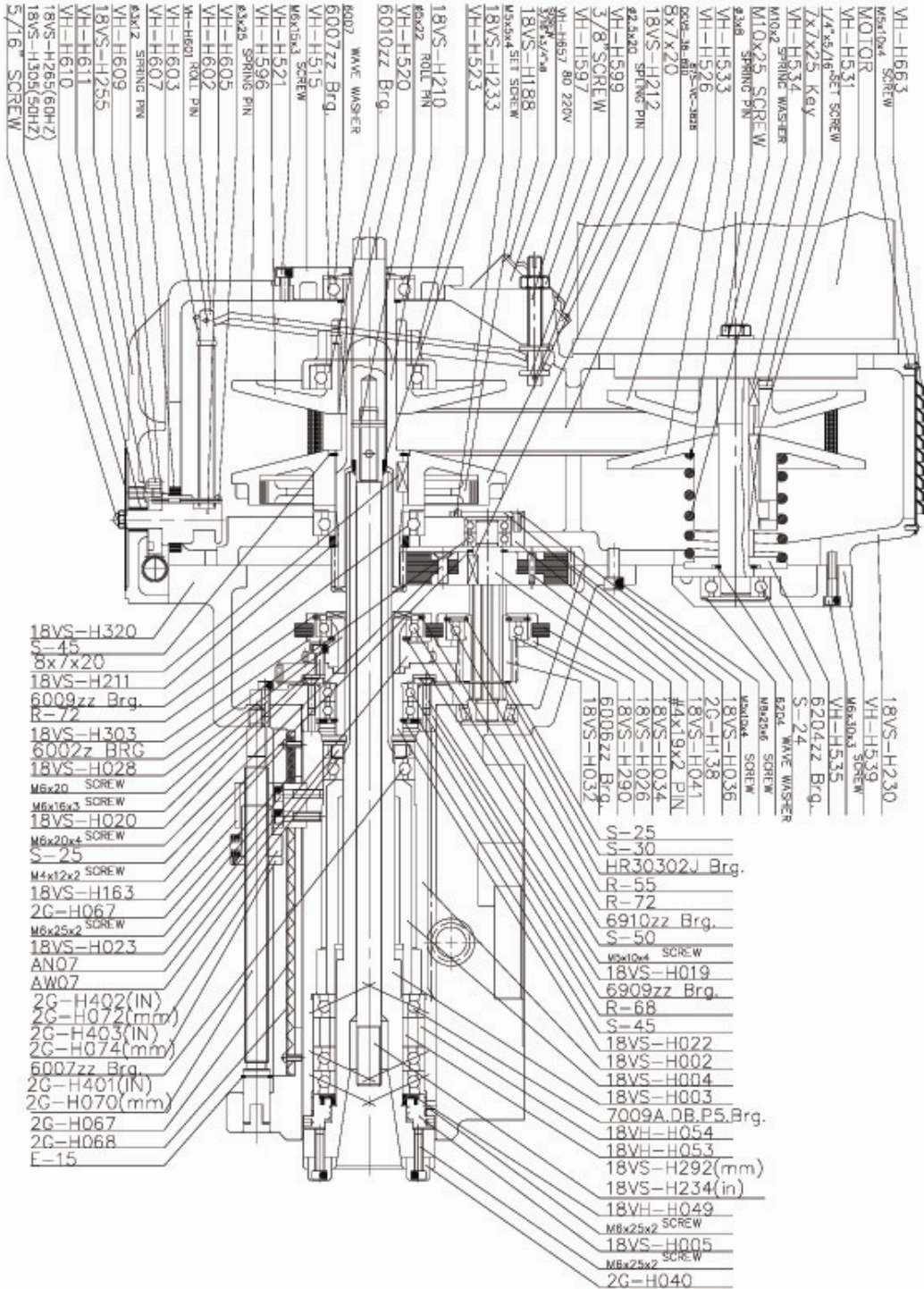
TEL : (310) 370-5990 FAX : (310) 542-6162

<http://www.sharp-industries.com>

PARTS NO	PC	DESCRIPTION	REMARKS
1	VH-H515	1	BEARING HOUSING
2	VH-H520	1	SLIDING KEY
3	VH-H521	1	ADJ DRIVEN VARI-DISC
4	VH-H523	1	BEARING BRACKET
5	VH-H526	1	MOTOR STATIONARY VARI-DISC
6	VH-H531	1	SLIDING KEY
7	VH-H533	1	ADJ MOTOR VARI-DISC
8	VH-H534	1	SPRING
9	VH-H535	1	SPRING-WASHER
10	VH-H539	1	BOTTOM BEARING CAP
11	VH-H596	1	SPEED CHANGE PLATE
12	VH-H597	1	SPEED CHANGE PLATE PIVOT STUD
13	VH-H599	1	WASHER
14	VH-H601	1	ROLL PIN
15	VH-H602	1	SPEED CHANGE CHAIN STUD
16	VH-H603	1	CHAIN
17	VH-H605	1	SPEED CHANGE CHAIN DRUM
18	VH-H607	1	WORM GEAR SHAFT SUPPORTER
19	VH-H609	1	SPEED CHANGER WORM GEAR
20	VH-H610	1	BRONZE BUSHING
21	VH-H611	1	ORIENTATION SCREW
22	VH-H657	1	COVER
23	VH-H663	1	REAR COVER
24	18VH-H049	1	SPINDLE DUST SHIELD
25	18VH-H053	1	BEARING SPACER
26	18VH-H054	1	BEARING SPACER
27	18VS-H320	1	QUILL HOUSING
28	18VS-H002	1	QUILL
29	18VS-H003	1	SPINDLE
30	18VS-H004	1	BEARING SPACER
31	18VS-H005	1	NOSE PIECE
32	18VS-H019	1	BEARING BRACKET
33	18VS-H020	1	COVER
34	18VS-H022	1	SPINDLE GEAR
35	18VS-H023	1	SPINDLE FEED GEAR



PARTS NO	PC	DESCRIPTION	REMARKS	
1	18VS-H026	1	BACK GEAR SHIFTER FORK	
2	18VS-H028	1	SPINDLE CLUTCH	
3	18VS-H032	1	SPEED CHANGE GEAR	
4	18VS-H034	1	SPEED CHANGE GEAR SHAFT	
5	18VS-H036	1	BACK GEAR	
6	18VS-H041	1	BEARING BRACKET	
7	18VS-H163	1	QUILL STOP KNOB	
8	18VS-H188	1	BRAKE SHOE	
9	18VS-H210	1	SPINDLE PULLEY HUB	
10	18VS-H211	1	SPACER	
11	18VS-H212	1	STATIONARY DRIVEN VARI-DISC	
12	18VS-H230	1	BELT HOUSING	
13	18VS-H233	1	DRAWBAR WASHER	
14	18VS-H234	1	DRAWBAR	
15	18VS-H255	1	SPEED CHANGE HOUSING	
16	18VS-H265	1	VARI SPEED DIAL (60HZ)	
17	18VS-H290	1	BEARING BRACKET	
18	18VS-H292	1	DRAWBAR (mm)	
19	18VS-H303	1	BEARING BRACKET	
20	18VS-H305	1	VARI SPEED DIAL (50HZ)	
21	2G-H040	2	ARBOR DRIVER	
22	2G-H067	1	BELLOWS	
23	2G-H068	1	COVER FOR QUILL	
24	2G-H070	1	QUILL STOP MICRO SCREW (mm)	
25	2G-H072	1	MICROMETER NUT (mm)	
26	2G-H074	1	QUILL MICRO STOP NUT (mm)	
27	2G-H138	1	COVER	
28	2G-H401	1	QUILL STOP MICRO SCREW (IN)	
29	2G-H402	1	MICROMETER NUT (IN)	
30	2G-H403	1	QUILL MICRO STOP NUT (IN)	



PARTS NO	PC	DESCRIPTION	REMARKS
1	18VS-H320	1	QUILL HOUSING
2	18VS-H041	1	BEARING BRACKET
3	18VS-H045	1	SHIFTER FORK SHAFT
4	18VS-H046	1	SHIFTER CRANK
5	18VS-H047	1	COVER
6	18VS-H049	1	HI-LOW SPEED PLATE
7	18VS-H060	1	UP FEED WORM
8	18VS-H061	1	BEARING CUP
9	18VS-H065	1	BEARING CUP
10	18VS-H068	1	UP FEED DRIVING GEAR
11	18VS-H073	1	UP FEED DRIVING CRANK
12	18VS-H116	1	QUILL PINION SHAFT
13	18VS-H146	1	OVERLOAD CLUTCH TRIP LEVER
14	18VS-H155	1	TRIP PLUNGER
15	18VS-H156	1	TRIP PLUNGER HANDHOLD
16	18VS-H160	1	CLUSTER GEAR COVER
17	18VS-H163	1	QUILL STOP KNOB
18	18VS-H169	1	FLAT WASHER
19	18VS-H174	1	QUILL MOVING INDICATE PLATE
20	18VS-H179	1	QUILL LOCK SLEEVE
21	18VS-H180	1	QUILL LOCK SLEEVE
22	18VS-H181	1	QUILL LOCK BOLT
23	18VS-H183	1	MICROMETER SCALE (mm)
24	18VS-H274	4	T-BOLT
25	18VS-H275	2	SLEEVE
26	18VS-H276	4	WASHER
27	18VS-H283	1	FEED SPEED PLATE
28	2G-H033	2	GRIP
29	2G-H065	1	CHIP GUARD PLATE
30	2G-H070	1	QUILL STOP MICRO SCREW (mm)
31	2G-H072	1	MICROMETER NUT (mm)
32	2G-H074	1	QUILL MICRO STOP NUT (mm)
33	2G-H085	1	COMPRESSION SPRING
34	2G-H095	2	SPRING
35	2G-H100	2	ARROW HEAD PLATE

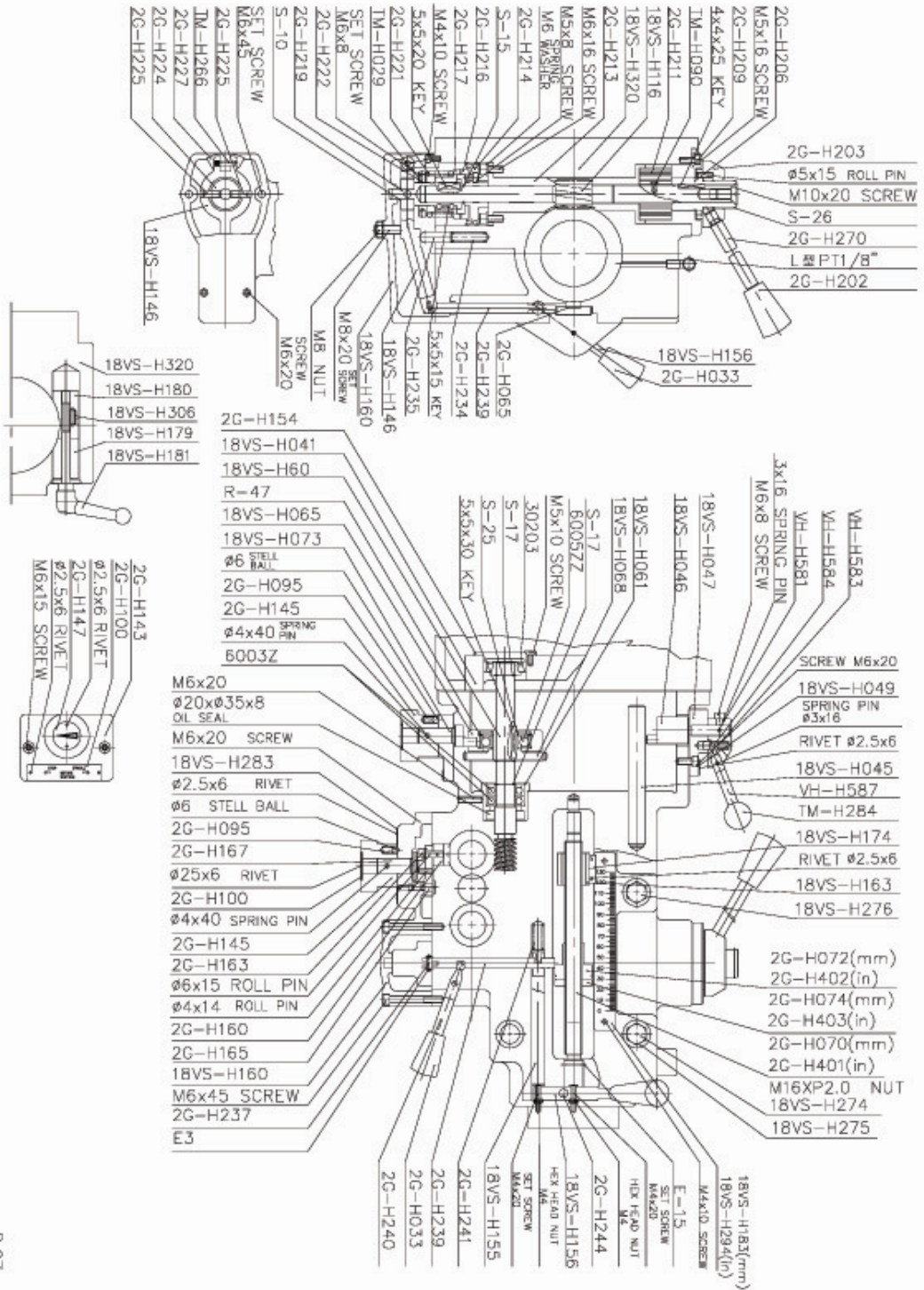


PARTS NO	PC	DESCRIPTION	REMARKS
36	2G-H143	1 COVER	
37	2G-H145	2 SHIFTER HANDWHEEL	
38	2G-H147	1 FEED PLATE	
39	2G-H154	1 BEARING COVER	
40	2G-H160	1 FEED GEAR SHIFTER FORK	
41	2G-H161	1 ROLL PIN	
42	2G-H163	1 SHIFTING CRANK	
43	2G-H165	1 CRANK STUD	
44	2G-H167	1 CLUSTER GEAR CRANK	
45	2G-H202	1 GRIP	
46	2G-H203	1 PINION SHAFT HUB & HANDLE	
47	2G-H206	1 PINION SHAFT HUB SLEEVE	
48	2G-H209	1 SPRING COVER	
49	2G-H211	1 CLOCK SPRING	
50	2G-H213	1 QUILL PINION SHAFT BUSHING	
51	2G-H214	1 WORM GEAR	
52	2G-H216	1 OVERLOAD CLUTCH RING	
53	2G-H217	1 OVERLOAD CLUTCH	
54	2G-H219	1 OVERLOAD CLUTCH SLEEVE	
55	2G-H221	1 SAFETY CLUTCH SPRING	
56	2G-H222	1 OVERLOAD CLUTCH LOCK NUT	
57	2G-H224	1 CLUTCH BRONZE RING	
58	2G-H225	1 TRIP LEVER SCREW	
59	2G-H227	1 OVERLOAD CLUTCH TRIP LEVER STRUT	
60	2G-H234	1 COMPRESSION SPRING	
61	2G-H235	1 SPRING PLUNGER	
62	2G-H237	1 ROLL PIN	
63	2G-H239	1 CAM ROD	
64	2G-H240	1 TRIP HANDLE	
65	2G-H241	1 COMPRESSION SPRING	
66	2G-H243	1 TRIP HANDLE	
67	2G-H244	1 TRIP PIN	
68	2G-H270	4 GRIP BOLT	
69	2G-H401	1 QUILL STOP MICRO SCREW (in)	
70	2G-H402	1 MICROMETER NUT (in)	

PARTS NO	PC	DESCRIPTION	REMARKS	
71	2G-H403	1	QUILL MICRO STOP NUT (in)	
72	TM-H029	2	SPINDLE LOCKNUT BINDING	
73	TM-H090	1	CLOCK SPRING STUD	
74	TM-H266	1	ROLL PIN	
75	TM-H284	1	ORIENTATION PIN	
76	VH-H581	1	SHIFTER CRANK HUB	
77	VH-H583	1	COMPRESSION SPRING	
78	VH-H584	1	ORIENTATION PIN	
79	VH-H587	1	SHIFTER HANDLE	
80	18VS-H283	1	FEED SPEED PLATE (in)	
81	18VS-H294	1	MICROMETER SCALE (in)	
82	18VS-H306	1	SPRING	

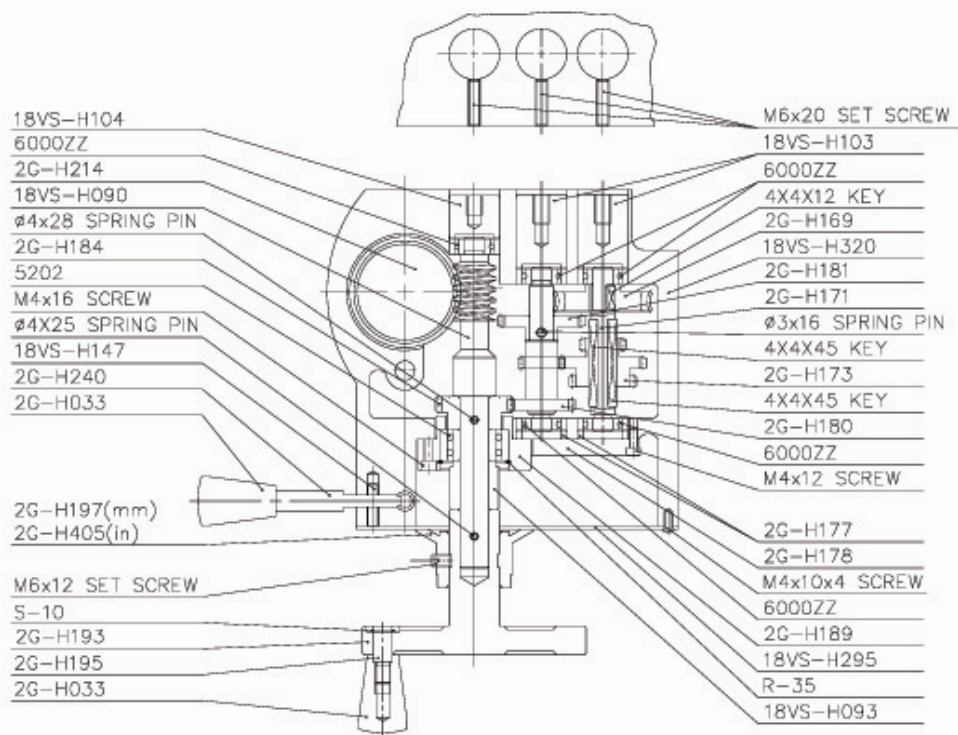


2180-7721-100



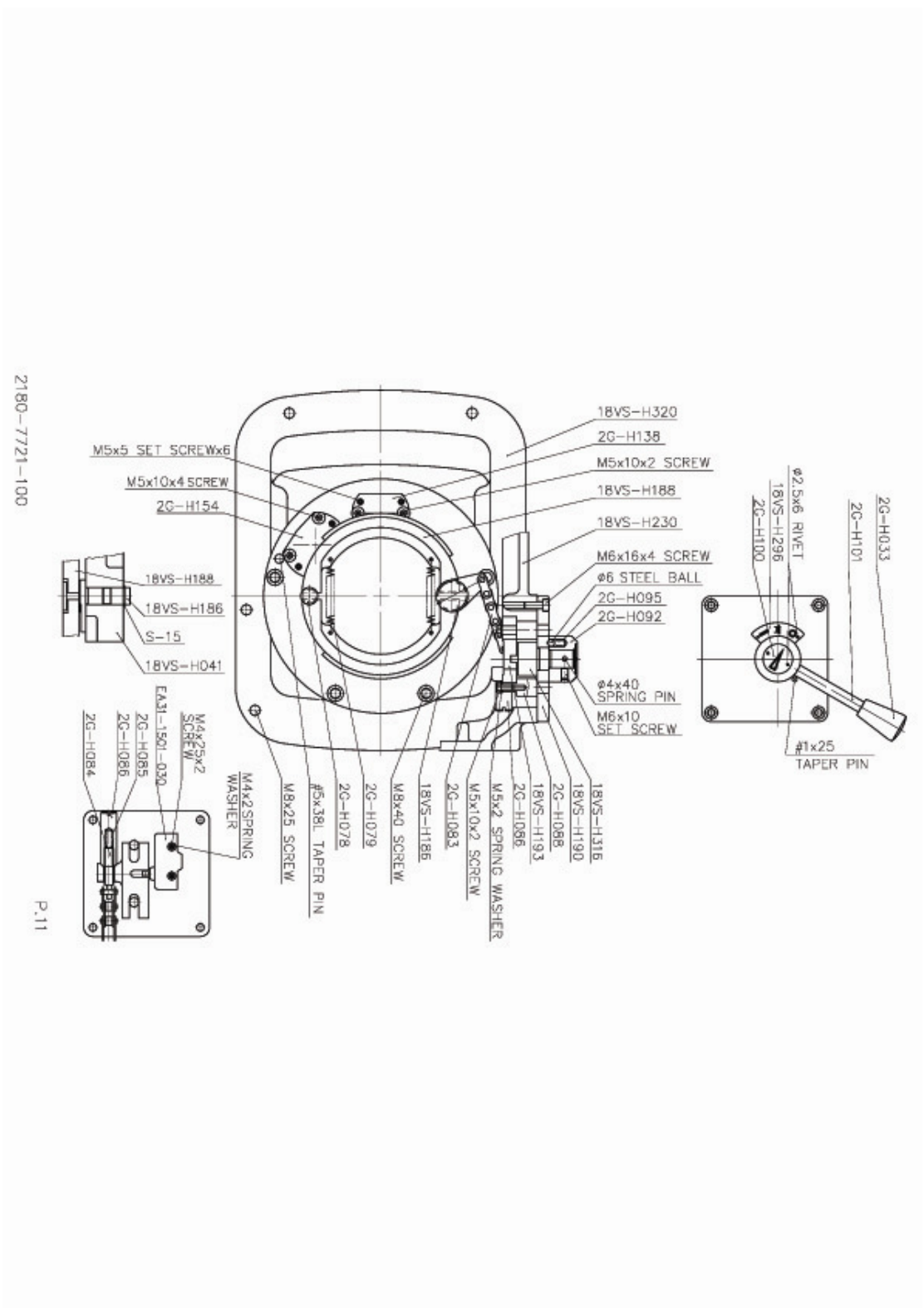
PARTS NO	PC	DESCRIPTION	REMARKS
1	18VS-H090	1 DOWN FEED WORM	
2	18VS-H093	1 BEARING SPACER	
3	18VS-H103	2 BEARING PLUNGER	
4	18VS-H104	1 BEARING PLUNGER	
5	18VS-H147	1 ROLL PIN	
6	18VS-H295	1 PLATE	
7	18VS-H320	1 QUILT HOUSING	
8	2G-H033	2 GRIP	
9	2G-H169	1 UP FEED WORM GEAR	
10	2G-H171	1 SPEED CHANGE GEAR CLUSTER SHAFT	
11	2G-H173	1 SPEED CHANGE CLUSTER	
12	2G-H177	2 BEARING SPACER	
13	2G-H178	1 BEARING COVER	
14	2G-H180	1 COUNTERSHAFT	
15	2G-H181	1 SINGLE-DRIVING GEAR	
16	2G-H184	1 DOWN FEED DRIVING GEAR	
17	2G-H189	1 BEARING BRACKET	
18	2G-H193	1 HANDWHEEL	
19	2G-H195	1 GRIP STUD	
20	2G-H197	1 DIAL (mm)	
21	2G-H214	1 WORM GEAR	
22	2G-H240	1 TRIP HANDLE	
23	2G-H405	1 DIAL (IN)	

2180-7721-100



P.09

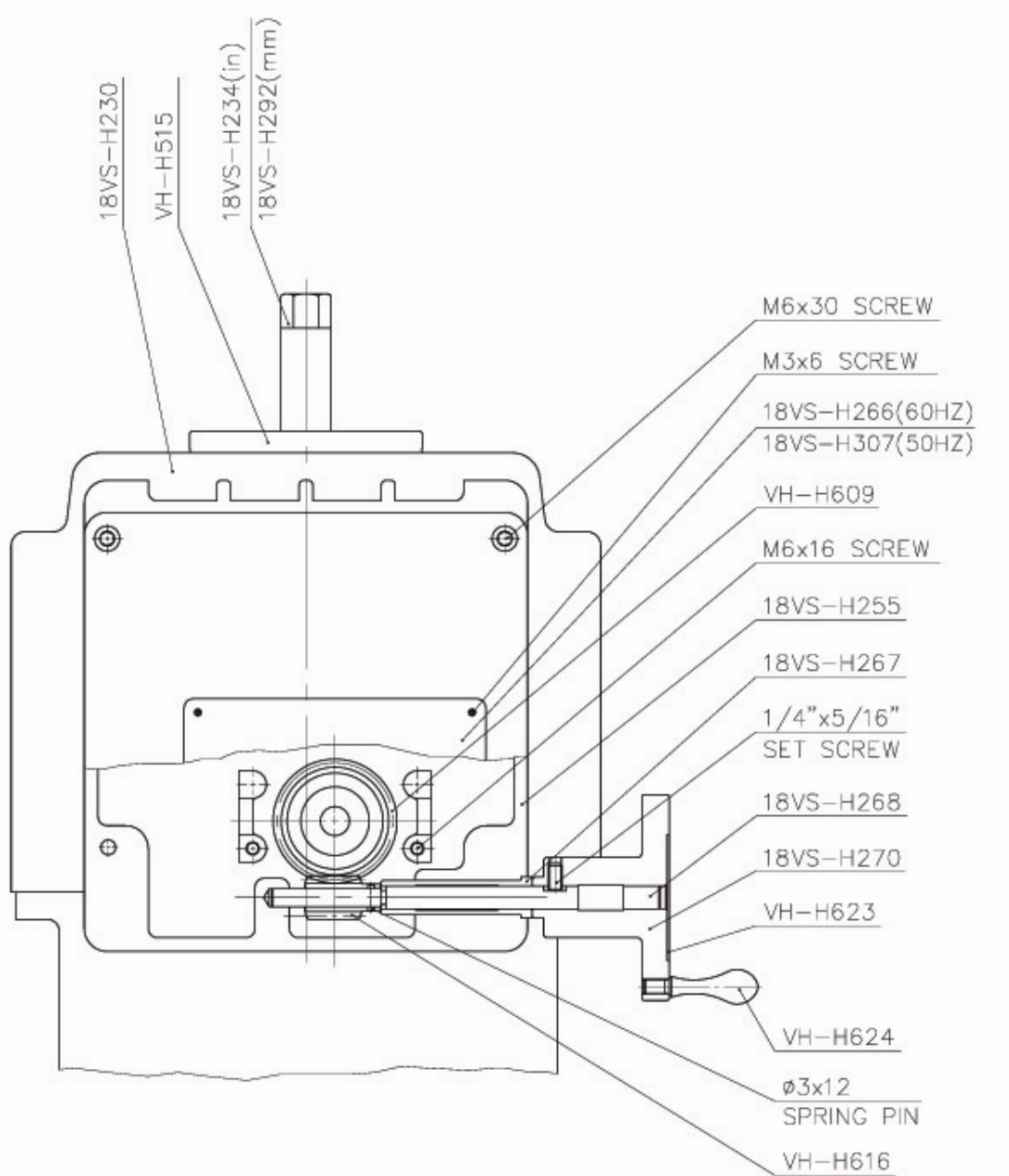
PARTS NO	PC	DESCRIPTION	REMARKS
1	18VS-H320	1	QUILL HOUSING
2	18VS-H041	1	BEARING BRACKET
3	18VS-H186	1	BRAKE LOCK STUD
4	18VS-H188	1	BRAKE SHOE
5	18VS-H190	1	LIMIT SWITCH HOLDER
6	18VS-H193	1	SHIFTER PLATE
7	18VS-H230	1	BELT HOUSING
8	18VS-H296	1	PLATE
9	18VS-H316	1	CRANK
10	2G-H033	1	GRIP
11	2G-H078	1	STRUT
12	2G-H079	2	TENSION SPRING
13	2G-H083	1	CHAIN
14	2G-H084	1	CHAIN PULLSTUD
15	2G-H085	1	COMPRESSION SPRING
16	2G-H086	1	PULLSTUD NUT
17	2G-H088	2	SHIFTER PLATE STRUT
18	2G-H092	1	CRANK HUB
19	2G-H095	1	COMPRESSION SPRING
20	2G-H100	1	ARROW HEAD PLATE
21	2G-H101	1	GRIP ROD
22	2G-H138	1	BEARING COVER
23	2G-H154	1	BEARING COVER
24			
25			
26			
27			
28			
29			
30			
31			
32			
33			
34			



2180-7721-100

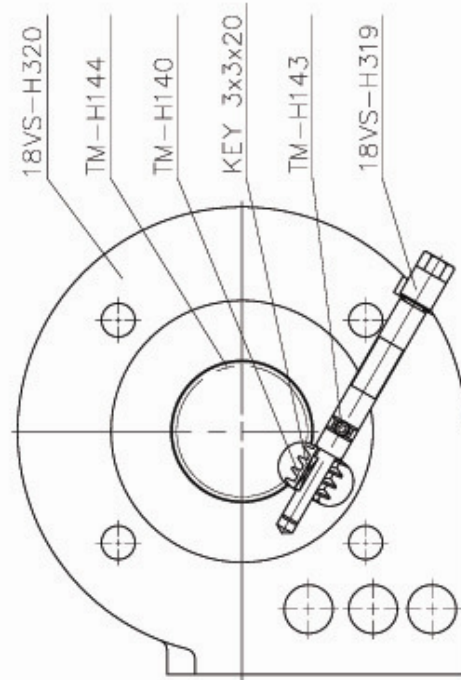
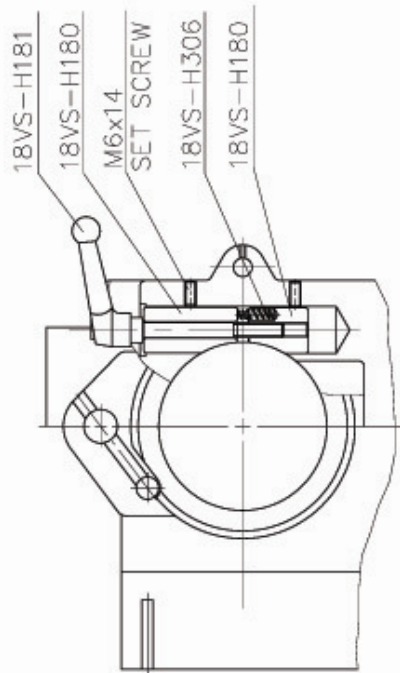








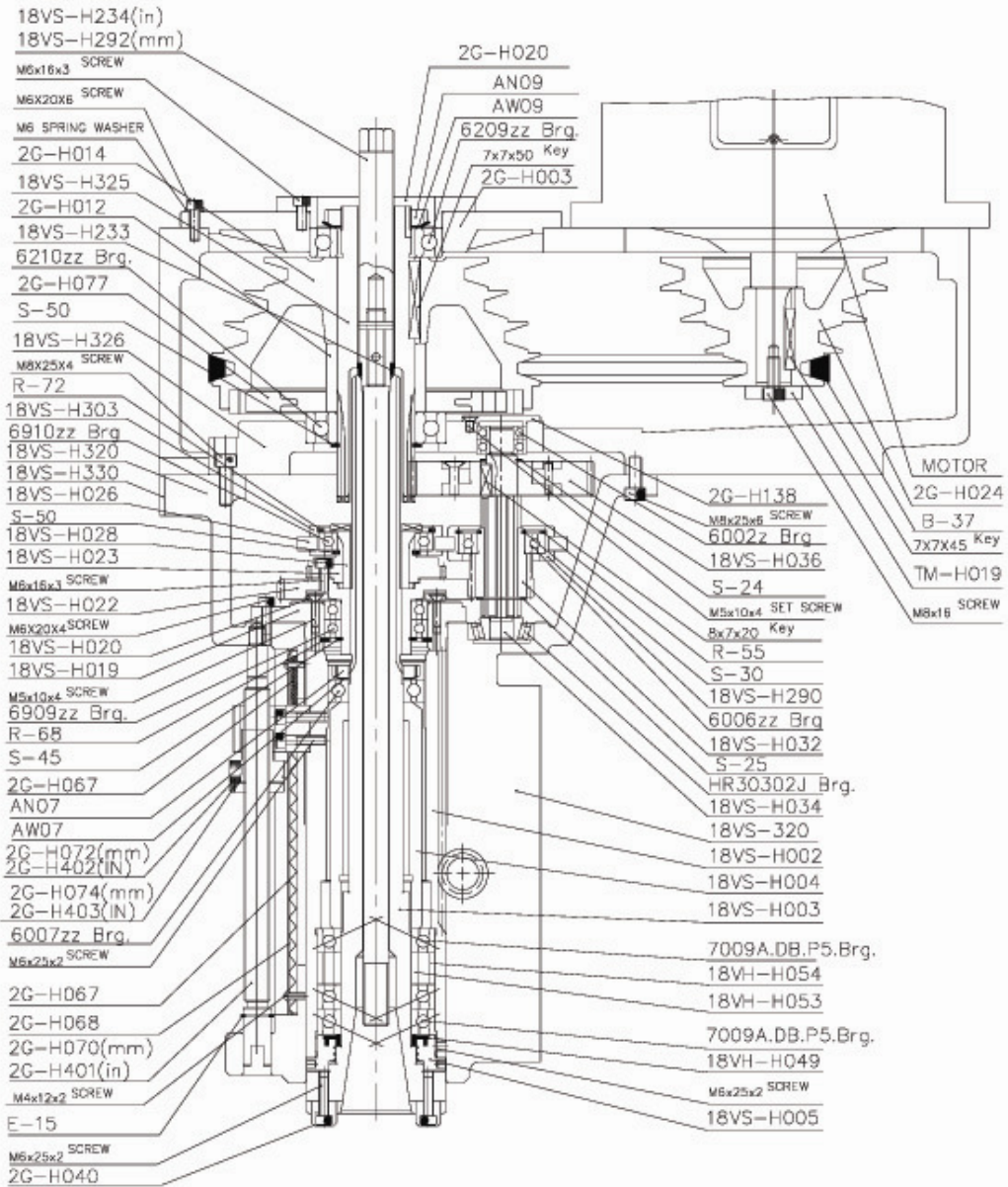
PARTS NO		PC	DESCRIPTION	REMARKS
1	18VS-H180	1	QUILL LOCK SLEEVE	
2	18VS-H181	1	QUILL LOCK BOLT	
3	18VS-H306	1	SPRING	
4	18VS-H319	1	WORM SHAFT	
5	18VS-H320	1	QUILL HOUSING	
6				
7	TM-H140	1	WORM GEAR	
8	TM-H143	1	SOCKET SET SCREW	
9	TM-H144	1	GEAR	



PARTS NO	PC	DESCRIPTION	REMARKS
1	18VS-H002	1	QUILL
2	18VS-H003	1	SPINDLE
3	18VS-H004	1	BEARING SPACER
4	18VS-H005	1	NOSE PIECE
5	18VS-H019	1	BEARING BRACKET
6	18VS-H020	1	COVER
7	18VS-H022	1	SPINDLE GEAR
8	18VS-H023	1	SPINDLE FEED GEAR
9	18VS-H026	1	BACK GEAR SHIFTER FORK
10	18VS-H028	1	SPINDLE CLUTCH
11	18VS-H032	1	SPEED CHANGE GEAR
12	18VS-H034	1	SPEED CHANGE GEAR SHAFT
13	18VS-H036	1	BACK GEAR
14	18VS-H234	1	DRAWBAR (IN)
15	18VS-H233	1	DRAWBAR WASHER
16	18VS-H290	1	BEARING BRACKET
17	18VS-H292	1	DRAWBAR (mm)
18	18VS-H303	1	BEARING BRACKET
19	18VS-H320	1	QUILL HOUSING
20	18VS-H325	1	SPINDLE PULLEY HUB
21	18VS-H326	1	BEARING COVER
22	18VS-H330	1	PLATE
23			
24	18VH-H049	1	SPINDLE DUST SHIELD
25	18VH-H053	1	BEARING SPACER
26	18VH-H054	1	BEARING SPACER
27			
28	TM-H019	1	MOTOR WASHER
29			
30			
31			
32			
33			
34			
35			



PARTS NO	PC	DESCRIPTION	REMARKS
1	2G-H003	1	BELT HOUSING COVER
2	2G-H012	1	BEARING SPACER
3	2G-H014	1	SPINDLE PULLEY
4	2G-H020	1	BEARING COVER
5	2G-H024	1	MOTOR PULLEY
6	2G-H040	2	ARBOR DRIVER
7	2G-H067	2	BELLOWS
8	2G-H068	1	COVER FOR QUILL
9	2G-H070	1	QUILL STOP MICRO SCREW (mm)
10	2G-H072	1	MICRO METER NUT (mm)
11	2G-H074	1	QUILL MICRO STOP SCREW (mm)
12	2G-H077	1	BRAKE BLOCK
13	2G-H138	1	BEARING COVER
14	2G-H401	1	QUILL STOP MICRO SCREW (IN)
15	2G-H402	1	MICRO METER NUT (IN)
16	2G-H403	1	QUILL MICRO STOP SCREW (IN)
17			
18			
19			
20			
21			
22			
23			
24			
25			
26			
27			



PARTS NO	PC	DESCRIPTION	REMARKS
1	2G-H002	1	BEARING BRACKET
2	2G-H004	1	BELT HOUSING
3	2G-H029	2	BOLT
4	2G-H031	2	SPECIAL NUT
5	2G-H032	3	GRIP BOLT
6	2G-H033	4	GRIP
7	2G-H077	1	BRAKE BLOCK
8	2G-H078	1	STRUT
9	2G-H079	2	TENSION SPRING
10	2G-H081	1	BRAKE LOCK STOP
11	2G-H084	1	CHAIN PULLSTUD
12	2G-H085	1	COMPRESSION SPRING
13	2G-H086	1	PULLSTUD NUT
14	2G-H087	1	SHIFTER PLATE STRUT
15	2G-H088	2	SHIFTER PLATE STRUT
16	2G-H091	1	CRANK
17	2G-H092	1	CRANK HUB
18	2G-H095	1	COMPRESSION SPRING
19	2G-H097	1	LIMIT SWITCH HOLDER
20	2G-H100	1	ARROW HEAD PLATE
21	2G-H101	1	HANDLE
22	2G-H103	1	PLATE
23	2G-H104	1	LIMIT SWITCH
24	2G-H108	1	BELT HOUSING COVER
25	2G-H114	1	VARI SPEED PLATE
26	2G-H138	1	BEARING COVER
27	2G-H154	1	BEARING COVER
28			
29			
30	18VS-H331	1	CHAIN
31			
32			
33			
34			

2180-7721-100

